

## Product datasheet for **TA504344S**

### **JAB1 (COPS5) Mouse Monoclonal Antibody [Clone ID: OTI2B12]**

#### **Product data:**

Product Type:	Primary Antibodies
Clone Name:	OTI2B12
Applications:	IF, IHC, WB
Recommended Dilution:	WB 1:2000, IHC 1:150, IF 1:100
Reactivity:	Human, Mouse, Rat
Host:	Mouse
Isotype:	IgG1
Clonality:	Monoclonal
Immunogen:	Full length human recombinant protein of human COPS5(NP_006828) produced in HEK293T cell.
Formulation:	PBS (pH 7.3) containing 1% BSA, 50% glycerol and 0.02% sodium azide.
Concentration:	0.76 mg/ml
Purification:	Purified from mouse ascites fluids or tissue culture supernatant by affinity chromatography (protein A/G)
Conjugation:	Unconjugated
Storage:	Store at -20°C as received.
Stability:	Stable for 12 months from date of receipt.
Predicted Protein Size:	37.4 kDa
Gene Name:	COP9 signalosome subunit 5
Database Link:	<a href="#">NP_006828</a> <a href="#">Entrez Gene 26754 Mouse</a> <a href="#">Entrez Gene 312916 Rat</a> <a href="#">Entrez Gene 10987 Human</a> <a href="#">Q92905</a>



[View online »](#)

**Background:**

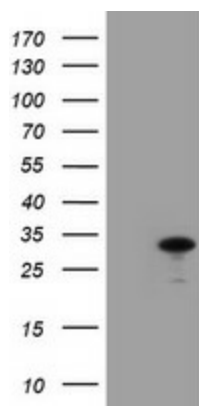
The protein encoded by this gene is one of the eight subunits of COP9 signalosome, a highly conserved protein complex that functions as an important regulator in multiple signaling pathways. The structure and function of COP9 signalosome is similar to that of the 19S regulatory particle of 26S proteasome. COP9 signalosome has been shown to interact with SCF-type E3 ubiquitin ligases and act as a positive regulator of E3 ubiquitin ligases. This protein is reported to be involved in the degradation of cyclin-dependent kinase inhibitor CDKN1B/p27Kip1. It is also known to be an coactivator that increases the specificity of JUN/AP1 transcription factors. [provided by RefSeq]

**Synonyms:**

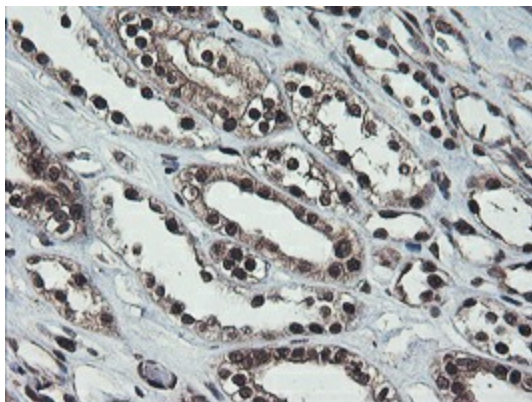
CSN5; JAB1; MOV-34; SGN5

**Protein Families:**

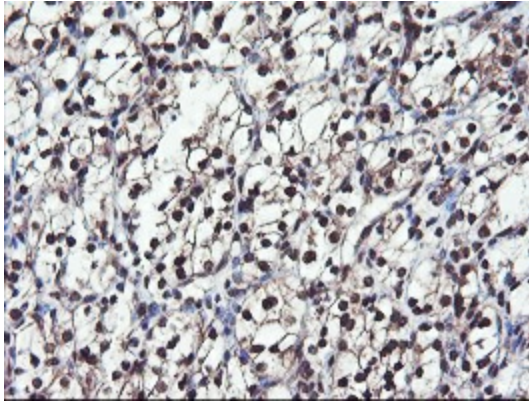
Druggable Genome, Protease, Transcription Factors

**Product images:**


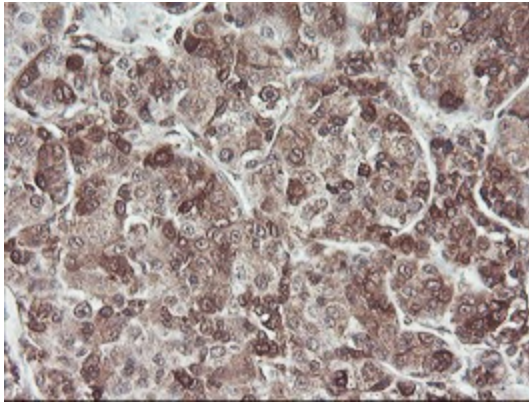
HEK293T cells were transfected with the pCMV6-ENTRY control (Cat# [PS100001], Left lane) or pCMV6-ENTRY COPS5 (Cat# [RC200979], Right lane) cDNA for 48 hrs and lysed. Equivalent amounts of cell lysates (5 ug per lane) were separated by SDS-PAGE and immunoblotted with anti-COPS5 (Cat# [TA504344]). Positive lysates [LY416392] (100ug) and [LC416392] (20ug) can be purchased separately from OriGene.



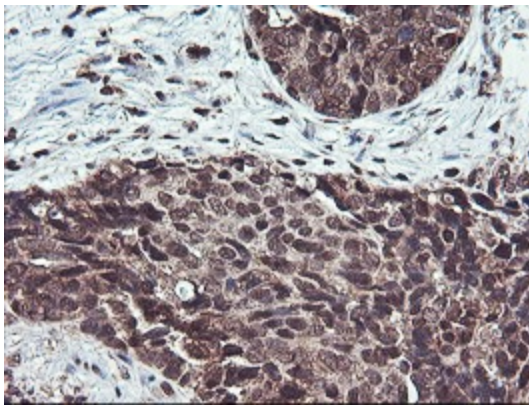
Immunohistochemical staining of paraffin-embedded Human Kidney tissue within the normal limits using anti-COPS5 mouse monoclonal antibody. (Heat-induced epitope retrieval by 10mM citric buffer, pH6.0, 100°C for 10min, [TA504344])



Immunohistochemical staining of paraffin-embedded Carcinoma of Human kidney tissue using anti-COPS5 mouse monoclonal antibody. (Heat-induced epitope retrieval by 10mM citric buffer, pH6.0, 100°C for 10min, [TA504344])

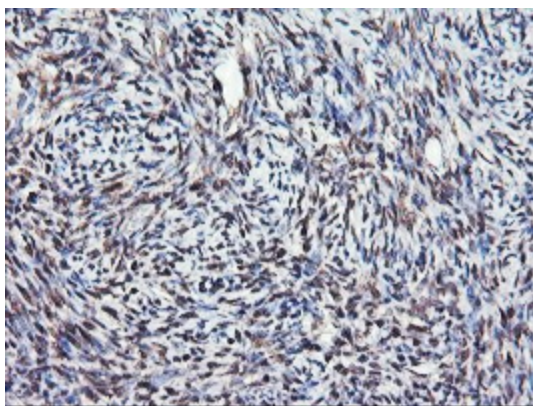


Immunohistochemical staining of paraffin-embedded Carcinoma of Human liver tissue using anti-COPS5 mouse monoclonal antibody. (Heat-induced epitope retrieval by 10mM citric buffer, pH6.0, 100°C for 10min, [TA504344])

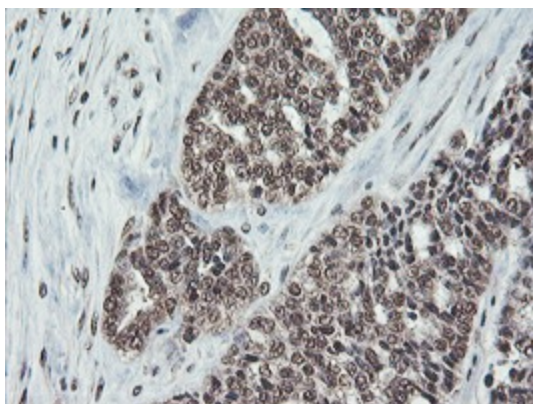


Immunohistochemical staining of paraffin-embedded Carcinoma of Human lung tissue using anti-COPS5 mouse monoclonal antibody. (Heat-induced epitope retrieval by 10mM citric buffer, pH6.0, 100°C for 10min, [TA504344])

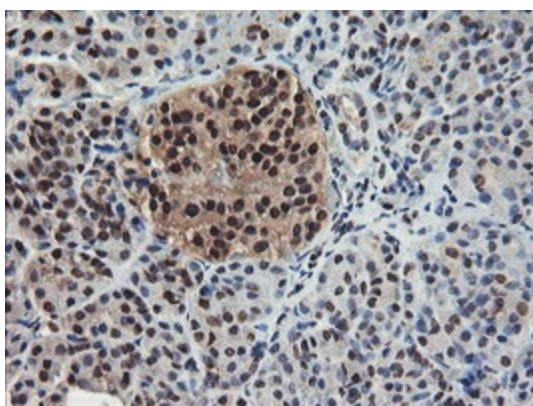




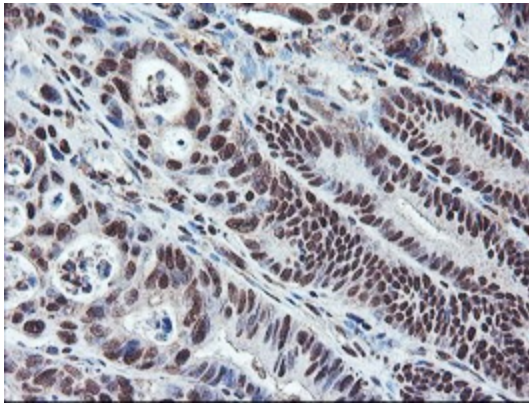
Immunohistochemical staining of paraffin-embedded Human Ovary tissue within the normal limits using anti-COPS5 mouse monoclonal antibody. (Heat-induced epitope retrieval by 10mM citric buffer, pH6.0, 100°C for 10min, [TA504344])



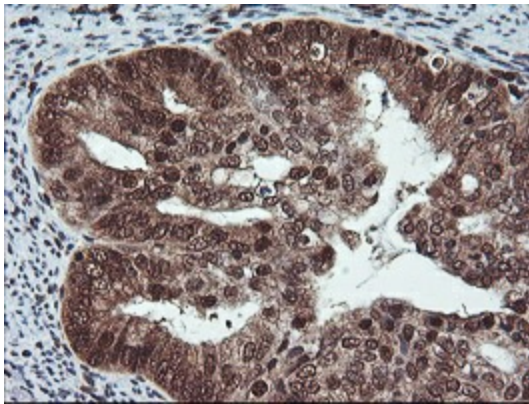
Immunohistochemical staining of paraffin-embedded Adenocarcinoma of Human ovary tissue using anti-COPS5 mouse monoclonal antibody. (Heat-induced epitope retrieval by 10mM citric buffer, pH6.0, 100°C for 10min, [TA504344])



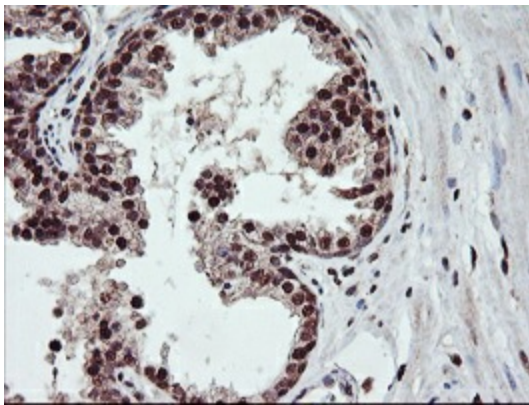
Immunohistochemical staining of paraffin-embedded Human pancreas tissue within the normal limits using anti-COPS5 mouse monoclonal antibody. (Heat-induced epitope retrieval by 10mM citric buffer, pH6.0, 100°C for 10min, [TA504344])



Immunohistochemical staining of paraffin-embedded Carcinoma of Human pancreas tissue using anti-COPS5 mouse monoclonal antibody. (Heat-induced epitope retrieval by 10mM citric buffer, pH6.0, 100°C for 10min, [TA504344])

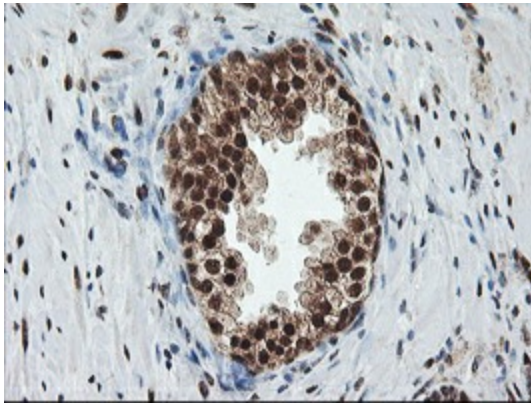


Immunohistochemical staining of paraffin-embedded Adenocarcinoma of Human endometrium tissue using anti-COPS5 mouse monoclonal antibody. (Heat-induced epitope retrieval by 10mM citric buffer, pH6.0, 100°C for 10min, [TA504344])

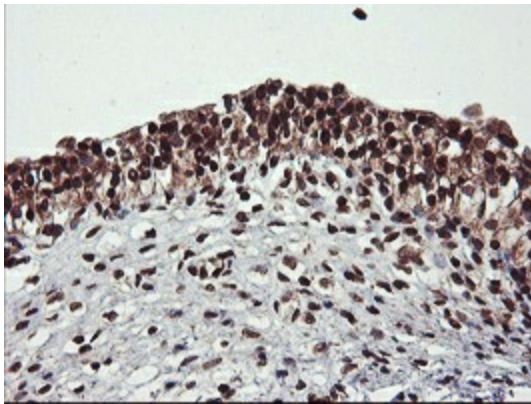


Immunohistochemical staining of paraffin-embedded Human prostate tissue within the normal limits using anti-COPS5 mouse monoclonal antibody. (Heat-induced epitope retrieval by 10mM citric buffer, pH6.0, 100°C for 10min, [TA504344])

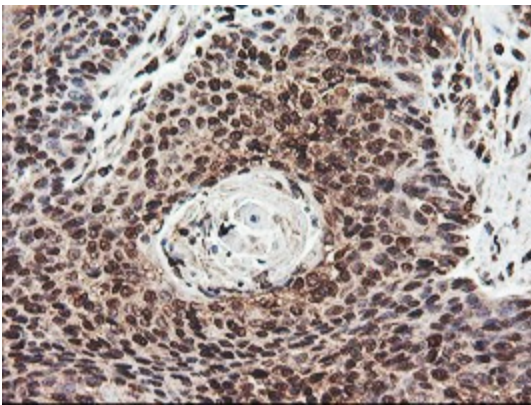




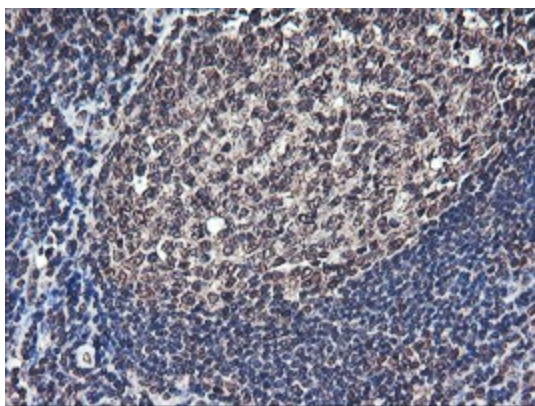
Immunohistochemical staining of paraffin-embedded Carcinoma of Human prostate tissue using anti-COPS5 mouse monoclonal antibody. (Heat-induced epitope retrieval by 10mM citric buffer, pH6.0, 100°C for 10min, [TA504344])



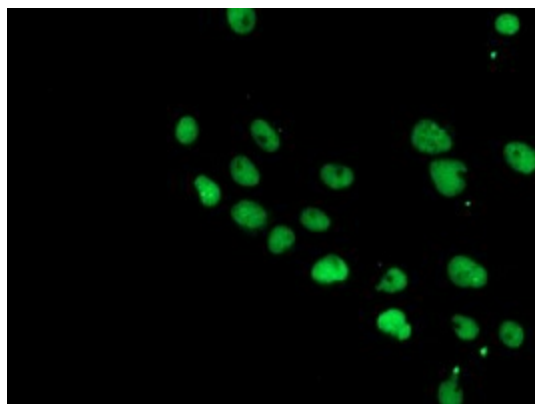
Immunohistochemical staining of paraffin-embedded Human bladder tissue within the normal limits using anti-COPS5 mouse monoclonal antibody. (Heat-induced epitope retrieval by 10mM citric buffer, pH6.0, 100°C for 10min, [TA504344])



Immunohistochemical staining of paraffin-embedded Carcinoma of Human bladder tissue using anti-COPS5 mouse monoclonal antibody. (Heat-induced epitope retrieval by 10mM citric buffer, pH6.0, 100°C for 10min, [TA504344])



Immunohistochemical staining of paraffin-embedded Human tonsil within the normal limits using anti-COPS5 mouse monoclonal antibody. (Heat-induced epitope retrieval by 10mM citric buffer, pH6.0, 100°C for 10min, [TA504344])



Anti-COPS5 mouse monoclonal antibody ([TA504344]) immunofluorescent staining of COS7 cells transiently transfected by pCMV6-ENTRY COPS5 ([RC200979]).