

## Product datasheet for **TA504329S**

### CAMLG Mouse Monoclonal Antibody [Clone ID: OTI1A3]

#### Product data:

|                         |   |
|-------------------------|---|
| Product Type:           | Primary Antibodies  |
| Clone Name:             | OTI1A3  |
| Applications:           | FC, IF, IHC, WB   |
| Recommended Dilution:   | WB 1:2000, IHC 1:150, IF 1:100, FLOW 1:100  |
| Reactivity:             | Human, Mouse, Rat   |
| Host:                   | Mouse   |
| Isotype:                | IgG1  |
| Clonality:              | Monoclonal  |
| Immunogen:              | Full length human recombinant protein of human CAMLG(NP_001736) produced in HEK293T cell.                 |
| Formulation:            | PBS (pH 7.3) containing 1% BSA, 50% glycerol and 0.02% sodium azide.                                      |
| Concentration:          | 0.58 mg/ml  |
| Purification:           | Purified from mouse ascites fluids or tissue culture supernatant by affinity chromatography (protein A/G) |
| Conjugation:            | Unconjugated  |
| Storage:                | Store at -20°C as received.   |
| Stability:              | Stable for 12 months from date of receipt.  |
| Predicted Protein Size: | 32.8 kDa  |
| Gene Name:              | calcium modulating ligand   |
| Database Link:          | <a href="#">NP_001736</a><br><a href="#">Entrez Gene 819 Human</a><br><a href="#">P49069</a>              |



[View online »](#)

**Background:**

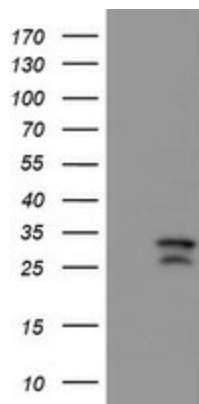
The immunosuppressant drug cyclosporin A blocks a calcium-dependent signal from the T-cell receptor (TCR) that normally leads to T-cell activation. When bound to cyclophilin B, cyclosporin A binds and inactivates the key signaling intermediate calcineurin. The protein encoded by this gene functions similarly to cyclosporin A, binding to cyclophilin B and acting downstream of the TCR and upstream of calcineurin by causing an influx of calcium. This integral membrane protein appears to be a new participant in the calcium signal transduction pathway, implicating cyclophilin B in calcium signaling, even in the absence of cyclosporin. [provided by RefSeq]

**Synonyms:**

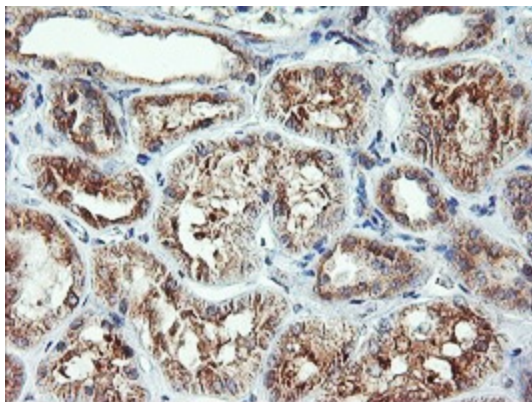
CAML

**Protein Families:**

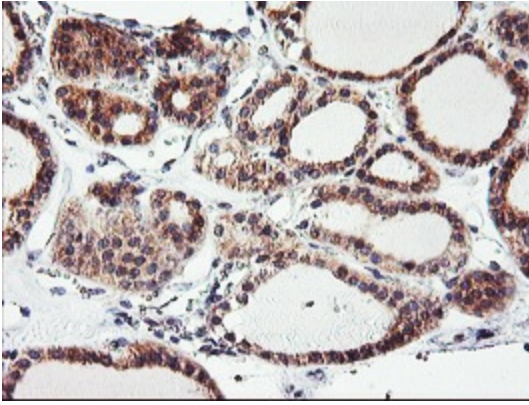
Druggable Genome

**Product images:**

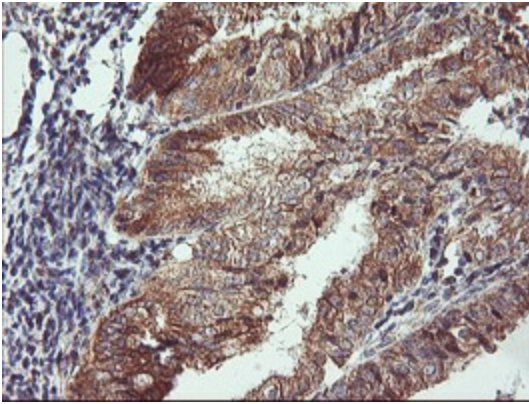
HEK293T cells were transfected with the pCMV6-ENTRY control (Cat# [PS100001], Left lane) or pCMV6-ENTRY CAMLG (Cat# [RC218292], Right lane) cDNA for 48 hrs and lysed. Equivalent amounts of cell lysates (5 ug per lane) were separated by SDS-PAGE and immunoblotted with anti-CAMLG (Cat# [TA504329]). Positive lysates [LY419768] (100ug) and [LC419768] (20ug) can be purchased separately from OriGene.



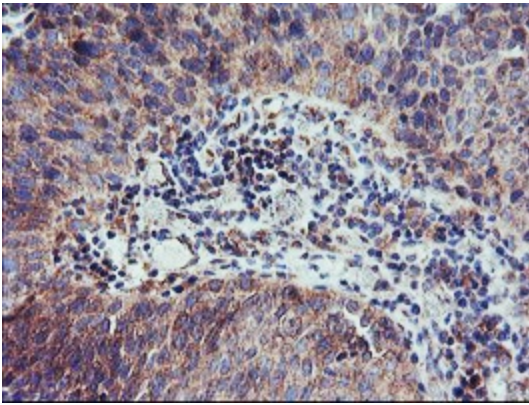
Immunohistochemical staining of paraffin-embedded Human Kidney tissue within the normal limits using anti-CAMLG mouse monoclonal antibody. (Heat-induced epitope retrieval by 10mM citric buffer, pH6.0, 100°C for 10min, [TA504329])



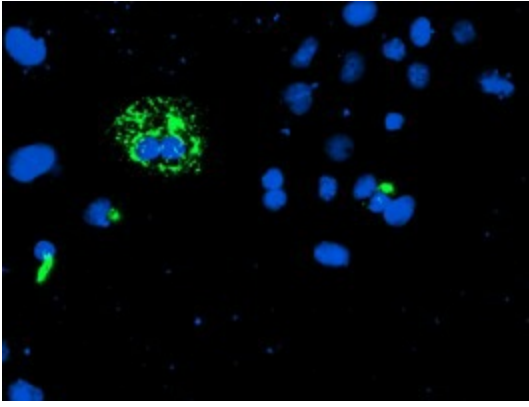
Immunohistochemical staining of paraffin-embedded Carcinoma of Human thyroid tissue using anti-CAMLG mouse monoclonal antibody. (Heat-induced epitope retrieval by 10mM citric buffer, pH6.0, 100°C for 10min, [TA504329])



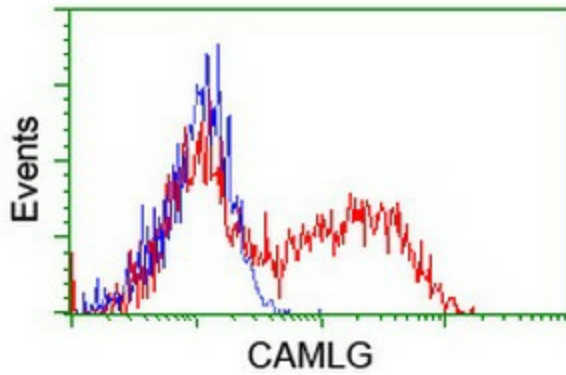
Immunohistochemical staining of paraffin-embedded Adenocarcinoma of Human endometrium tissue using anti-CAMLG mouse monoclonal antibody. (Heat-induced epitope retrieval by 10mM citric buffer, pH6.0, 100°C for 10min, [TA504329])



Immunohistochemical staining of paraffin-embedded Carcinoma of Human bladder tissue using anti-CAMLG mouse monoclonal antibody. (Heat-induced epitope retrieval by 10mM citric buffer, pH6.0, 100°C for 10min, [TA504329])



Anti-CAMLG mouse monoclonal antibody ([TA504329]) immunofluorescent staining of COS7 cells transiently transfected by pCMV6-ENTRY CAMLG ([RC218292]).



HEK293T cells transfected with either [RC218292] overexpress plasmid (Red) or empty vector control plasmid (Blue) were immunostained by anti-CAMLG antibody ([TA504329]), and then analyzed by flow cytometry.