

## Product datasheet for **TA504328**

### Cytochrome P450 2B6 (CYP2B6) Mouse Monoclonal Antibody [Clone ID: OTI3D5]

#### Product data:

Product Type:	Primary Antibodies
Clone Name:	OTI3D5
Applications:	FC, IF, IHC, WB
Recommended Dilution:	WB 1:500~2000, IHC 1:150, IF 1:100, FLOW 1:100
Reactivity:	Human, Dog, Rat, Monkey, Mouse
Host:	Mouse
Isotype:	IgG2a
Clonality:	Monoclonal
Immunogen:	Full length human recombinant protein of human CYP2B6(NP_000758) produced in HEK293T cell.
Formulation:	PBS (pH 7.3) containing 1% BSA, 50% glycerol and 0.02% sodium azide.
Concentration:	Lot dependent
Purification:	Purified from mouse ascites fluids or tissue culture supernatant by affinity chromatography (protein A/G)
Conjugation:	Unconjugated
Storage:	Store at -20°C as received.
Stability:	Stable for 12 months from date of receipt.
Predicted Protein Size:	56.1 kDa
Gene Name:	cytochrome P450 family 2 subfamily B member 6
Database Link:	<a href="#">NP_000758</a> <a href="#">Entrez Gene 474177 Dog</a> <a href="#">Entrez Gene 678687 Monkey</a> <a href="#">Entrez Gene 1555 Human</a> <a href="#">P20813</a>



[View online »](#)



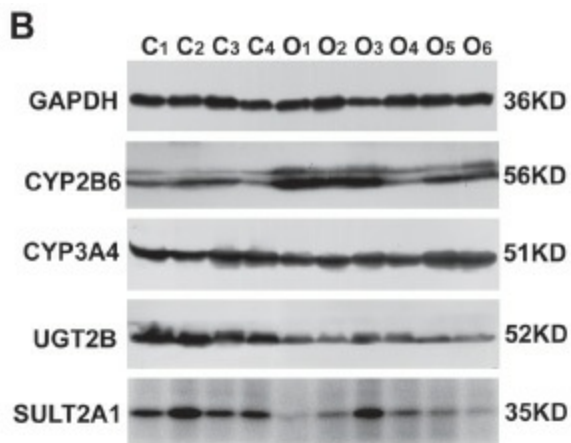
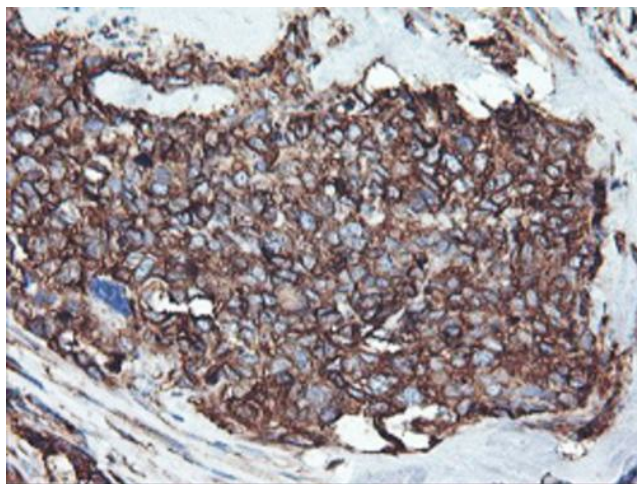
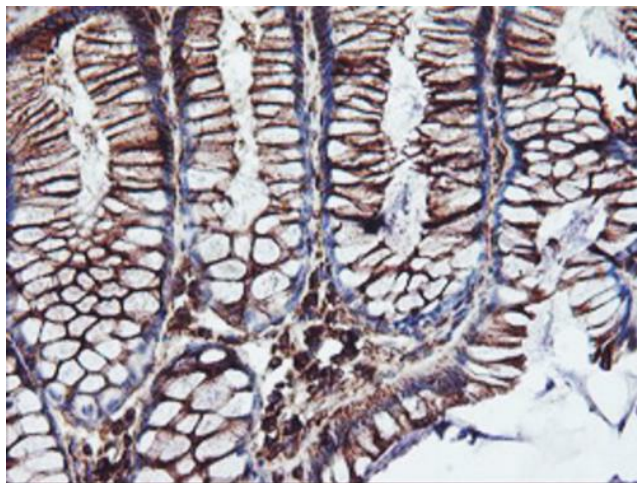


Figure from citation: Western blot analysis of CYP2B6 protein level by using anti-CYP2B6 antibody in liver samples of patients with obstructive cholestasis. Dilution: 1:2000 [View Citation](#)

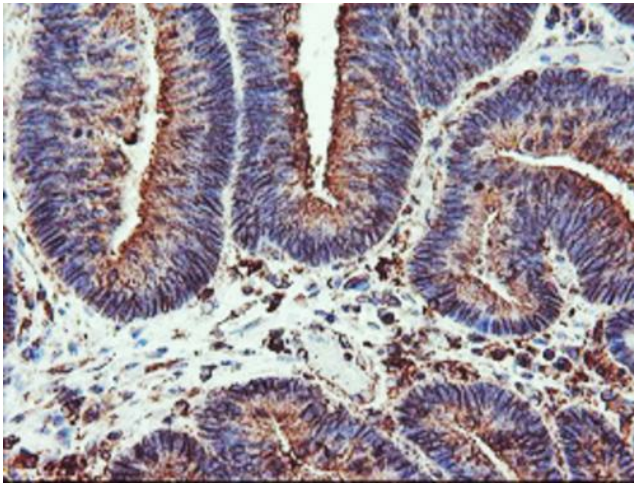


Immunohistochemical staining of paraffin-embedded Adenocarcinoma of Human breast tissue using anti-CYP2B6 mouse monoclonal antibody. Heat-induced epitope retrieval by EDTA solution buffer pH 8.0 at 120°C for 3 min.

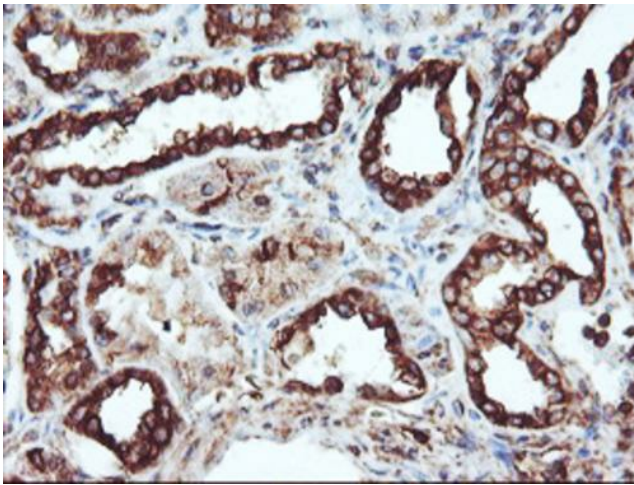


Immunohistochemical staining of paraffin-embedded Human colon tissue within the normal limits using anti-CYP2B6 mouse monoclonal antibody. Heat-induced epitope retrieval by EDTA solution buffer pH 8.0 at 120°C for 3 min.

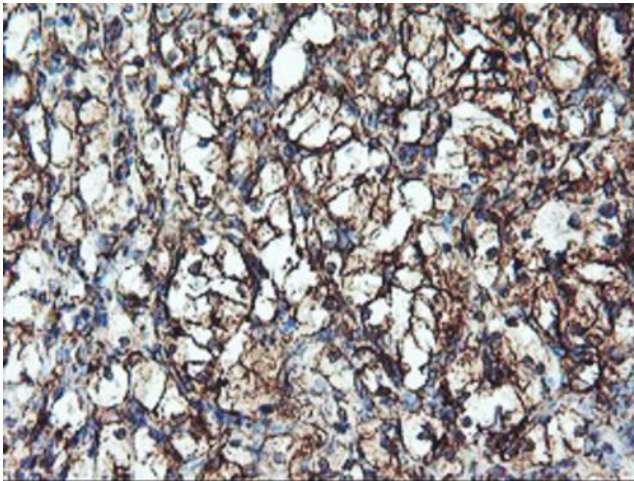




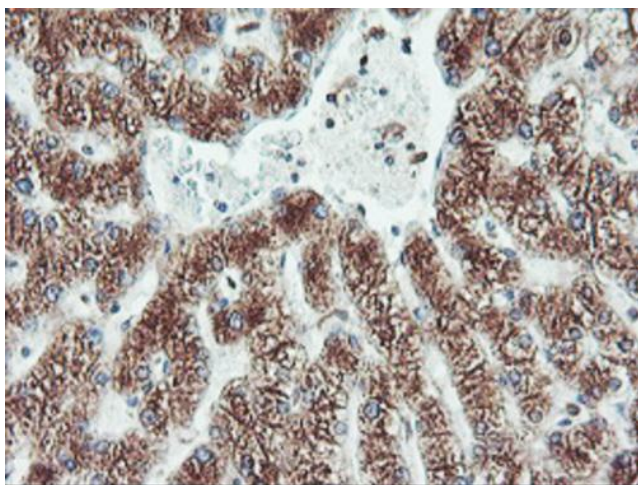
Immunohistochemical staining of paraffin-embedded Adenocarcinoma of Human colon tissue using anti-CYP2B6 mouse monoclonal antibody. Heat-induced epitope retrieval by EDTA solution buffer pH 8.0 at 120°C for 3 min.



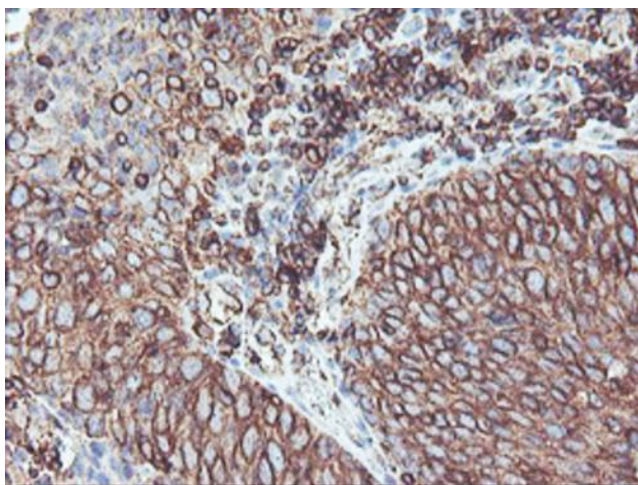
Immunohistochemical staining of paraffin-embedded Human Kidney tissue within the normal limits using anti-CYP2B6 mouse monoclonal antibody. Heat-induced epitope retrieval by EDTA solution buffer pH 8.0 at 120°C for 3 min.



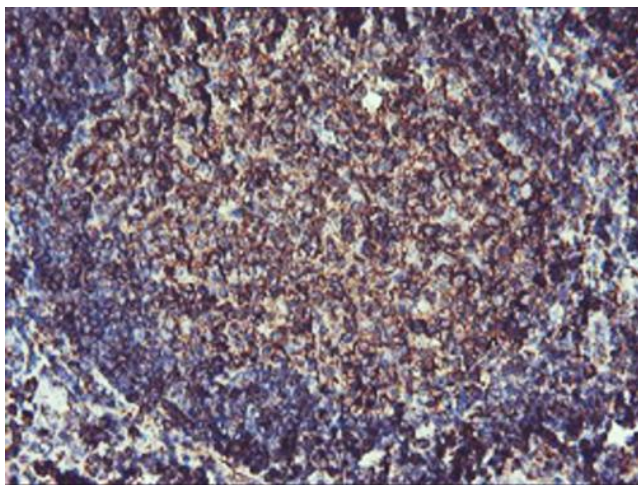
Immunohistochemical staining of paraffin-embedded Carcinoma of Human kidney tissue using anti-CYP2B6 mouse monoclonal antibody. Heat-induced epitope retrieval by EDTA solution buffer pH 8.0 at 120°C for 3 min.



Immunohistochemical staining of paraffin-embedded Human liver tissue within the normal limits using anti-CYP2B6 mouse monoclonal antibody. Heat-induced epitope retrieval by EDTA solution buffer pH 8.0 at 120°C for 3 min.

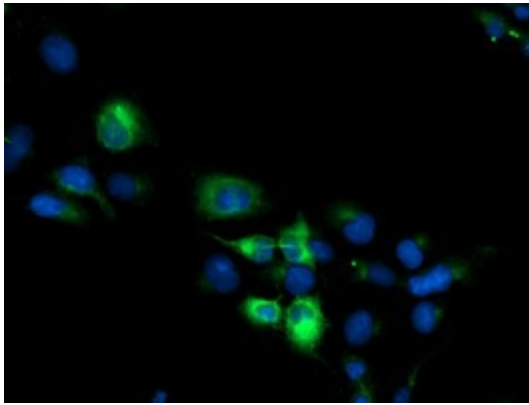


Immunohistochemical staining of paraffin-embedded Carcinoma of Human bladder tissue using anti-CYP2B6 mouse monoclonal antibody. Heat-induced epitope retrieval by EDTA solution buffer pH 8.0 at 120°C for 3 min.

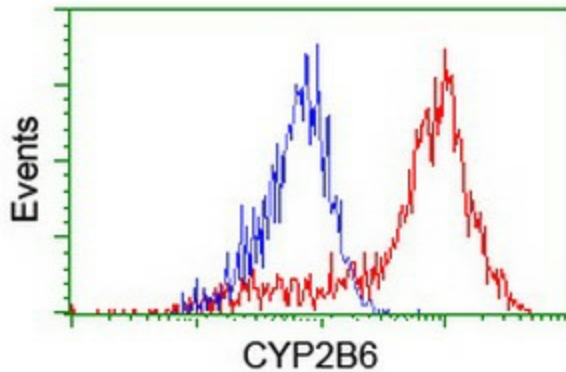


Immunohistochemical staining of paraffin-embedded Human tonsil within the normal limits using anti-CYP2B6 mouse monoclonal antibody. Heat-induced epitope retrieval by EDTA solution buffer pH 8.0 at 120°C for 3 min.

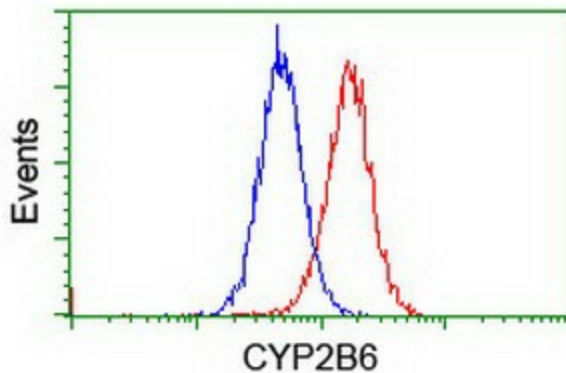




Anti-CYP2B6 mouse monoclonal antibody (TA504328) immunofluorescent staining of COS7 cells transiently transfected by pCMV6-ENTRY CYP2B6 ([RC217236]).



HEK293T cells transfected with either [RC217236] overexpress plasmid (Red) or empty vector control plasmid (Blue) were immunostained by anti-CYP2B6 antibody (TA504328), and then analyzed by flow cytometry.



Flow cytometric Analysis of Jurkat cells, using anti-CYP2B6 antibody (TA504328), (Red), compared to a nonspecific negative control antibody, (Blue).