

## Product datasheet for **TA504326M**

### Dystrobrevin beta (DTNB) Mouse Monoclonal Antibody [Clone ID: OTI3A12]

#### Product data:

Product Type:	Primary Antibodies
Clone Name:	OTI3A12
Applications:	FC, IF, IHC, WB
Recommended Dilution:	WB 1:2000, IHC 1:150, IF 1:100, FLOW 1:100
Reactivity:	Human, Mouse, Rat
Host:	Mouse
Isotype:	IgG1
Clonality:	Monoclonal
Immunogen:	Full length human recombinant protein of human DTNB(NP_899205) produced in HEK293T cell.
Formulation:	PBS (pH 7.3) containing 1% BSA, 50% glycerol and 0.02% sodium azide.
Concentration:	0.71 mg/ml
Purification:	Purified from mouse ascites fluids or tissue culture supernatant by affinity chromatography (protein A/G)
Conjugation:	Unconjugated
Storage:	Store at -20°C as received.
Stability:	Stable for 12 months from date of receipt.
Predicted Protein Size:	63.6 kDa
Gene Name:	dystrobrevin beta
Database Link:	<a href="#">NP_899205</a> <a href="#">Entrez Gene 13528 Mouse</a> <a href="#">Entrez Gene 362715 Rat</a> <a href="#">Entrez Gene 1838 Human</a> <a href="#">O60941</a>



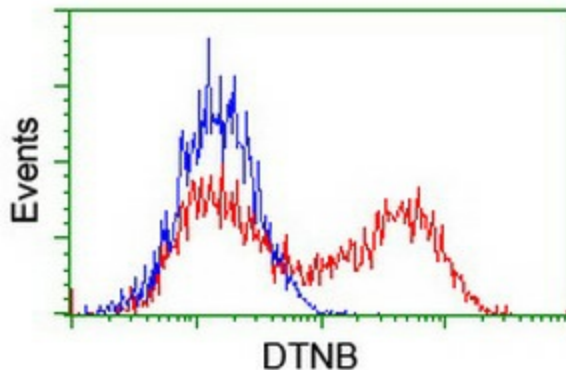
[View online »](#)

**Background:**

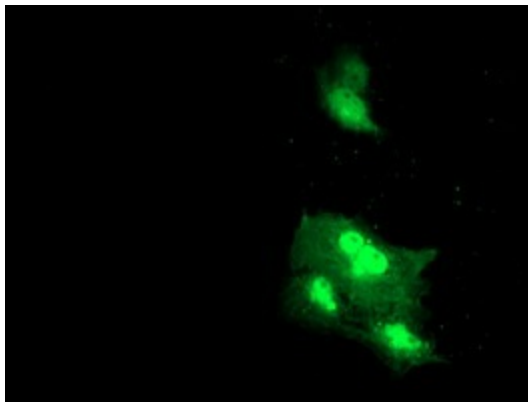
This gene encodes dystrobrevin beta, a component of the dystrophin-associated protein complex (DPC). The DPC consists of dystrophin and several integral and peripheral membrane proteins, including dystroglycans, sarcoglycans, syntrophins and dystrobrevin alpha and beta. The DPC localizes to the sarcolemma and its disruption is associated with various forms of muscular dystrophy. Dystrobrevin beta is thought to interact with syntrophin and the DP71 short form of dystrophin. Alternatively spliced transcript variants encoding different isoforms have been identified. [provided by RefSeq]

**Synonyms:**

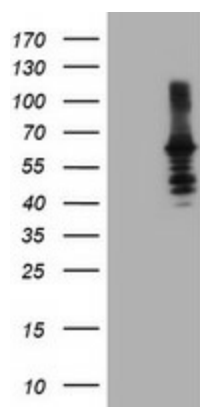
MGC17163; MGC57126

**Product images:**


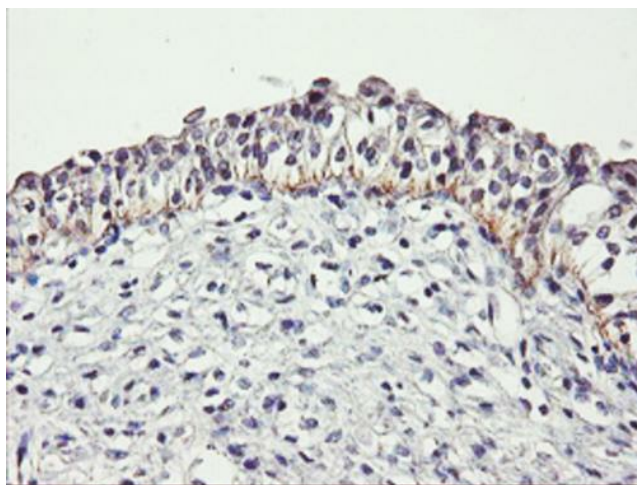
HEK293T cells transfected with either [RC203798] overexpress plasmid (Red) or empty vector control plasmid (Blue) were immunostained by anti-DTNB antibody ([TA504326]), and then analyzed by flow cytometry.



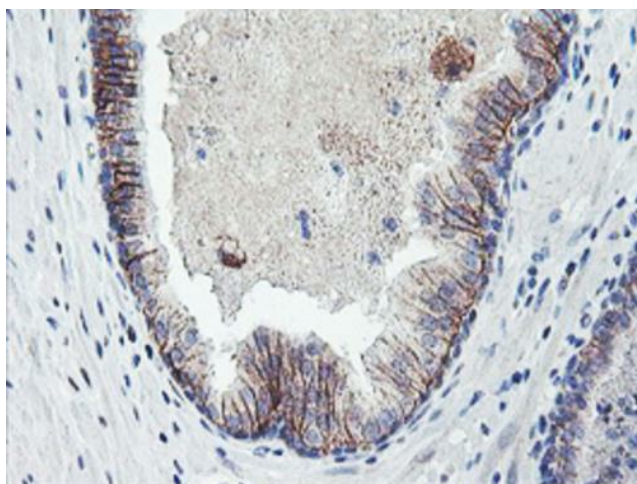
Anti-DTNB mouse monoclonal antibody ([TA504326]) immunofluorescent staining of COS7 cells transiently transfected by pCMV6-ENTRY DTNB ([RC203798]).



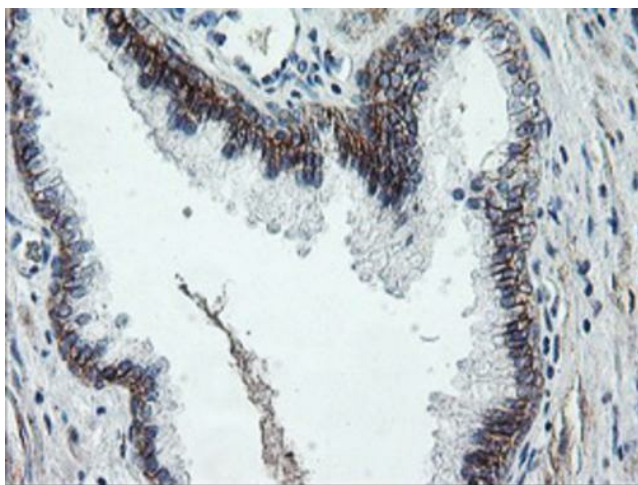
HEK293T cells were transfected with the pCMV6-ENTRY control (Cat# [PS100001], Left lane) or pCMV6-ENTRY DTNB (Cat# [RC203798], Right lane) cDNA for 48 hrs and lysed. Equivalent amounts of cell lysates (5 ug per lane) were separated by SDS-PAGE and immunoblotted with anti-DTNB (Cat# [TA504326]). Positive lysates [LY405251] (100ug) and [LC405251] (20ug) can be purchased separately from OriGene.



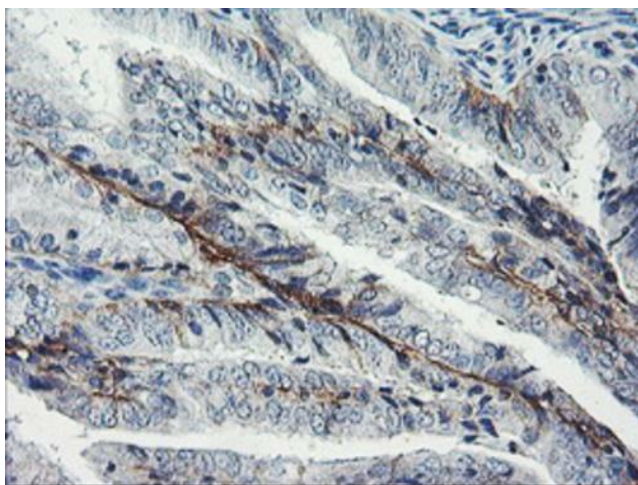
Immunohistochemical staining of paraffin-embedded Carcinoma of Human bladder tissue using anti-DTNB mouse monoclonal antibody. Heat-induced epitope retrieval by EDTA solution buffer pH 8.0 at 120°C for 3 min.



Immunohistochemical staining of paraffin-embedded Carcinoma of Human prostate tissue using anti-DTNB mouse monoclonal antibody. Heat-induced epitope retrieval by EDTA solution buffer pH 8.0 at 120°C for 3 min.



Immunohistochemical staining of paraffin-embedded Human prostate tissue within the normal limits using anti-DTNB mouse monoclonal antibody. Heat-induced epitope retrieval by EDTA solution buffer pH 8.0 at 120°C for 3 min.



Immunohistochemical staining of paraffin-embedded Adenocarcinoma of Human endometrium tissue using anti-DTNB mouse monoclonal antibody. Heat-induced epitope retrieval by EDTA solution buffer pH 8.0 at 120°C for 3 min.