

## Product datasheet for **TA504323BM**

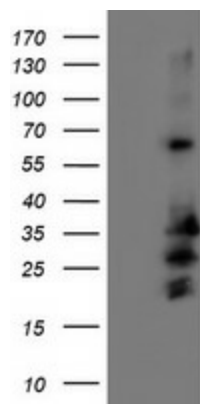
### **C5orf19 (REEP2) Mouse Monoclonal Antibody (HRP conjugated) [Clone ID: OTI2C7]**

#### **Product data:**

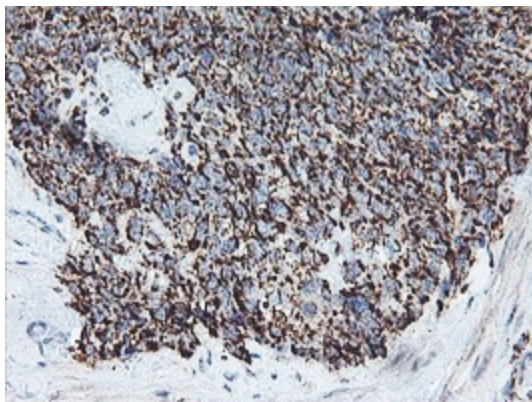
Product Type:	Primary Antibodies
Clone Name:	OTI2C7
Applications:	FC, IF, IHC, WB
Recommended Dilution:	WB 1:500~2000, IHC 1:150, IF 1:100, FLOW 1:100
Reactivity:	Human, Mouse, Rat
Host:	Mouse
Isotype:	IgG2a
Clonality:	Monoclonal
Immunogen:	Full length human recombinant protein of human REEP2(NP_057690) produced in HEK293T cell.
Formulation:	PBS (pH 7.3) containing 1% BSA, 50% glycerol.
Concentration:	0.5 mg/ml
Purification:	Purified from mouse ascites fluids or tissue culture supernatant by affinity chromatography (protein A/G)
Conjugation:	HRP
Storage:	Store at -20°C as received.
Stability:	Stable for 12 months from date of receipt.
Predicted Protein Size:	28.1 kDa
Gene Name:	receptor accessory protein 2
Database Link:	<a href="#">NP_057690</a> <a href="#">Entrez Gene 225362</a> <a href="#">MouseEntrez Gene 682105</a> <a href="#">RatEntrez Gene 51308</a> <a href="#">Human Q9BRK0</a>
Synonyms:	C5orf19; SGC32445; SPG72; Yip2d
Protein Families:	Druggable Genome, Transmembrane



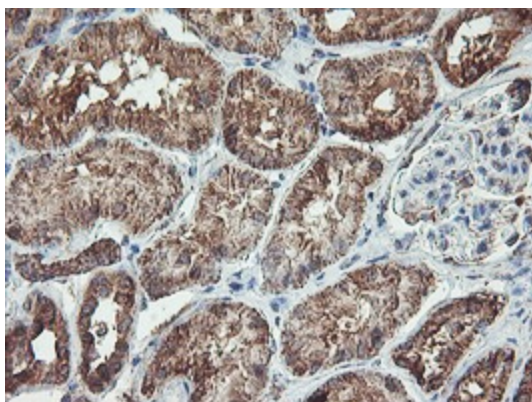
[View online »](#)

**Product images:**

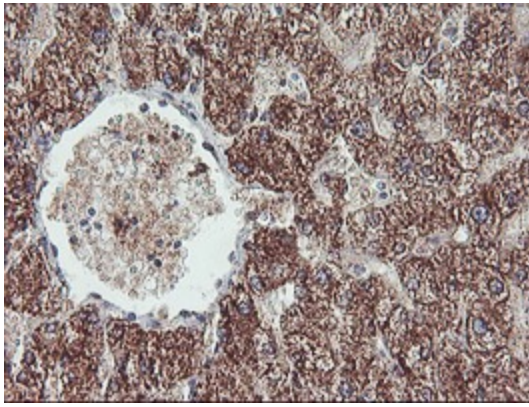
HEK293T cells were transfected with the pCMV6-ENTRY control (Cat# [PS100001], Left lane) or pCMV6-ENTRY REEP2 (Cat# [RC202507], Right lane) cDNA for 48 hrs and lysed. Equivalent amounts of cell lysates (5 ug per lane) were separated by SDS-PAGE and immunoblotted with anti-REEP2 (Cat# [TA504323]). Positive lysates [LY413861] (100ug) and [LC413861] (20ug) can be purchased separately from OriGene.



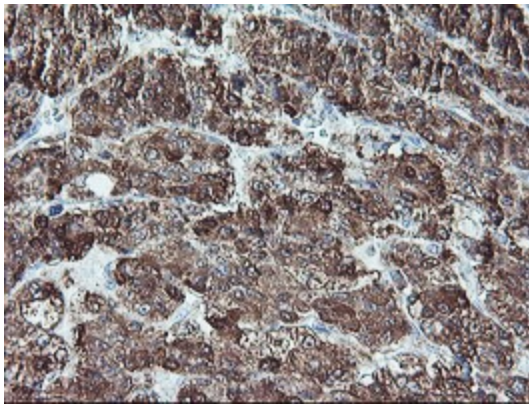
Immunohistochemical staining of paraffin-embedded Adenocarcinoma of Human breast tissue using anti-REEP2 mouse monoclonal antibody. (Heat-induced epitope retrieval by 10mM citric buffer, pH6.0, 100°C for 10min, [TA504323])



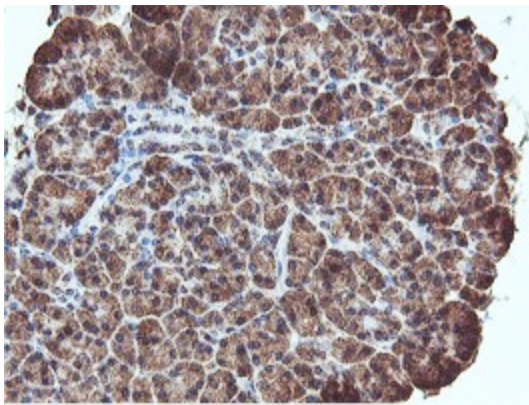
Immunohistochemical staining of paraffin-embedded Human Kidney tissue within the normal limits using anti-REEP2 mouse monoclonal antibody. (Heat-induced epitope retrieval by 10mM citric buffer, pH6.0, 100°C for 10min, [TA504323])



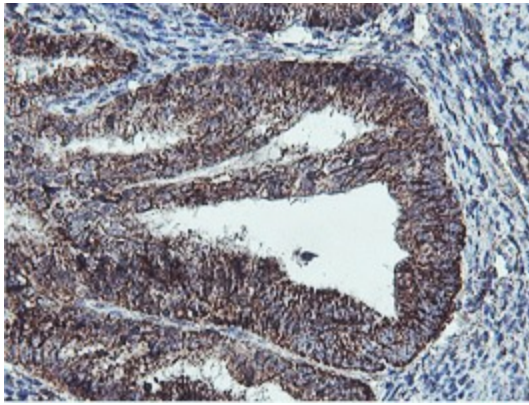
Immunohistochemical staining of paraffin-embedded Human liver tissue within the normal limits using anti-REEP2 mouse monoclonal antibody. (Heat-induced epitope retrieval by 10mM citric buffer, pH6.0, 100°C for 10min, [TA504323])



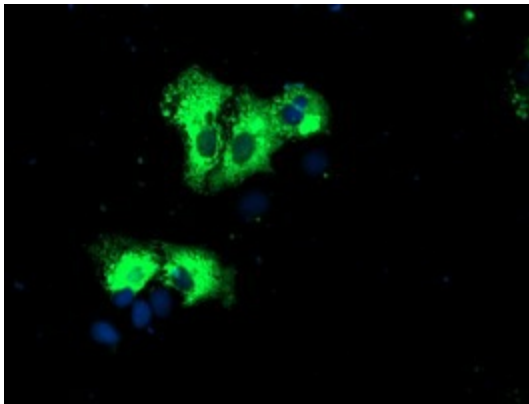
Immunohistochemical staining of paraffin-embedded Carcinoma of Human liver tissue using anti-REEP2 mouse monoclonal antibody. (Heat-induced epitope retrieval by 10mM citric buffer, pH6.0, 100°C for 10min, [TA504323])



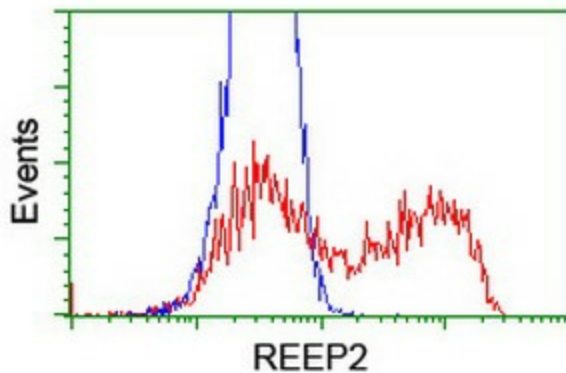
Immunohistochemical staining of paraffin-embedded Human pancreas tissue within the normal limits using anti-REEP2 mouse monoclonal antibody. (Heat-induced epitope retrieval by 10mM citric buffer, pH6.0, 100°C for 10min, [TA504323])



Immunohistochemical staining of paraffin-embedded Adenocarcinoma of Human endometrium tissue using anti-REEP2 mouse monoclonal antibody. (Heat-induced epitope retrieval by 10mM citric buffer, pH6.0, 100°C for 10min, [TA504323])

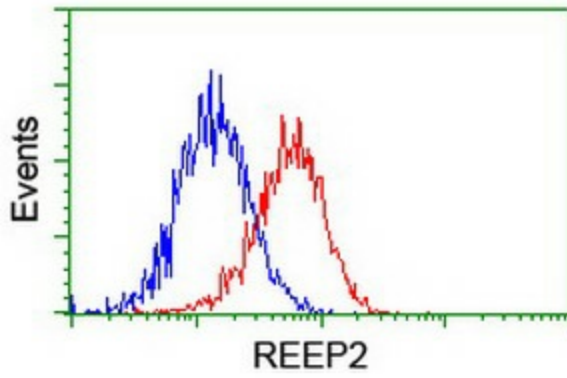


Anti-REEP2 mouse monoclonal antibody ([TA504323]) immunofluorescent staining of COS7 cells transiently transfected by pCMV6-ENTRY REEP2 ([RC202507]).

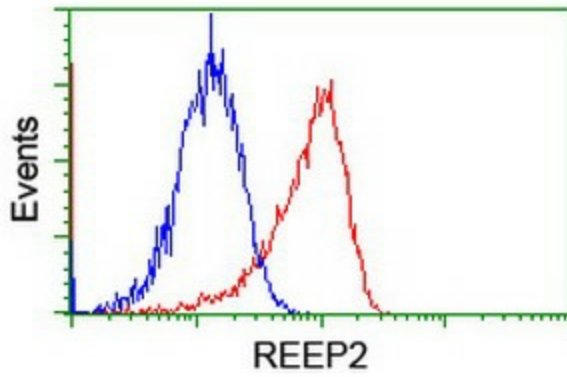


HEK293T cells transfected with either [RC202507] overexpress plasmid (Red) or empty vector control plasmid (Blue) were immunostained by anti-REEP2 antibody ([TA504323]), and then analyzed by flow cytometry.





Flow cytometric Analysis of HeLa cells, using anti-REEP2 antibody ([TA504323]), (Red), compared to a nonspecific negative control antibody, (Blue).



Flow cytometric Analysis of Jurkat cells, using anti-REEP2 antibody ([TA504323]), (Red), compared to a nonspecific negative control antibody, (Blue).