

## Product datasheet for **TA504323**

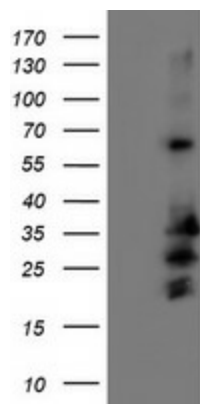
### **C5orf19 (REEP2) Mouse Monoclonal Antibody [Clone ID: OTI2C7]**

#### **Product data:**

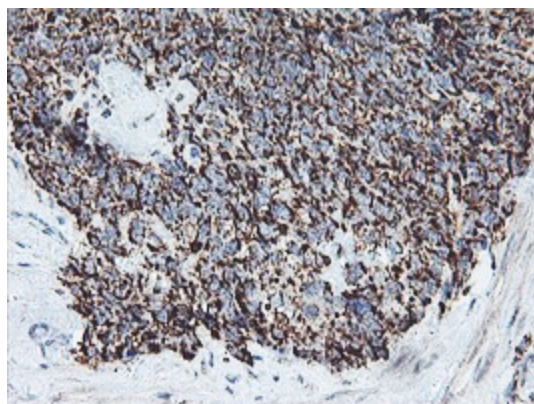
<b>Product Type:</b>	Primary Antibodies
<b>Clone Name:</b>	OTI2C7
<b>Applications:</b>	FC, IF, IHC, WB
<b>Recommended Dilution:</b>	WB 1:500~2000, IHC 1:150, IF 1:100, FLOW 1:100
<b>Reactivity:</b>	Human, Mouse, Rat
<b>Host:</b>	Mouse
<b>Isotype:</b>	IgG2a
<b>Clonality:</b>	Monoclonal
<b>Immunogen:</b>	Full length human recombinant protein of human REEP2(NP_057690) produced in HEK293T cell.
<b>Formulation:</b>	PBS (PH 7.3) containing 1% BSA, 50% glycerol and 0.02% sodium azide.
<b>Concentration:</b>	0.98 mg/ml
<b>Purification:</b>	Purified from mouse ascites fluids or tissue culture supernatant by affinity chromatography (protein A/G)
<b>Conjugation:</b>	Unconjugated
<b>Storage:</b>	Store at -20°C as received.
<b>Stability:</b>	Stable for 12 months from date of receipt.
<b>Predicted Protein Size:</b>	28.1 kDa
<b>Gene Name:</b>	receptor accessory protein 2
<b>Database Link:</b>	<a href="#">NP_057690</a> <a href="#">Entrez Gene 225362</a> <a href="#">MouseEntrez Gene 682105</a> <a href="#">RatEntrez Gene 51308</a> <a href="#">Human Q9BRK0</a>
<b>Synonyms:</b>	C5orf19; SGC32445; SPG72; Yip2d
<b>Protein Families:</b>	Druggable Genome, Transmembrane



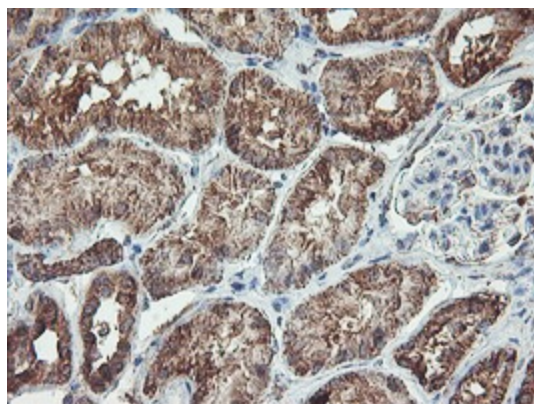
[View online »](#)

**Product images:**

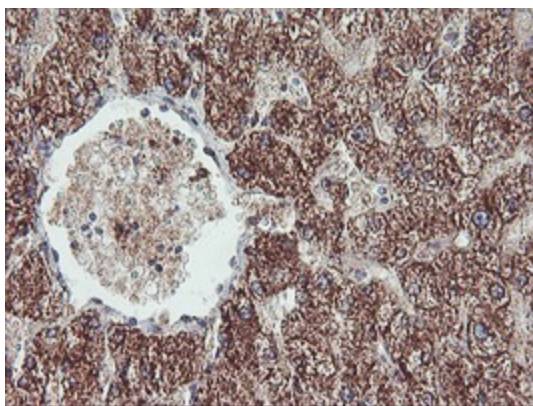
HEK293T cells were transfected with the pCMV6-ENTRY control (Cat# [PS100001], Left lane) or pCMV6-ENTRY REEP2 (Cat# [RC202507], Right lane) cDNA for 48 hrs and lysed. Equivalent amounts of cell lysates (5 ug per lane) were separated by SDS-PAGE and immunoblotted with anti-REEP2 (Cat# TA504323). Positive lysates [LY413861] (100ug) and [LC413861] (20ug) can be purchased separately from OriGene.



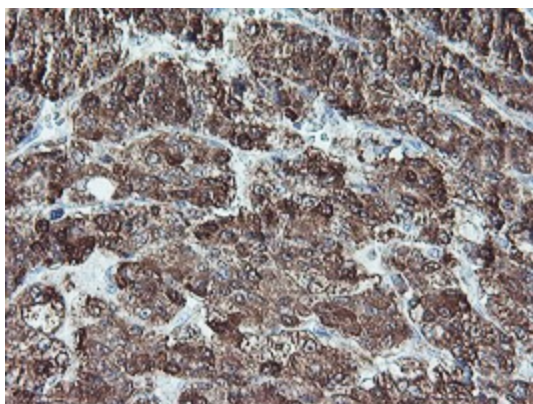
Immunohistochemical staining of paraffin-embedded Adenocarcinoma of Human breast tissue using anti-REEP2 mouse monoclonal antibody. (Heat-induced epitope retrieval by 10mM citric buffer, pH6.0, 100°C for 10min, TA504323)



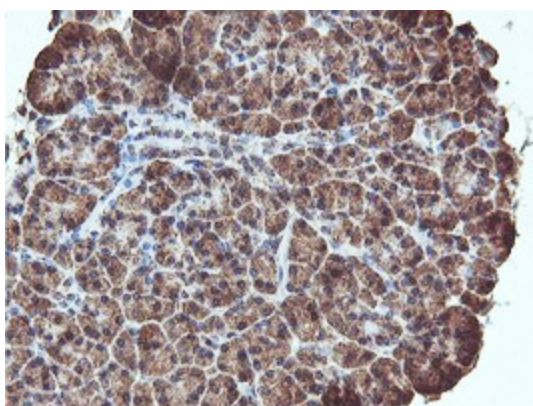
Immunohistochemical staining of paraffin-embedded Human Kidney tissue within the normal limits using anti-REEP2 mouse monoclonal antibody. (Heat-induced epitope retrieval by 10mM citric buffer, pH6.0, 100°C for 10min, TA504323)



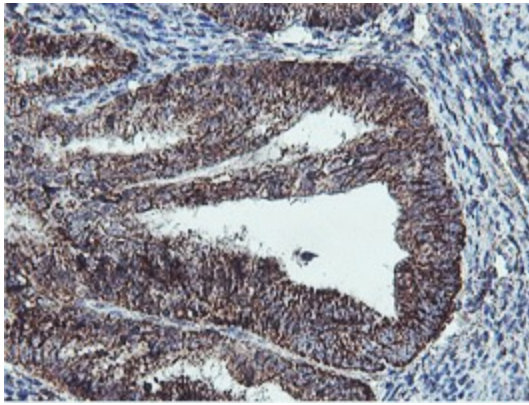
Immunohistochemical staining of paraffin-embedded Human liver tissue within the normal limits using anti-REEP2 mouse monoclonal antibody. (Heat-induced epitope retrieval by 10mM citric buffer, pH6.0, 100°C for 10min, TA504323)



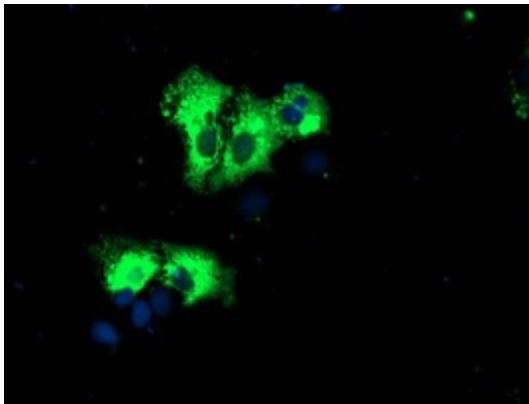
Immunohistochemical staining of paraffin-embedded Carcinoma of Human liver tissue using anti-REEP2 mouse monoclonal antibody. (Heat-induced epitope retrieval by 10mM citric buffer, pH6.0, 100°C for 10min, TA504323)



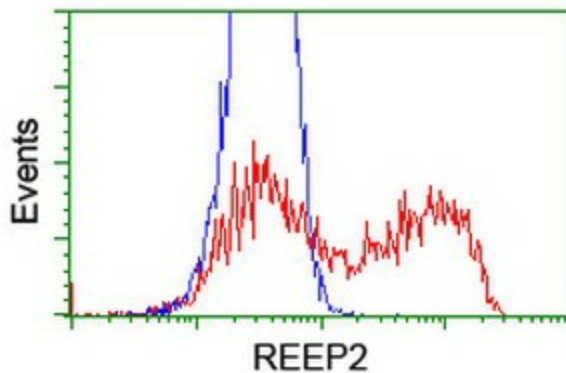
Immunohistochemical staining of paraffin-embedded Human pancreas tissue within the normal limits using anti-REEP2 mouse monoclonal antibody. (Heat-induced epitope retrieval by 10mM citric buffer, pH6.0, 100°C for 10min, TA504323)



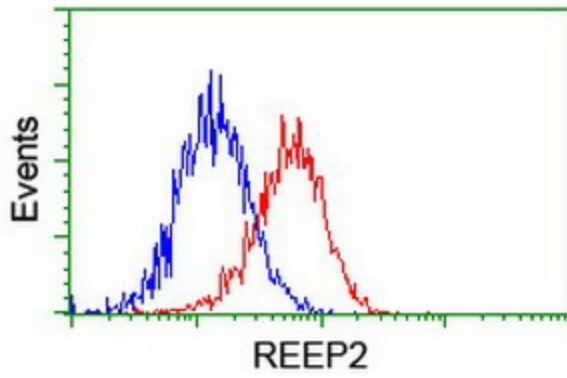
Immunohistochemical staining of paraffin-embedded Adenocarcinoma of Human endometrium tissue using anti-REEP2 mouse monoclonal antibody. (Heat-induced epitope retrieval by 10mM citric buffer, pH6.0, 100°C for 10min, TA504323)



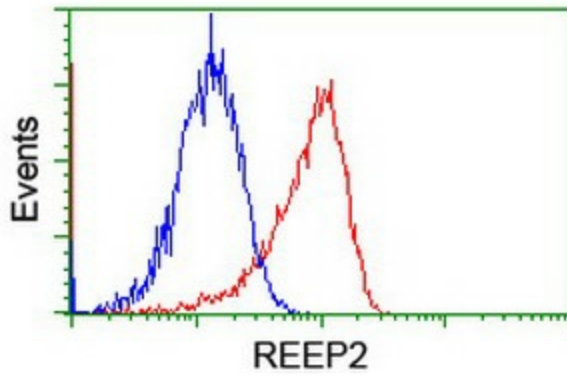
Anti-REEP2 mouse monoclonal antibody (TA504323) immunofluorescent staining of COS7 cells transiently transfected by pCMV6-ENTRY REEP2 ([RC202507]).



HEK293T cells transfected with either [RC202507] overexpress plasmid (Red) or empty vector control plasmid (Blue) were immunostained by anti-REEP2 antibody (TA504323), and then analyzed by flow cytometry.



Flow cytometric Analysis of HeLa cells, using anti-REEP2 antibody (TA504323), (Red), compared to a nonspecific negative control antibody, (Blue).



Flow cytometric Analysis of Jurkat cells, using anti-REEP2 antibody (TA504323), (Red), compared to a nonspecific negative control antibody, (Blue).