

## Product datasheet for **TA504322M**

### **C5orf19 (REEP2) Mouse Monoclonal Antibody [Clone ID: OTI2B7]**

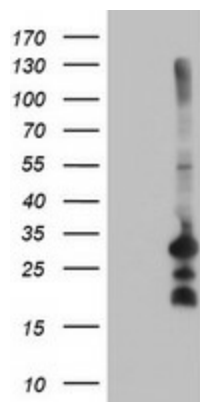
#### **Product data:**

Product Type:	Primary Antibodies
Clone Name:	OTI2B7
Applications:	FC, WB
Recommended Dilution:	WB 1:500~2000, FLOW 1:100
Reactivity:	Human, Dog, Rat, Mouse
Host:	Mouse
Isotype:	IgG2a
Clonality:	Monoclonal
Immunogen:	Full length human recombinant protein of human REEP2(NP_0557690) produced in HEK293T cell.
Formulation:	PBS (pH 7.3) containing 1% BSA, 50% glycerol and 0.02% sodium azide.
Concentration:	1.16 mg/ml
Purification:	Purified from mouse ascites fluids or tissue culture supernatant by affinity chromatography (protein A/G)
Conjugation:	Unconjugated
Storage:	Store at -20°C as received.
Stability:	Stable for 12 months from date of receipt.
Predicted Protein Size:	28.1 kDa
Gene Name:	receptor accessory protein 2
Database Link:	<a href="#">NP_057690</a> <a href="#">Entrez Gene 225362 Mouse</a> <a href="#">Entrez Gene 682105 Rat</a> <a href="#">Entrez Gene 100683708 Dog</a> <a href="#">Entrez Gene 51308 Human</a> <a href="#">Q9BRK0</a>
Synonyms:	C5orf19; SGC32445; SPG72; Yip2d
Protein Families:	Druggable Genome, Transmembrane

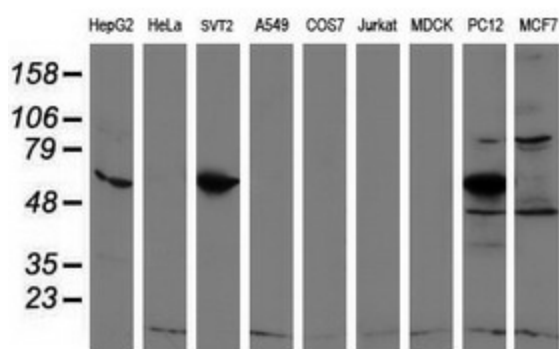


[View online »](#)

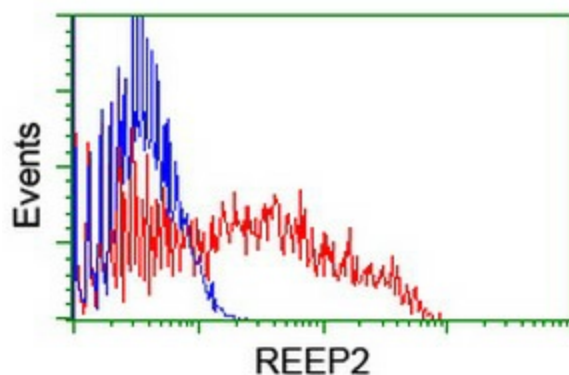
## Product images:



HEK293T cells were transfected with the pCMV6-ENTRY control (Left lane) or pCMV6-ENTRY REEP2 ([RC202507], Right lane) cDNA for 48 hrs and lysed. Equivalent amounts of cell lysates (5 ug per lane) were separated by SDS-PAGE and immunoblotted with anti-REEP2. Positive lysates [LY413861] (100ug) and [LC413861] (20ug) can be purchased separately from OriGene.



Western blot analysis of extracts (35ug) from 9 different cell lines by using anti-REEP2 monoclonal antibody.



HEK293T cells transfected with either [RC202507] overexpress plasmid (Red) or empty vector control plasmid (Blue) were immunostained by anti-REEP2 antibody ([TA504322]), and then analyzed by flow cytometry.