

Product datasheet for **TA504319BM**

NPTN Mouse Monoclonal Antibody (HRP conjugated) [Clone ID: OTI3C4]

Product data:

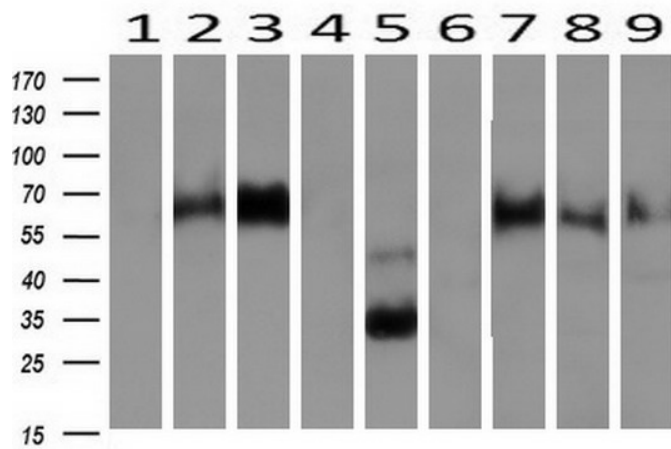
Product Type:	Primary Antibodies
Clone Name:	OTI3C4
Applications:	IF, IHC, WB
Recommended Dilution:	WB 1:500~2000, IHC 1:150, IF 1:100
Reactivity:	Human, Dog, Rat, Monkey
Host:	Mouse
Isotype:	IgG1
Clonality:	Monoclonal
Immunogen:	Full length human recombinant protein of human NPTN(NP_059429) produced in HEK293T cell.
Formulation:	PBS (pH 7.3) containing 1% BSA, 50% glycerol.
Concentration:	0.5 mg/ml
Purification:	Purified from mouse ascites fluids or tissue culture supernatant by affinity chromatography (protein A/G)
Conjugation:	HRP
Storage:	Store at -20°C as received.
Stability:	Stable for 12 months from date of receipt.
Predicted Protein Size:	28.7 kDa
Gene Name:	neuroplastin
Database Link:	NP_059429 Entrez Gene 56064 Rat Entrez Gene 487637 Dog Entrez Gene 699627 Monkey Entrez Gene 27020 Human Q9Y639
Background:	This gene encodes a type I transmembrane protein belonging to the Ig superfamily. The protein is believed to be involved in cell-cell interactions or cell-substrate interactions. Alternative splicing results in multiple transcript variants. [provided by RefSeq]
Synonyms:	GP55; GP65; np55; np65; SDFR1; SDR1



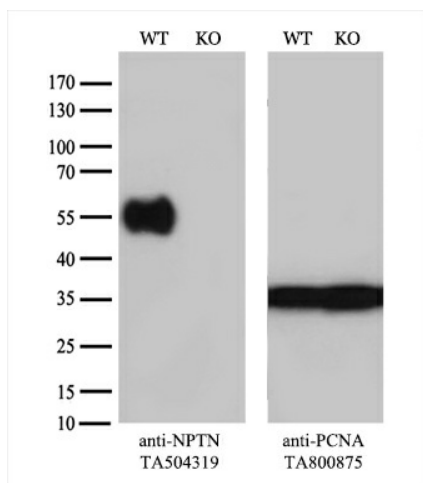
[View online »](#)

Protein Families: Druggable Genome, Transmembrane

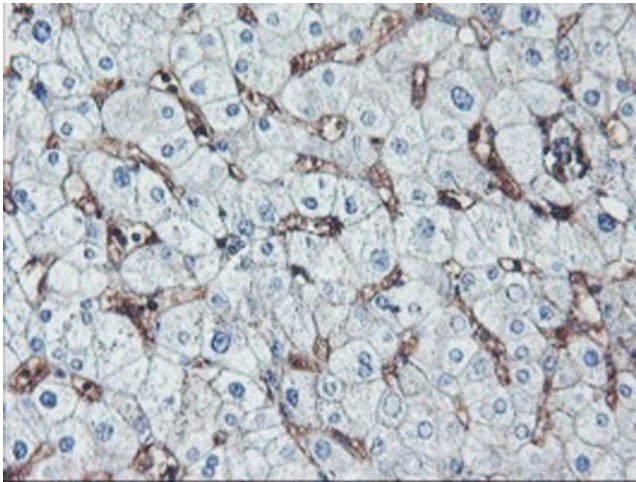
Product images:



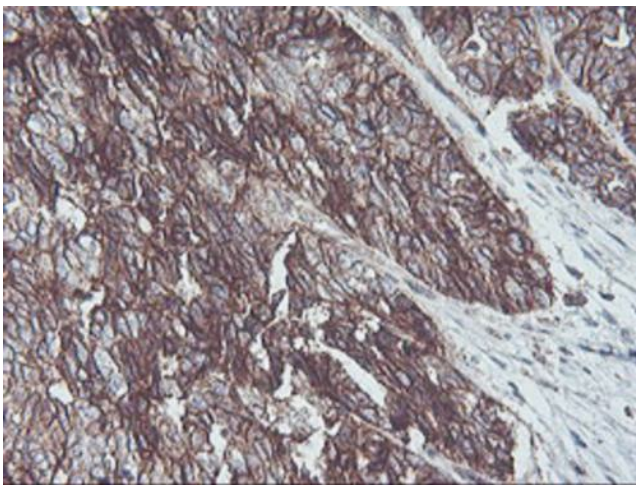
Western blot analysis of extracts (10ug) from 9 Human tissue by using anti-NPTN monoclonal antibody at 1:200 (1: Testis; 2: Omentum; 3: Uterus; 4: Breast; 5: Brain; 6: Liver; 7: Ovary; 8: Thyroid gland; 9: Colon).



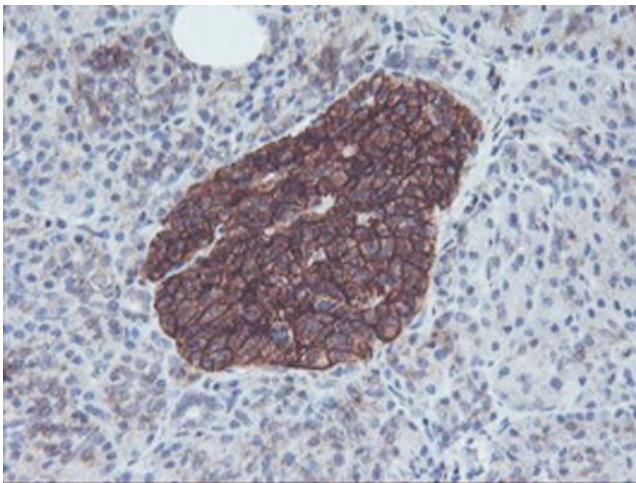
Equivalent amounts of cell lysates (10 ug per lane) of wild-type HEK293T cells (WT, Cat# LC810293T) and NPTN-Knockout HEK293T cells (KO, Cat# [LC842402]) were separated by SDS-PAGE and immunoblotted with anti-NPTN monoclonal antibody [TA504319] (1:1000). Then the blotted membrane was stripped and reprobed with anti-PCNA antibody as a loading control.



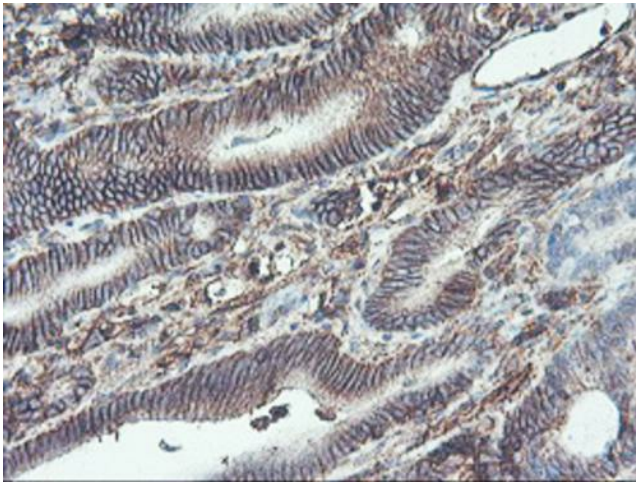
Immunohistochemical staining of paraffin-embedded Human liver tissue within the normal limits using anti-NPTN mouse monoclonal antibody. (Heat-induced epitope retrieval by 10mM citric buffer, pH6.0, 100°C for 10min, [TA504319])



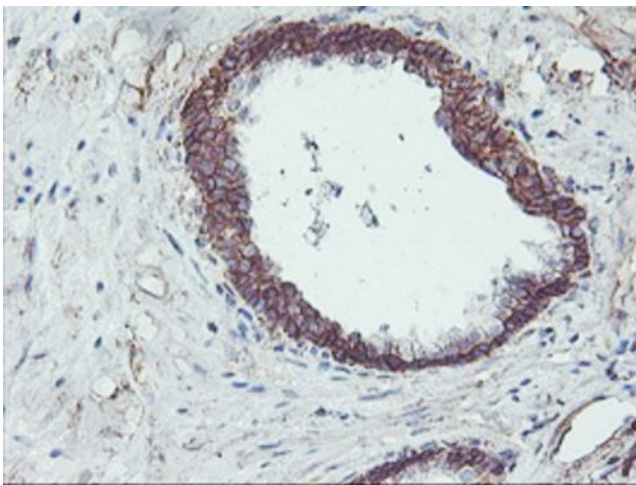
Immunohistochemical staining of paraffin-embedded Adenocarcinoma of Human ovary tissue using anti-NPTN mouse monoclonal antibody. (Heat-induced epitope retrieval by 10mM citric buffer, pH6.0, 100°C for 10min, [TA504319])



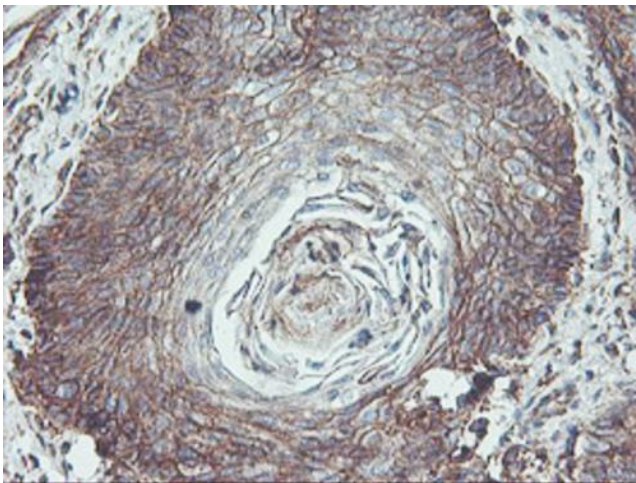
Immunohistochemical staining of paraffin-embedded Human pancreas tissue within the normal limits using anti-NPTN mouse monoclonal antibody. (Heat-induced epitope retrieval by 10mM citric buffer, pH6.0, 100°C for 10min, [TA504319])



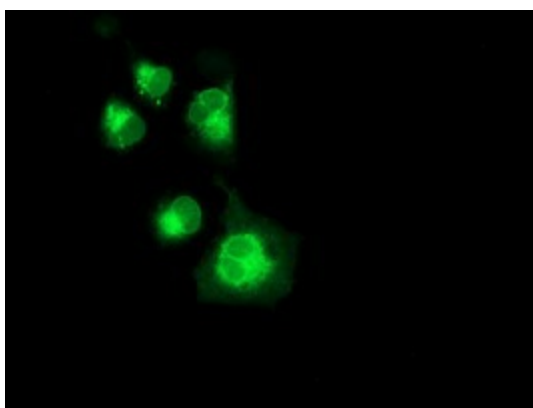
Immunohistochemical staining of paraffin-embedded Carcinoma of Human pancreas tissue using anti-NPTN mouse monoclonal antibody. (Heat-induced epitope retrieval by 10mM citric buffer, pH6.0, 100°C for 10min, [TA504319])



Immunohistochemical staining of paraffin-embedded Carcinoma of Human prostate tissue using anti-NPTN mouse monoclonal antibody. (Heat-induced epitope retrieval by 10mM citric buffer, pH6.0, 100°C for 10min, [TA504319])



Immunohistochemical staining of paraffin-embedded Carcinoma of Human bladder tissue using anti-NPTN mouse monoclonal antibody. (Heat-induced epitope retrieval by 10mM citric buffer, pH6.0, 100°C for 10min, [TA504319])



Anti-NPTN mouse monoclonal antibody ([TA504319]) immunofluorescent staining of COS7 cells transiently transfected by pCMV6-ENTRY NPTN ([RC210326]).