

Product datasheet for **TA504315AM**

Coatomer subunit delta (ARCN1) Mouse Monoclonal Antibody (Biotin conjugated) [Clone ID: OTI6A6]

Product data:

Product Type:	Primary Antibodies
Clone Name:	OTI6A6
Applications:	FC, IF, IHC, WB
Recommended Dilution:	WB 1:500~2000, IHC 1:50, IF 1:100, FLOW 1:100
Reactivity:	Human, Dog, Rat, Monkey, Mouse
Host:	Mouse
Isotype:	IgG1
Clonality:	Monoclonal
Immunogen:	Full length human recombinant protein of human ARCN1(NP_001646) produced in HEK293T cell.
Formulation:	PBS (pH 7.3) containing 1% BSA, 50% glycerol and 0.02% sodium azide.
Concentration:	0.5 mg/ml
Purification:	Purified from mouse ascites fluids or tissue culture supernatant by affinity chromatography (protein A/G)
Conjugation:	Biotin
Storage:	Store at -20°C as received.
Stability:	Stable for 12 months from date of receipt.
Predicted Protein Size:	57 kDa
Gene Name:	archain 1
Database Link:	NP_001646 Entrez Gene 213827 MouseEntrez Gene 300674 RatEntrez Gene 479415 DogEntrez Gene 700328 MonkeyEntrez Gene 372 Human P48444



[View online »](#)

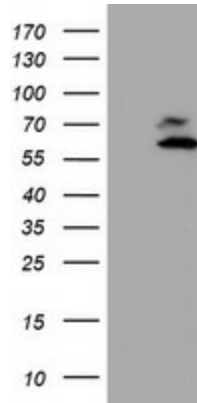
Background:

This gene maps in a region, which include the mixed lineage leukemia and Friend leukemia virus integration 1 genes, where multiple disease-associated chromosome translocations occur. It is an intracellular protein. Archain sequences are well conserved among eukaryotes and this protein may play a fundamental role in eukaryotic cell biology. It has similarities to heat shock proteins and clathrin-associated proteins, and may be involved in vesicle structure or trafficking. [provided by RefSeq, Jul 2008]

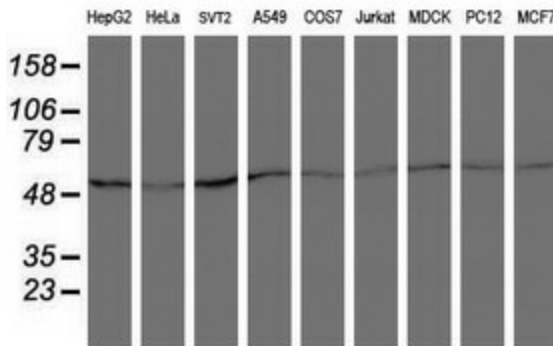
Synonyms:

COPD

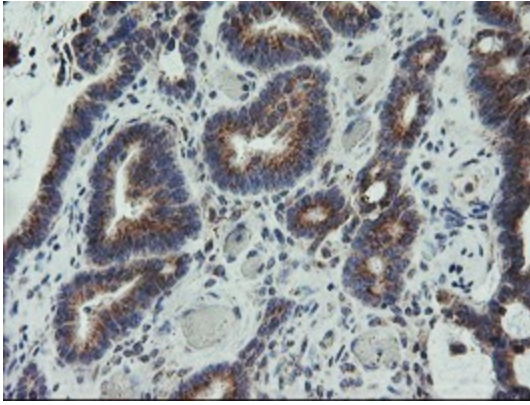
Product images:



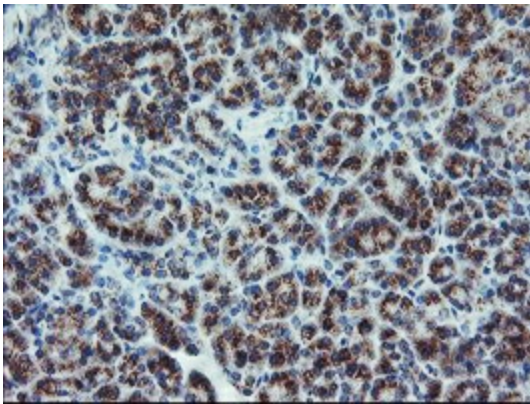
HEK293T cells were transfected with the pCMV6-ENTRY control (Left lane) or pCMV6-ENTRY ARCN1 ([RC210778], Right lane) cDNA for 48 hrs and lysed. Equivalent amounts of cell lysates (5 ug per lane) were separated by SDS-PAGE and immunoblotted with anti-ARCN1. Positive lysates [LY400624] (100ug) and [LC400624] (20ug) can be purchased separately from OriGene.



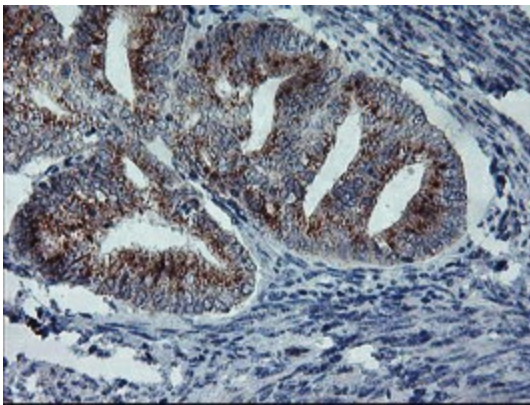
Western blot analysis of extracts (35ug) from 9 different cell lines by using anti-ARCN1 monoclonal antibody (HepG2: human; HeLa: human; SVT2: mouse; A549: human; COS7: monkey; Jurkat: human; MDCK: canine; PC12: rat; MCF7: human).



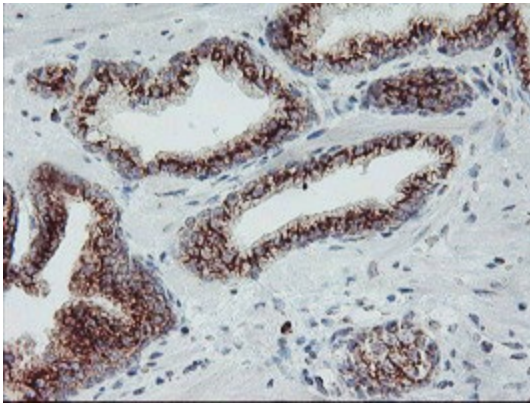
Immunohistochemical staining of paraffin-embedded Adenocarcinoma of Human colon tissue using anti-ARCN1 mouse monoclonal antibody. (Heat-induced epitope retrieval by 10mM citric buffer, pH6.0, 100°C for 10min, [TA504315])



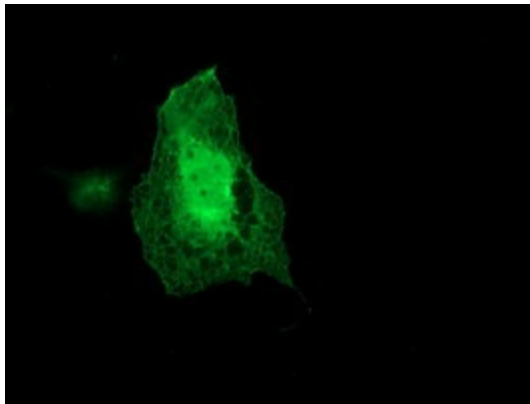
Immunohistochemical staining of paraffin-embedded Human pancreas tissue within the normal limits using anti-ARCN1 mouse monoclonal antibody. (Heat-induced epitope retrieval by 10mM citric buffer, pH6.0, 100°C for 10min, [TA504315])



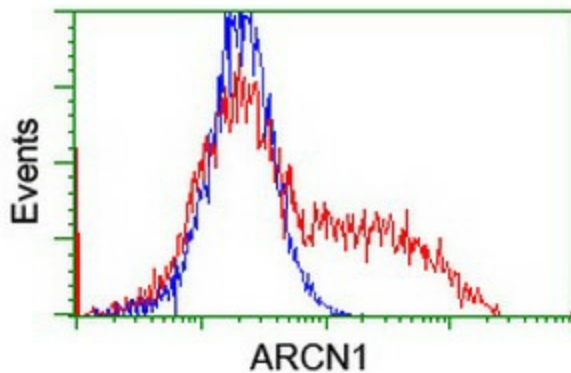
Immunohistochemical staining of paraffin-embedded Adenocarcinoma of Human endometrium tissue using anti-ARCN1 mouse monoclonal antibody. (Heat-induced epitope retrieval by 10mM citric buffer, pH6.0, 100°C for 10min, [TA504315])



Immunohistochemical staining of paraffin-embedded Carcinoma of Human prostate tissue using anti-ARCN1 mouse monoclonal antibody. (Heat-induced epitope retrieval by 10mM citric buffer, pH6.0, 100°C for 10min, [TA504315])



Anti-ARCN1 mouse monoclonal antibody ([TA504315]) immunofluorescent staining of COS7 cells transiently transfected by pCMV6-ENTRY ARCN1 ([RC210778]).



HEK293T cells transfected with either [RC210778] overexpress plasmid (Red) or empty vector control plasmid (Blue) were immunostained by anti-ARCN1 antibody ([TA504315]), and then analyzed by flow cytometry.