

Product datasheet for **TA504310AM**

GADD34 (PPP1R15A) Mouse Monoclonal Antibody (Biotin conjugated) [Clone ID: OTI3D12]

Product data:

Product Type:	Primary Antibodies
Clone Name:	OTI3D12
Applications:	FC, IF, IHC, WB
Recommended Dilution:	WB 1:500~2000, IHC 1:150, IF 1:100, FLOW 1:100
Reactivity:	Human, Dog, Rat, Monkey, Mouse
Host:	Mouse
Isotype:	IgG2b
Clonality:	Monoclonal
Immunogen:	Full length human recombinant protein of human PPP1R15A(NP_055145) produced in HEK293T cell.
Formulation:	PBS (pH 7.3) containing 1% BSA, 50% glycerol and 0.02% sodium azide.
Concentration:	0.5 mg/ml
Purification:	Purified from mouse ascites fluids or tissue culture supernatant by affinity chromatography (protein A/G)
Conjugation:	Biotin
Storage:	Store at -20°C as received.
Stability:	Stable for 12 months from date of receipt.
Predicted Protein Size:	73.3 kDa
Gene Name:	protein phosphatase 1 regulatory subunit 15A
Database Link:	NP_055145 Entrez Gene 17872 Mouse Entrez Gene 171071 Rat Entrez Gene 476419 Dog Entrez Gene 718350 Monkey Entrez Gene 23645 Human O75807
Background:	This gene is a member of a group of genes whose transcript levels are increased following stressful growth arrest conditions and treatment with DNA-damaging agents. The induction of this gene by ionizing radiation occurs in certain cell lines regardless of p53 status, and its protein response is correlated with apoptosis following ionizing radiation. [provided by RefSeq, Jul 2008]

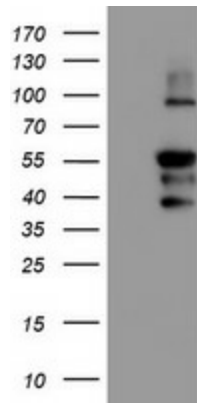


[View online »](#)

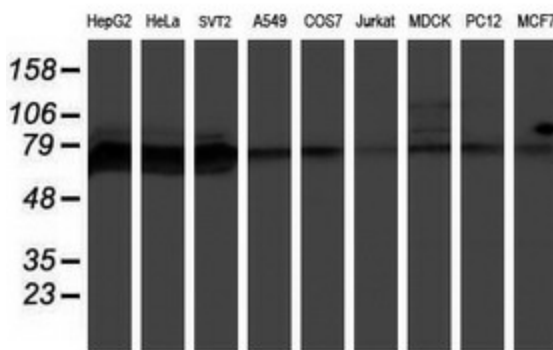
Synonyms: GADD34

Protein Families: Druggable Genome

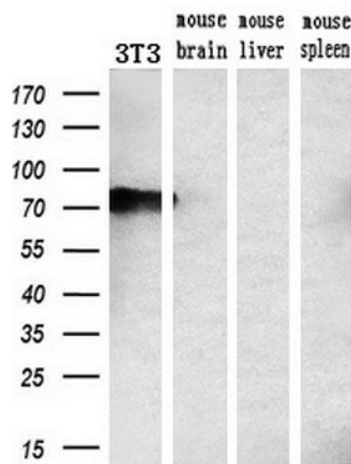
Product images:



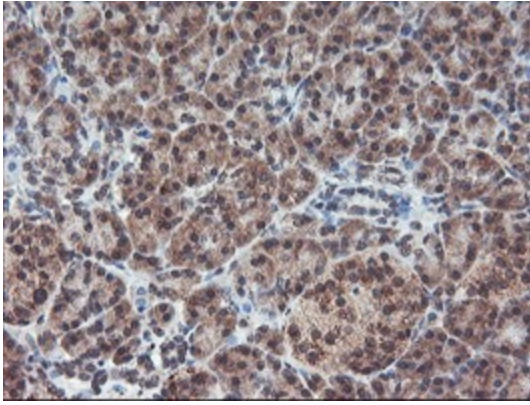
HEK293T cells were transfected with the pCMV6-ENTRY control (Cat# [PS100001], Left lane) or pCMV6-ENTRY PPP1R15A (Cat# [RC200581], Right lane) cDNA for 48 hrs and lysed. Equivalent amounts of cell lysates (5 ug per lane) were separated by SDS-PAGE and immunoblotted with anti-PPP1R15A(Cat# [TA504310]). Positive lysates [LY415358] (100ug) and [LC415358] (20ug) can be purchased separately from OriGene.



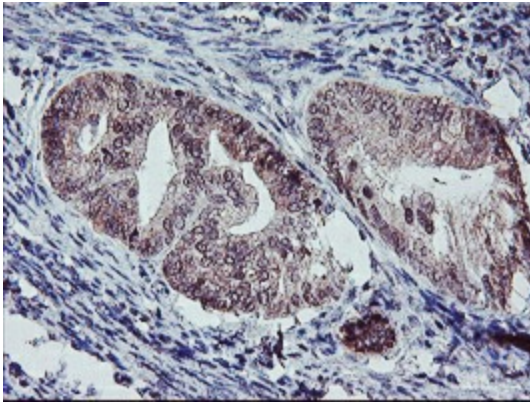
Western blot analysis of extracts (35ug) from 9 different cell lines by using anti-PPP1R15A monoclonal antibody (HepG2: human; HeLa: human; SVT2: mouse; A549: human; COS7: monkey; Jurkat: human; MDCK: canine; PC12: rat; MCF7: human).



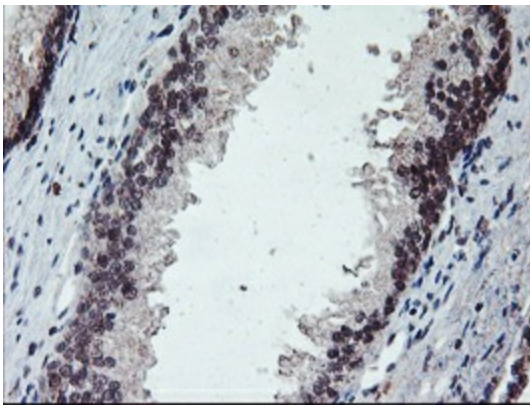
Western blot analysis of extracts (10ug) from a mouse cell line and 3 different mouse tissues by using anti-PPP1R15A monoclonal antibody (1:200).



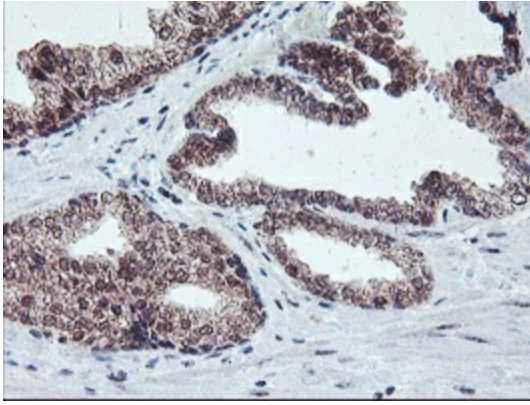
Immunohistochemical staining of paraffin-embedded Human pancreas tissue within the normal limits using anti-PPP1R15A mouse monoclonal antibody. (Heat-induced epitope retrieval by 10mM citric buffer, pH6.0, 100°C for 10min, [TA504310])



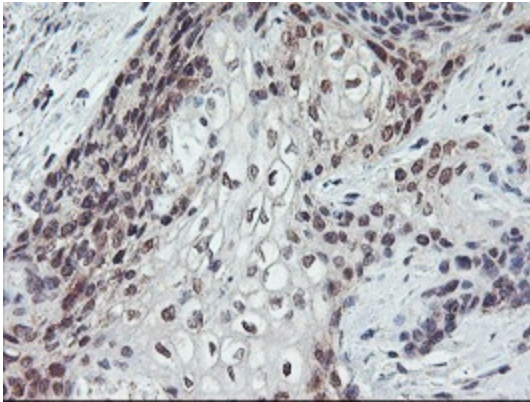
Immunohistochemical staining of paraffin-embedded Adenocarcinoma of Human endometrium tissue using anti-PPP1R15A mouse monoclonal antibody. (Heat-induced epitope retrieval by 10mM citric buffer, pH6.0, 100°C for 10min, [TA504310])



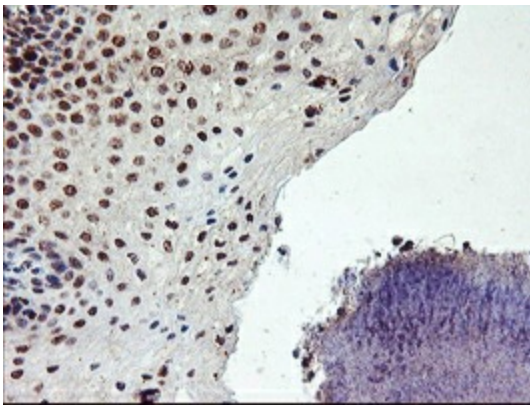
Immunohistochemical staining of paraffin-embedded Human prostate tissue within the normal limits using anti-PPP1R15A mouse monoclonal antibody. (Heat-induced epitope retrieval by 10mM citric buffer, pH6.0, 100°C for 10min, [TA504310])



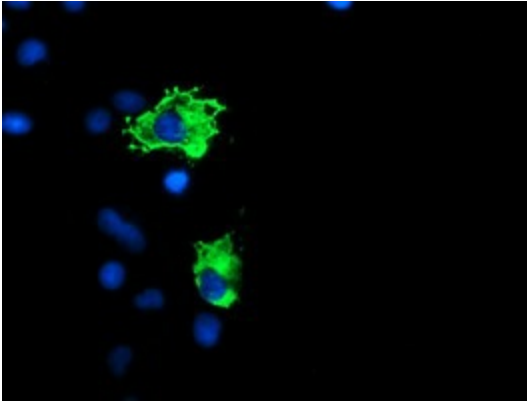
Immunohistochemical staining of paraffin-embedded Carcinoma of Human prostate tissue using anti-PPP1R15A mouse monoclonal antibody. (Heat-induced epitope retrieval by 10mM citric buffer, pH6.0, 100°C for 10min, [TA504310])



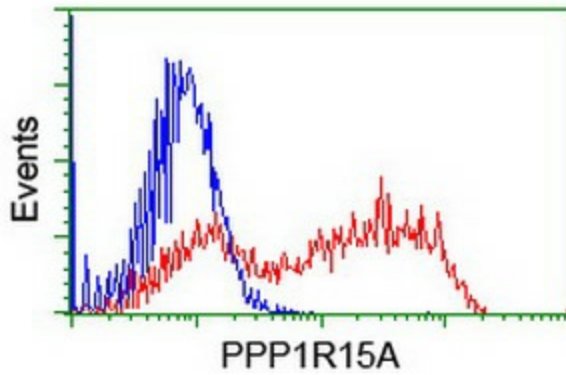
Immunohistochemical staining of paraffin-embedded Carcinoma of Human bladder tissue using anti-PPP1R15A mouse monoclonal antibody. (Heat-induced epitope retrieval by 10mM citric buffer, pH6.0, 100°C for 10min, [TA504310])



Immunohistochemical staining of paraffin-embedded Human tonsil within the normal limits using anti-PPP1R15A mouse monoclonal antibody. (Heat-induced epitope retrieval by 10mM citric buffer, pH6.0, 100°C for 10min, [TA504310])



Anti-PPP1R15A mouse monoclonal antibody ([TA504310]) immunofluorescent staining of COS7 cells transiently transfected by pCMV6-ENTRY PPP1R15A ([RC200581]).



HEK293T cells transfected with either [RC200581] overexpress plasmid (Red) or empty vector control plasmid (Blue) were immunostained by anti-PPP1R15A antibody ([TA504310]), and then analyzed by flow cytometry.