

## Product datasheet for **TA504306S**

### CENPH Mouse Monoclonal Antibody [Clone ID: OT11C2]

#### Product data:

Product Type:	Primary Antibodies
Clone Name:	OT11C2
Applications:	WB
Recommended Dilution:	WB 1:2000
Reactivity:	Human
Host:	Mouse
Isotype:	IgG1
Clonality:	Monoclonal
Immunogen:	Full length human recombinant protein of human CENPH(NP_075060) produced in HEK293T cell.
Formulation:	PBS (pH 7.3) containing 1% BSA, 50% glycerol and 0.02% sodium azide.
Concentration:	1 mg/ml
Purification:	Purified from mouse ascites fluids or tissue culture supernatant by affinity chromatography (protein A/G)
Conjugation:	Unconjugated
Storage:	Store at -20°C as received.
Stability:	Stable for 12 months from date of receipt.
Predicted Protein Size:	28.3 kDa
Gene Name:	centromere protein H
Database Link:	<a href="#">NP_075060</a> <a href="#">Entrez Gene 64946 Human</a> <a href="#">Q9H3R5</a>



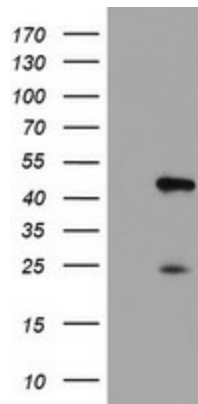
[View online »](#)

**Background:** Centromere and kinetochore proteins play a critical role in centromere structure, kinetochore formation, and sister chromatid separation. The protein encoded by this gene colocalizes with inner kinetochore plate proteins CENP-A and CENP-C in both interphase and metaphase. It localizes outside of centromeric heterochromatin, where CENP-B is localized, and inside the kinetochore corona, where CENP-E is localized during prometaphase. It is thought that this protein can bind to itself, as well as to CENP-A, CENP-B or CENP-C. Multimers of the protein localize constitutively to the inner kinetochore plate and play an important role in the organization and function of the active centromere-kinetochore complex. [provided by RefSeq]

**Synonyms:** centromere protein H; homolog; kinetochore protein CENP-H; MIND kinetochore complex component; NNF1; PMF1

**Protein Families:** Druggable Genome

### Product images:



HEK293T cells were transfected with the pCMV6-ENTRY control (Left lane) or pCMV6-ENTRY CENPH ([RC204531], Right lane) cDNA for 48 hrs and lysed. Equivalent amounts of cell lysates (5 ug per lane) were separated by SDS-PAGE and immunoblotted with anti-CENPH. Positive lysates [LY402956] (100ug) and [LC402956] (20ug) can be purchased separately from OriGene.