

## Product datasheet for **TA504300BM**

### Epsin 2 (EPN2) Mouse Monoclonal Antibody (HRP conjugated) [Clone ID: OTI1C5]

#### Product data:

Product Type:	Primary Antibodies
Clone Name:	OTI1C5
Applications:	IF, IHC, WB
Recommended Dilution:	WB 1:500~2000, IHC 1:150, IF 1:100
Reactivity:	Human, Monkey, Mouse, Rat
Host:	Mouse
Isotype:	IgG1
Clonality:	Monoclonal
Immunogen:	Full length human recombinant protein of human EPN2(NP_055779) produced in HEK293T cell.
Formulation:	PBS (pH 7.3) containing 1% BSA, 50% glycerol.
Concentration:	0.5 mg/ml
Purification:	Purified from mouse ascites fluids or tissue culture supernatant by affinity chromatography (protein A/G)
Conjugation:	HRP
Storage:	Store at -20°C as received.
Stability:	Stable for 12 months from date of receipt.
Predicted Protein Size:	68.3 kDa
Gene Name:	epsin 2
Database Link:	<a href="#">NP_055779</a> <a href="#">Entrez Gene 13855 Mouse</a> <a href="#">Entrez Gene 60443 Rat</a> <a href="#">Entrez Gene 702600 Monkey</a> <a href="#">Entrez Gene 22905 Human</a> <a href="#">O95208</a>

**Background:** This gene encodes a protein which interacts with clathrin and adaptor-related protein complex 2, alpha 1 subunit. The protein is found in a brain-derived clathrin-coated vesicle fraction and localizes to the peri-Golgi region and the cell periphery. The protein is thought to be involved in clathrin-mediated endocytosis. Alternate splicing of this gene results in multiple transcript variants encoding different isoforms. [provided by RefSeq]

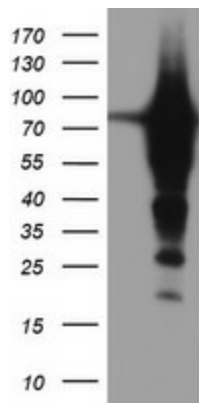


[View online »](#)

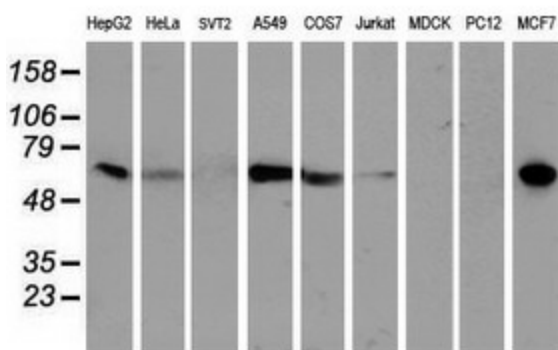
Synonyms: EHB21

Protein Pathways: Endocytosis

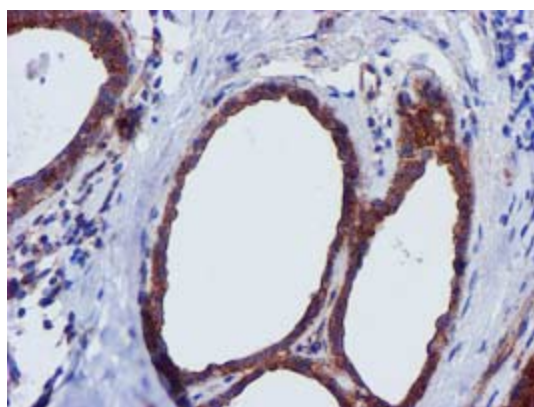
**Product images:**



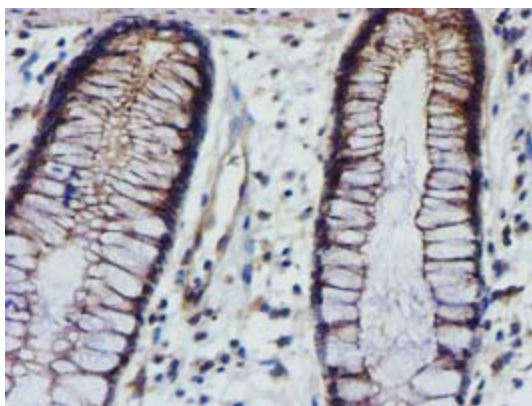
HEK293T cells were transfected with the pCMV6-ENTRY control (Left lane) or pCMV6-ENTRY EPN2 ([RC213652], Right lane) cDNA for 48 hrs and lysed. Equivalent amounts of cell lysates (5 ug per lane) were separated by SDS-PAGE and immunoblotted with anti-EPN2.



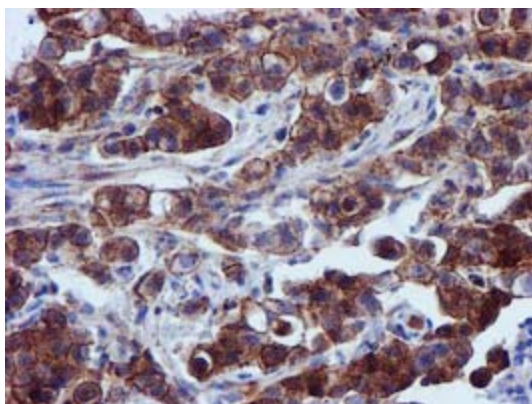
Western blot analysis of extracts (35ug) from 9 different cell lines by using anti-EPN2 monoclonal antibody.



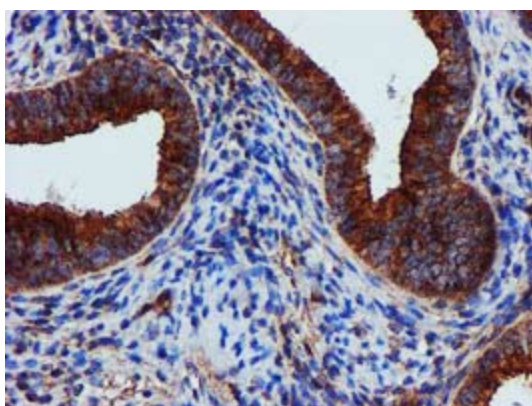
Immunohistochemical staining of paraffin-embedded Human breast tissue within the normal limits using anti-EPN2 mouse monoclonal antibody. (Heat-induced epitope retrieval by 10mM citric buffer, pH6.0, 100°C for 10min, [TA504300])



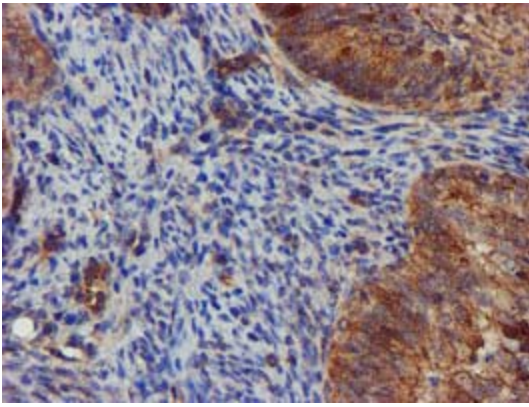
Immunohistochemical staining of paraffin-embedded Human colon tissue within the normal limits using anti-EPN2 mouse monoclonal antibody. (Heat-induced epitope retrieval by 10mM citric buffer, pH6.0, 100°C for 10min, [TA504300])



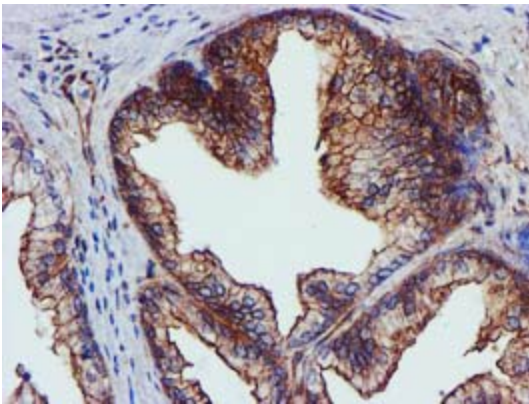
Immunohistochemical staining of paraffin-embedded Carcinoma of Human lung tissue using anti-EPN2 mouse monoclonal antibody. (Heat-induced epitope retrieval by 10mM citric buffer, pH6.0, 100°C for 10min, [TA504300])



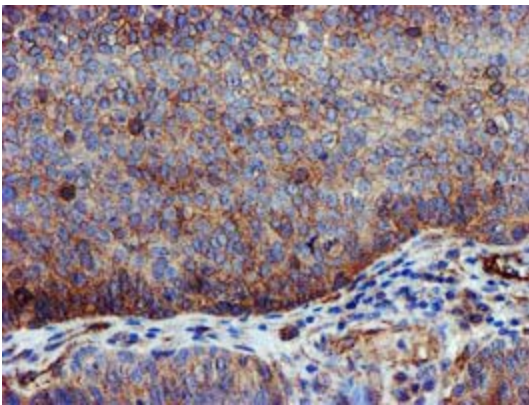
Immunohistochemical staining of paraffin-embedded Human endometrium tissue within the normal limits using anti-EPN2 mouse monoclonal antibody. (Heat-induced epitope retrieval by 10mM citric buffer, pH6.0, 100°C for 10min, [TA504300])



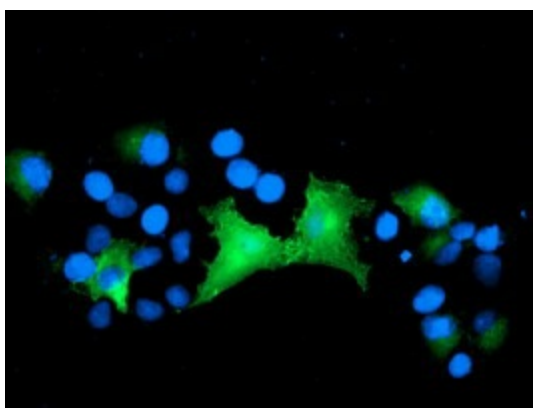
Immunohistochemical staining of paraffin-embedded Adenocarcinoma of Human endometrium tissue using anti-EPN2 mouse monoclonal antibody. (Heat-induced epitope retrieval by 10mM citric buffer, pH6.0, 100°C for 10min, [TA504300])



Immunohistochemical staining of paraffin-embedded Carcinoma of Human prostate tissue using anti-EPN2 mouse monoclonal antibody. (Heat-induced epitope retrieval by 10mM citric buffer, pH6.0, 100°C for 10min, [TA504300])



Immunohistochemical staining of paraffin-embedded Carcinoma of Human bladder tissue using anti-EPN2 mouse monoclonal antibody. (Heat-induced epitope retrieval by 10mM citric buffer, pH6.0, 100°C for 10min, [TA504300])



Anti-EPN2 mouse monoclonal antibody ([TA504300]) immunofluorescent staining of COS7 cells transiently transfected by pCMV6-ENTRY EPN2 ([RC213652]).