

Product datasheet for **TA504300**

Epsin 2 (EPN2) Mouse Monoclonal Antibody [Clone ID: OTI1C5]

Product data:

Product Type:	Primary Antibodies
Clone Name:	OTI1C5
Applications:	IF, IHC, WB
Recommended Dilution:	WB 1:500~2000, IHC 1:150, IF 1:100
Reactivity:	Human, Monkey, Mouse, Rat
Host:	Mouse
Isotype:	IgG1
Clonality:	Monoclonal
Immunogen:	Full length human recombinant protein of human EPN2(NP_055779) produced in HEK293T cell.
Formulation:	PBS (pH 7.3) containing 1% BSA, 50% glycerol and 0.02% sodium azide.
Concentration:	0.93 mg/ml
Purification:	Purified from mouse ascites fluids or tissue culture supernatant by affinity chromatography (protein A/G)
Conjugation:	Unconjugated
Storage:	Store at -20°C as received.
Stability:	Stable for 12 months from date of receipt.
Predicted Protein Size:	68.3 kDa
Gene Name:	epsin 2
Database Link:	NP_055779 Entrez Gene 13855 Mouse Entrez Gene 60443 Rat Entrez Gene 702600 Monkey Entrez Gene 22905 Human O95208
Background:	This gene encodes a protein which interacts with clathrin and adaptor-related protein complex 2, alpha 1 subunit. The protein is found in a brain-derived clathrin-coated vesicle fraction and localizes to the peri-Golgi region and the cell periphery. The protein is thought to be involved in clathrin-mediated endocytosis. Alternate splicing of this gene results in multiple transcript variants encoding different isoforms. [provided by RefSeq]

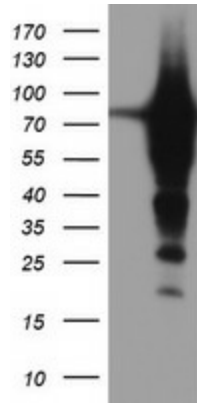


[View online »](#)

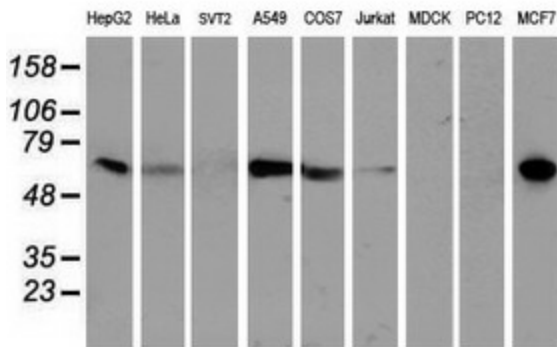
Synonyms: EHB21

Protein Pathways: Endocytosis

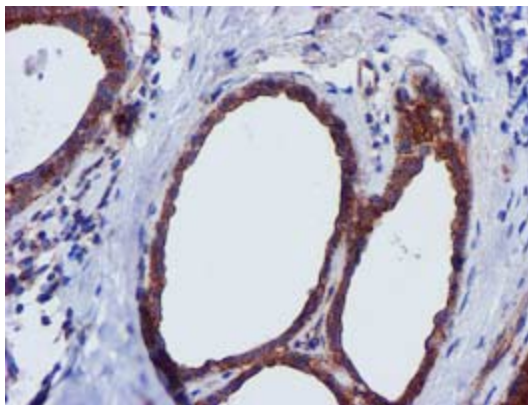
Product images:



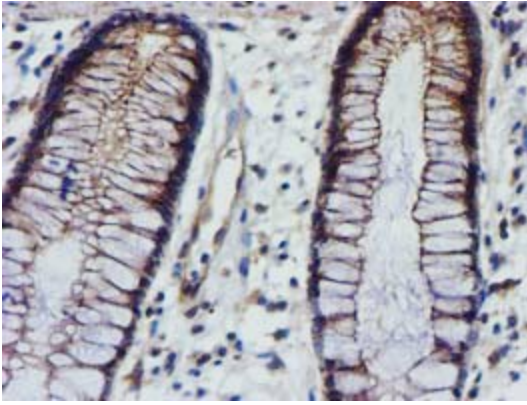
HEK293T cells were transfected with the pCMV6-ENTRY control (Left lane) or pCMV6-ENTRY EPN2 ([RC213652], Right lane) cDNA for 48 hrs and lysed. Equivalent amounts of cell lysates (5 ug per lane) were separated by SDS-PAGE and immunoblotted with anti-EPN2.



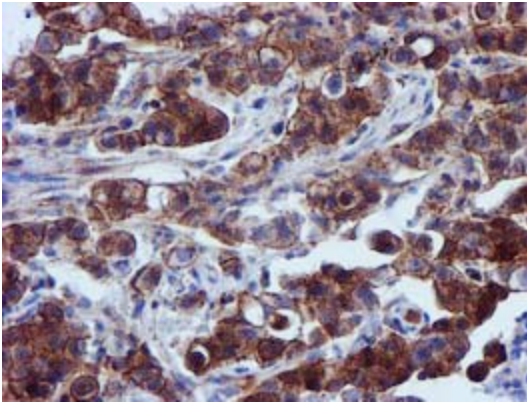
Western blot analysis of extracts (35ug) from 9 different cell lines by using anti-EPN2 monoclonal antibody.



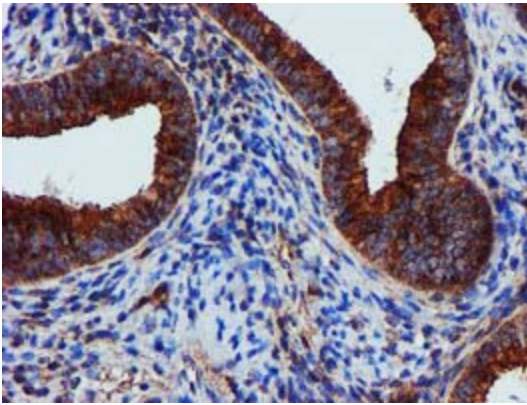
Immunohistochemical staining of paraffin-embedded Human breast tissue within the normal limits using anti-EPN2 mouse monoclonal antibody. (Heat-induced epitope retrieval by 10mM citric buffer, pH6.0, 100°C for 10min, TA504300)



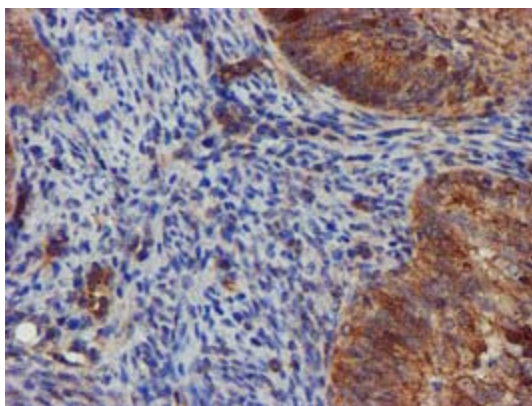
Immunohistochemical staining of paraffin-embedded Human colon tissue within the normal limits using anti-EPN2 mouse monoclonal antibody. (Heat-induced epitope retrieval by 10mM citric buffer, pH6.0, 100°C for 10min, TA504300)



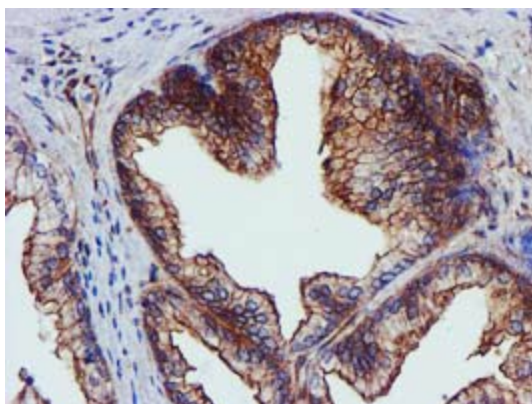
Immunohistochemical staining of paraffin-embedded Carcinoma of Human lung tissue using anti-EPN2 mouse monoclonal antibody. (Heat-induced epitope retrieval by 10mM citric buffer, pH6.0, 100°C for 10min, TA504300)



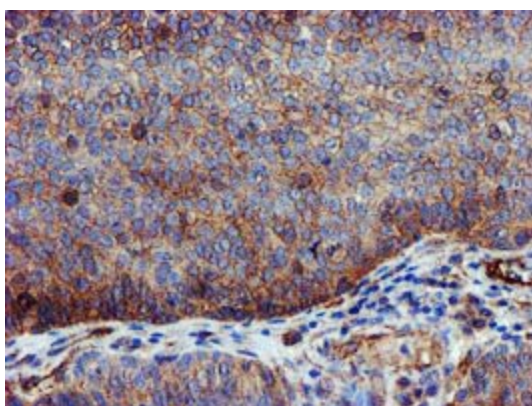
Immunohistochemical staining of paraffin-embedded Human endometrium tissue within the normal limits using anti-EPN2 mouse monoclonal antibody. (Heat-induced epitope retrieval by 10mM citric buffer, pH6.0, 100°C for 10min, TA504300)



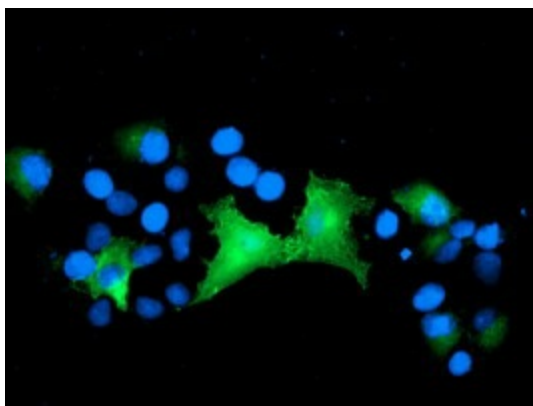
Immunohistochemical staining of paraffin-embedded Adenocarcinoma of Human endometrium tissue using anti-EPN2 mouse monoclonal antibody. (Heat-induced epitope retrieval by 10mM citric buffer, pH6.0, 100°C for 10min, TA504300)



Immunohistochemical staining of paraffin-embedded Carcinoma of Human prostate tissue using anti-EPN2 mouse monoclonal antibody. (Heat-induced epitope retrieval by 10mM citric buffer, pH6.0, 100°C for 10min, TA504300)



Immunohistochemical staining of paraffin-embedded Carcinoma of Human bladder tissue using anti-EPN2 mouse monoclonal antibody. (Heat-induced epitope retrieval by 10mM citric buffer, pH6.0, 100°C for 10min, TA504300)



Anti-EPN2 mouse monoclonal antibody (TA504300) immunofluorescent staining of COS7 cells transiently transfected by pCMV6-ENTRY EPN2 ([RC213652]).