

Product datasheet for **TA504289S**

PGP9.5 (UCHL1) Mouse Monoclonal Antibody [Clone ID: OTI2B5]

Product data:

Product Type:	Primary Antibodies
Clone Name:	OTI2B5
Applications:	FC, IHC, WB
Recommended Dilution:	WB 1:500~2000, IHC 1:50, FLOW 1:100
Reactivity:	Human, Rat, Monkey, Mouse
Host:	Mouse
Isotype:	IgG1
Clonality:	Monoclonal
Immunogen:	Full length human recombinant protein of human UCHL1(NP_004172) produced in HEK293T cell.
Formulation:	PBS (pH 7.3) containing 1% BSA, 50% glycerol and 0.02% sodium azide.
Concentration:	1 mg/ml
Purification:	Purified from mouse ascites fluids or tissue culture supernatant by affinity chromatography (protein A/G)
Conjugation:	Unconjugated
Storage:	Store at -20°C as received.
Stability:	Stable for 12 months from date of receipt.
Predicted Protein Size:	24.6 kDa
Gene Name:	ubiquitin C-terminal hydrolase L1
Database Link:	NP_004172 Entrez Gene 22223 Mouse Entrez Gene 29545 Rat Entrez Gene 701579 Monkey Entrez Gene 7345 Human P09936
Background:	The protein encoded by this gene belongs to the peptidase C12 family. This enzyme is a thiol protease that hydrolyzes a peptide bond at the C-terminal glycine of ubiquitin. This gene is specifically expressed in the neurons and in cells of the diffuse neuroendocrine system. Mutations in this gene may be associated with Parkinson disease. [provided by RefSeq, Sep 2009]



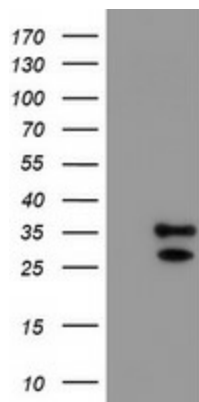
[View online »](#)

Synonyms: HEL-117; NDGOA; PARK5; PGP 9.5; PGP9.5; PGP95; Uch-L1

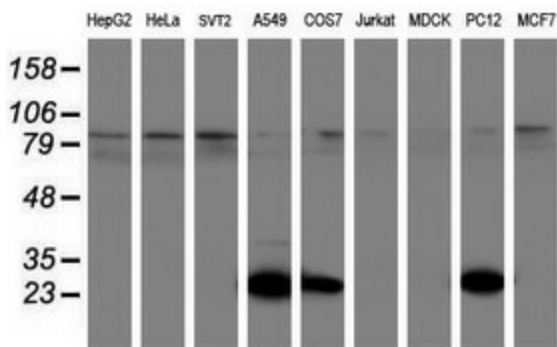
Protein Families: Druggable Genome, Protease

Protein Pathways: Parkinson's disease

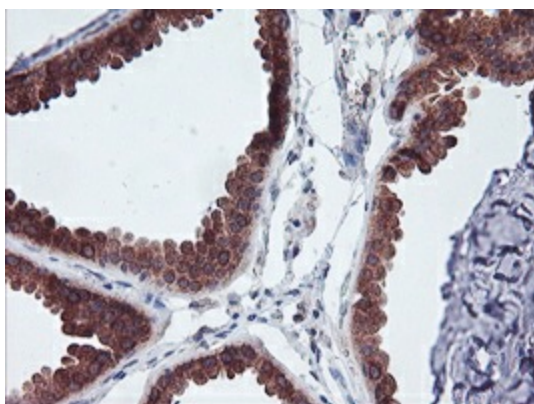
Product images:



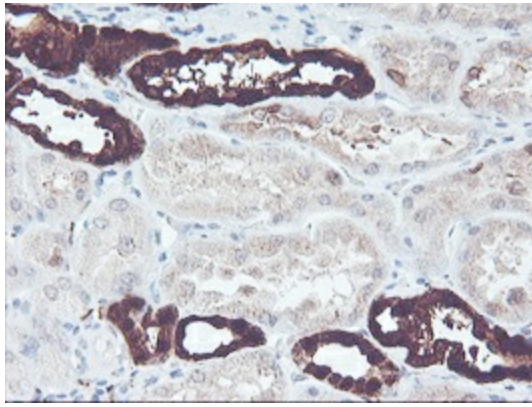
HEK293T cells were transfected with the pCMV6-ENTRY control (Cat# [PS100001], Left lane) or pCMV6-ENTRY UCHL1 (Cat# [RC201803], Right lane) cDNA for 48 hrs and lysed. Equivalent amounts of cell lysates (5 ug per lane) were separated by SDS-PAGE and immunoblotted with anti-UCHL1 (Cat# [TA504289]). Positive lysates [LY401345] (100ug) and [LC401345] (20ug) can be purchased separately from OriGene.



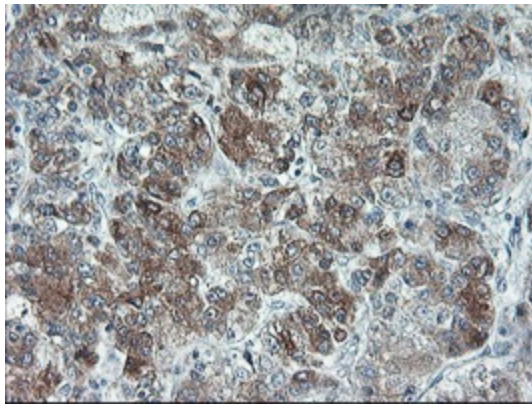
Western blot analysis of extracts (35ug) from 9 different cell lines by using anti-UCHL1 monoclonal antibody (HepG2: human; HeLa: human; SVT2: mouse; A549: human; COS7: monkey; Jurkat: human; MDCK: canine; PC12: rat; MCF7: human).



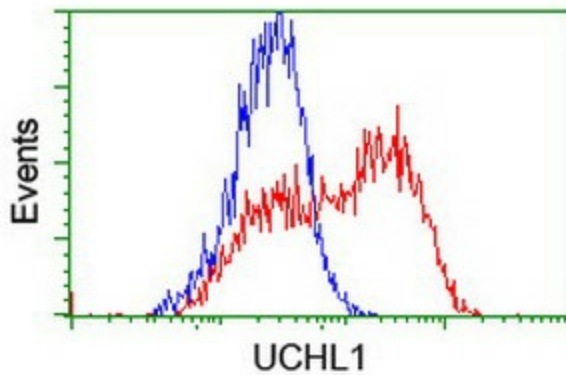
Immunohistochemical staining of paraffin-embedded Human breast tissue within the normal limits using anti-UCHL1 mouse monoclonal antibody. (Heat-induced epitope retrieval by 10mM citric buffer, pH6.0, 100°C for 10min, [TA504289])



Immunohistochemical staining of paraffin-embedded Human Kidney tissue within the normal limits using anti-UCLH1 mouse monoclonal antibody. (Heat-induced epitope retrieval by 10mM citric buffer, pH6.0, 100°C for 10min, [TA504289])



Immunohistochemical staining of paraffin-embedded Carcinoma of Human liver tissue using anti-UCLH1 mouse monoclonal antibody. (Heat-induced epitope retrieval by 10mM citric buffer, pH6.0, 100°C for 10min, [TA504289])



HEK293T cells transfected with either [RC201803] overexpress plasmid (Red) or empty vector control plasmid (Blue) were immunostained by anti-UCLH1 antibody ([TA504289]), and then analyzed by flow cytometry.