

Product datasheet for **TA504279AM**

Pallidin (BLOC1S6) Mouse Monoclonal Antibody (Biotin conjugated) [Clone ID: OTI1H9]

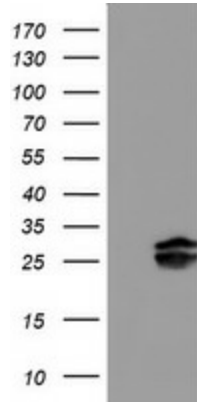
Product data:

| | |
|-------------------------|---|
| Product Type: | Primary Antibodies |
| Clone Name: | OTI1H9 |
| Applications: | FC, IHC, WB |
| Recommended Dilution: | WB 1:500~2000, IHC 1:150, FLOW 1:100 |
| Reactivity: | Human, Mouse, Rat |
| Host: | Mouse |
| Isotype: | IgG1 |
| Clonality: | Monoclonal |
| Immunogen: | Full length human recombinant protein of human PLDN(NP_036520) produced in HEK293T cell. |
| Formulation: | PBS (pH 7.3) containing 1% BSA, 50% glycerol and 0.02% sodium azide. |
| Concentration: | 0.5 mg/ml |
| Purification: | Purified from mouse ascites fluids or tissue culture supernatant by affinity chromatography (protein A/G) |
| Conjugation: | Biotin |
| Storage: | Store at -20°C as received. |
| Stability: | Stable for 12 months from date of receipt. |
| Predicted Protein Size: | 19.6 kDa |
| Gene Name: | biogenesis of lysosomal organelles complex 1 subunit 6 |
| Database Link: | NP_036520 Entrez Gene 18457 Mouse Entrez Gene 317630 Rat Entrez Gene 26258 Human Q9UL45 |
| Background: | The protein encoded by this gene may play a role in intracellular vesicle trafficking. It interacts with Syntaxin 13 which mediates intracellular membrane fusion. Several alternatively spliced transcript variants of this gene have been described, but the full-length nature of some of these variants has not been determined. [provided by RefSeq] |
| Synonyms: | BLOS6; HPS9; PA; PALLID; PLDN |

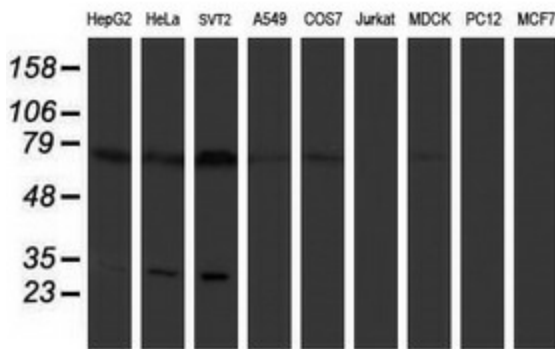


[View online »](#)

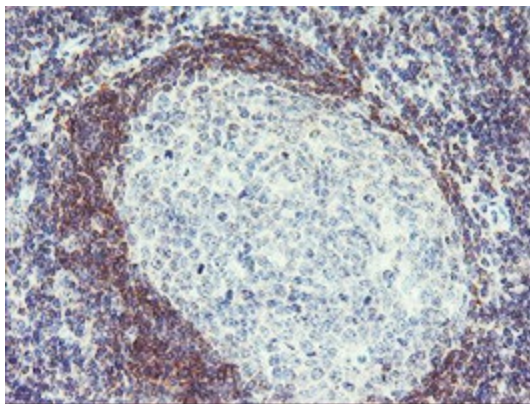
Product images:



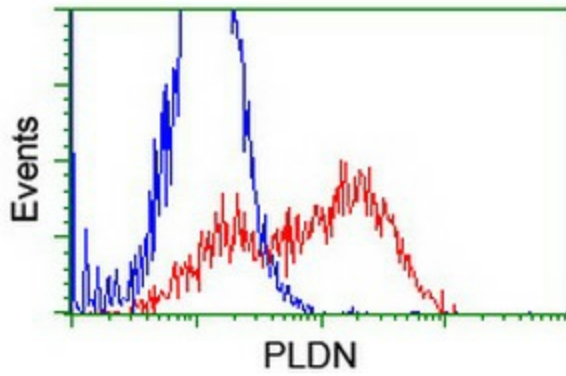
HEK293T cells were transfected with the pCMV6-ENTRY control (Cat# [PS100001], Left lane) or pCMV6-ENTRY PLDN (Cat# [RC201514], Right lane) cDNA for 48 hrs and lysed. Equivalent amounts of cell lysates (5 ug per lane) were separated by SDS-PAGE and immunoblotted with anti-PLDN (Cat# [TA504279]). Positive lysates [LY402203] (100ug) and [LC402203] (20ug) can be purchased separately from OriGene.



Western blot analysis of extracts (35ug) from 9 different cell lines by using anti-PLDN monoclonal antibody.



Immunohistochemical staining of paraffin-embedded Human tonsil within the normal limits using anti-PLDN mouse monoclonal antibody. (Heat-induced epitope retrieval by 10mM citric buffer, pH6.0, 100°C for 10min, [TA504279])



HEK293T cells transfected with either [RC201514] overexpress plasmid (Red) or empty vector control plasmid (Blue) were immunostained by anti-PLDN antibody ([TA504279]), and then analyzed by flow cytometry.