

Product datasheet for **TA504277S**

Iduronate 2 sulfatase (IDS) Mouse Monoclonal Antibody [Clone ID: OTI4G2]

Product data:

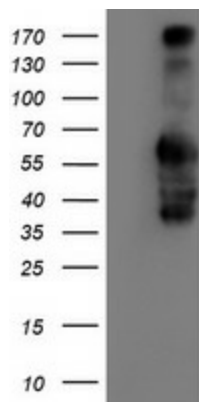
Product Type:	Primary Antibodies
Clone Name:	OTI4G2
Applications:	FC, IF, IHC, WB
Recommended Dilution:	WB 1:500~2000, IHC 1:150, IF 1:100, FLOW 1:100
Reactivity:	Human, Dog, Rat, Monkey, Mouse
Host:	Mouse
Isotype:	IgG2a
Clonality:	Monoclonal
Immunogen:	Full length human recombinant protein of human IDS(NP_000193) produced in HEK293T cell.
Formulation:	PBS (pH 7.3) containing 1% BSA, 50% glycerol and 0.02% sodium azide.
Concentration:	0.71 mg/ml
Purification:	Purified from mouse ascites fluids or tissue culture supernatant by affinity chromatography (protein A/G)
Conjugation:	Unconjugated
Storage:	Store at -20°C as received.
Stability:	Stable for 12 months from date of receipt.
Predicted Protein Size:	59.2 kDa
Gene Name:	iduronate 2-sulfatase
Database Link:	NP_000193 Entrez Gene 15931 Mouse Entrez Gene 363513 Rat Entrez Gene 492194 Dog Entrez Gene 700892 Monkey Entrez Gene 3423 Human P22304

Background: Iduronate-2-sulfatase is required for the lysosomal degradation of heparan sulfate and dermatan sulfate. Mutations in this X-chromosome gene that result in enzymatic deficiency lead to the sex-linked Mucopolysaccharidosis Type II, also known as Hunter Syndrome. Iduronate-2-sulfatase has a strong sequence similarity with human arylsulfatases A, B, and C, and human glucosamine-6-sulfatase. Multiple alternatively spliced transcript variants that encode different protein isoforms have been described. [provided by RefSeq]

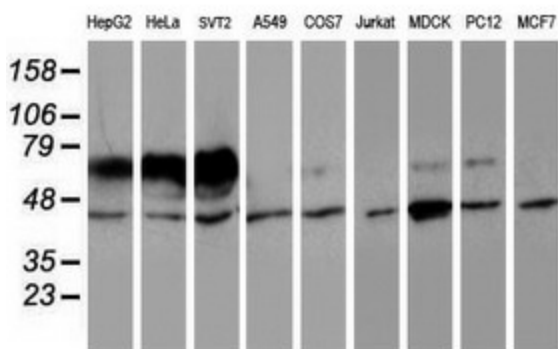


[View online »](#)

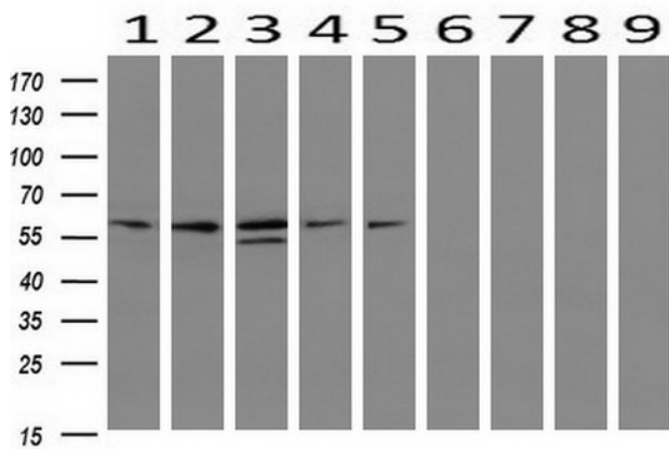
Synonyms: MPS2; SIDS
Protein Families: Druggable Genome
Protein Pathways: Glycosaminoglycan degradation, Lysosome, Metabolic pathways

Product images:


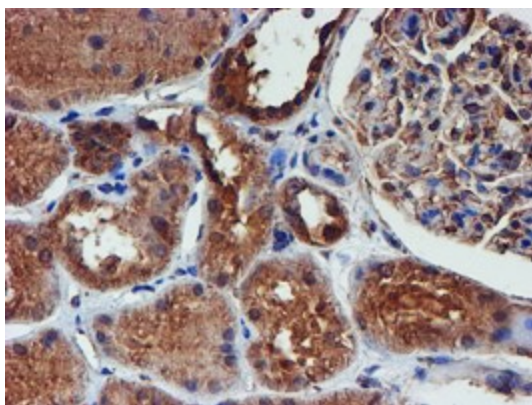
HEK293T cells were transfected with the pCMV6-ENTRY control (Cat# [PS100001], Left lane) or pCMV6-ENTRY IDS (Cat# [RC219187], Right lane) cDNA for 48 hrs and lysed. Equivalent amounts of cell lysates (5 ug per lane) were separated by SDS-PAGE and immunoblotted with anti-IDS (Cat# [TA504277]). Positive lysates [LY424863] (100ug) and [LC424863] (20ug) can be purchased separately from OriGene.



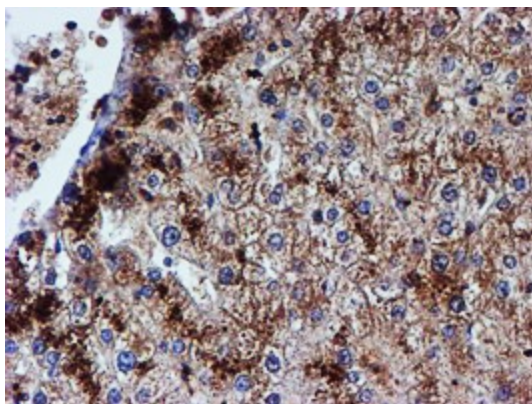
Western blot analysis of extracts (35ug) from 9 different cell lines by using anti-IDS monoclonal antibody.



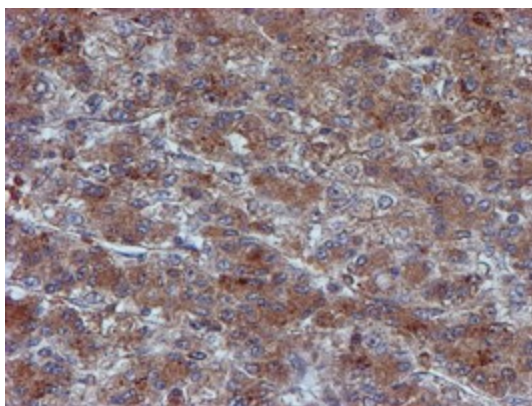
Western blot analysis of extracts (10ug) from 9 Human tissue by using anti-IDS monoclonal antibody at 1:200 (1: Testis; 2: Omentum; 3: Uterus; 4: Breast; 5: Brain; 6: Liver; 7: Ovary; 8: Thyroid gland; 9: Colon).



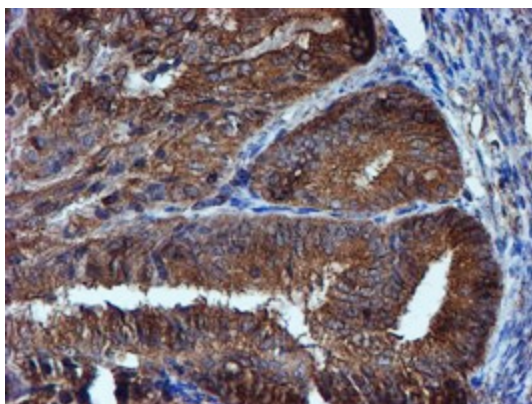
Immunohistochemical staining of paraffin-embedded Human Kidney tissue within the normal limits using anti-IDS mouse monoclonal antibody. (Heat-induced epitope retrieval by 10mM citric buffer, pH6.0, 100°C for 10min, [TA504277])



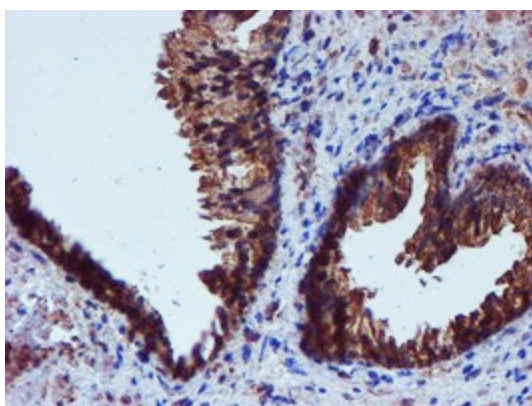
Immunohistochemical staining of paraffin-embedded Human liver tissue within the normal limits using anti-IDS mouse monoclonal antibody. (Heat-induced epitope retrieval by 10mM citric buffer, pH6.0, 100°C for 10min, [TA504277])



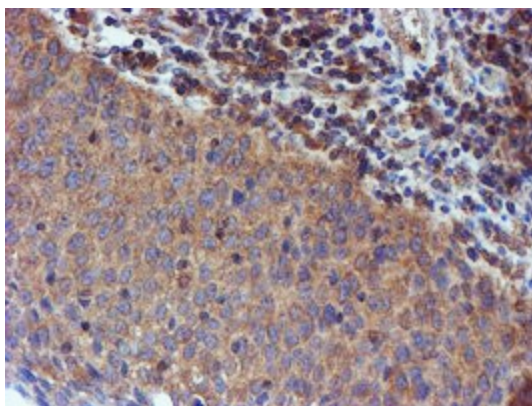
Immunohistochemical staining of paraffin-embedded Carcinoma of Human liver tissue using anti-IDS mouse monoclonal antibody. (Heat-induced epitope retrieval by 10mM citric buffer, pH6.0, 100°C for 10min, [TA504277])



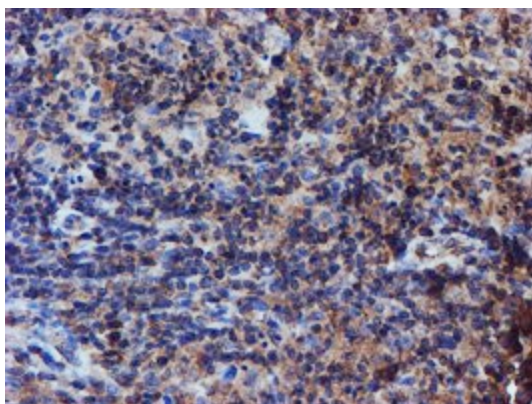
Immunohistochemical staining of paraffin-embedded Adenocarcinoma of Human endometrium tissue using anti-IDS mouse monoclonal antibody. (Heat-induced epitope retrieval by 10mM citric buffer, pH6.0, 100°C for 10min, [TA504277])



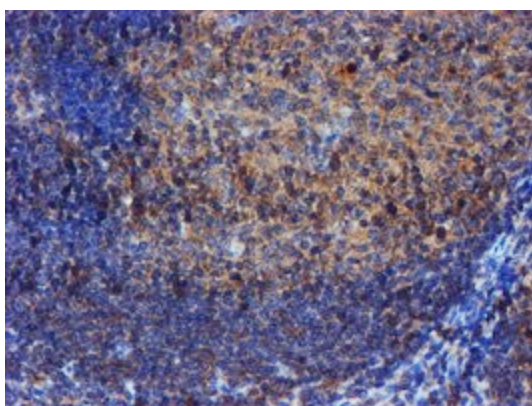
Immunohistochemical staining of paraffin-embedded Human prostate tissue within the normal limits using anti-IDS mouse monoclonal antibody. (Heat-induced epitope retrieval by 10mM citric buffer, pH6.0, 100°C for 10min, [TA504277])



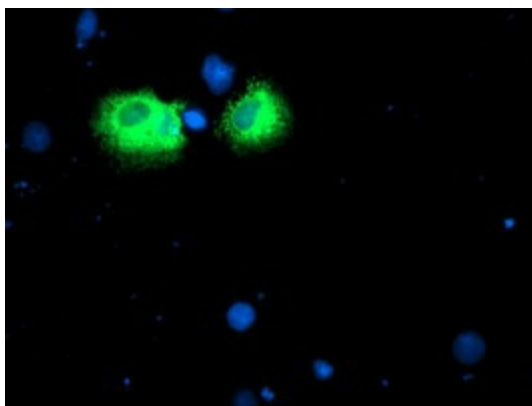
Immunohistochemical staining of paraffin-embedded Carcinoma of Human bladder tissue using anti-IDS mouse monoclonal antibody. (Heat-induced epitope retrieval by 10mM citric buffer, pH6.0, 100°C for 10min, [TA504277])



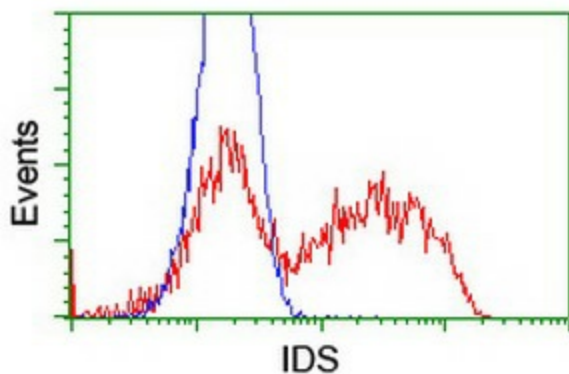
Immunohistochemical staining of paraffin-embedded Human lymphoma tissue using anti-IDS mouse monoclonal antibody. (Heat-induced epitope retrieval by 10mM citric buffer, pH6.0, 100°C for 10min, [TA504277])



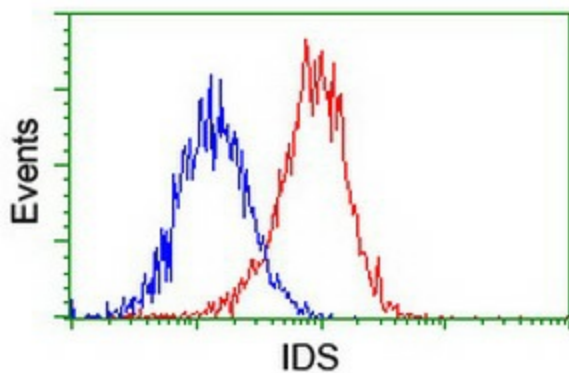
Immunohistochemical staining of paraffin-embedded Human tonsil within the normal limits using anti-IDS mouse monoclonal antibody. (Heat-induced epitope retrieval by 10mM citric buffer, pH6.0, 100°C for 10min, [TA504277])



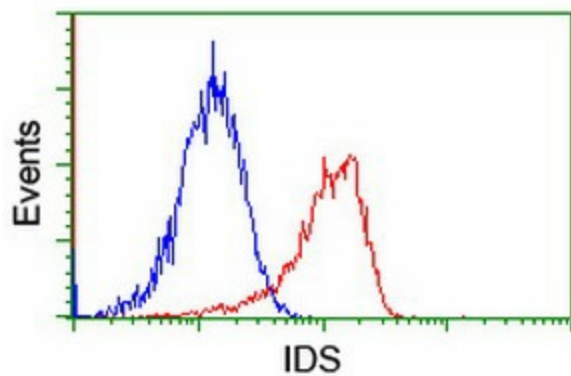
Anti-IDS mouse monoclonal antibody ([TA504277]) immunofluorescent staining of COS7 cells transiently transfected by pCMV6-ENTRY IDS ([RC219187]).



HEK293T cells transfected with either [RC219187] overexpress plasmid (Red) or empty vector control plasmid (Blue) were immunostained by anti-IDS antibody ([TA504277]), and then analyzed by flow cytometry.



Flow cytometric Analysis of HeLa cells, using anti-IDS antibody ([TA504277]), (Red), compared to a nonspecific negative control antibody, (Blue).



Flow cytometric Analysis of Jurkat cells, using anti-IDS antibody ([TA504277]), (Red), compared to a nonspecific negative control antibody, (Blue).