

Product datasheet for **TA504259S**

Cystatin SA (CST2) Mouse Monoclonal Antibody [Clone ID: OTI1D6]

Product data:

Product Type:	Primary Antibodies
Clone Name:	OTI1D6
Applications:	IHC, WB
Recommended Dilution:	WB 1:2000, IHC 1:150
Reactivity:	Human
Host:	Mouse
Isotype:	IgG1
Clonality:	Monoclonal
Immunogen:	Full length human recombinant protein of human CST2(NP_001313) produced in HEK293T cell.
Formulation:	PBS (pH 7.3) containing 1% BSA, 50% glycerol and 0.02% sodium azide.
Concentration:	0.57 mg/ml
Purification:	Purified from mouse ascites fluids or tissue culture supernatant by affinity chromatography (protein A/G)
Conjugation:	Unconjugated
Storage:	Store at -20°C as received.
Stability:	Stable for 12 months from date of receipt.
Predicted Protein Size:	14.3 kDa
Gene Name:	cystatin SA
Database Link:	NP_001313 Entrez Gene 1470 Human P09228



[View online »](#)

Background:

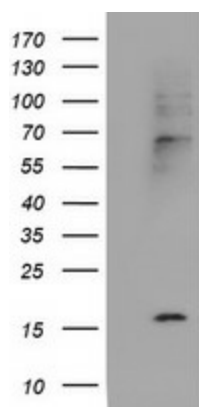
The cystatin superfamily encompasses proteins that contain multiple cystatin-like sequences. Some of the members are active cysteine protease inhibitors, while others have lost or perhaps never acquired this inhibitory activity. There are three inhibitory families in the superfamily, including the type 1 cystatins (stefins), type 2 cystatins and the kininogens. The type 2 cystatin proteins are a class of cysteine proteinase inhibitors found in a variety of human fluids and secretions, where they appear to provide protective functions. The cystatin locus on chromosome 20 contains the majority of the type 2 cystatin genes and pseudogenes. This gene is located in the cystatin locus and encodes a secreted thiol protease inhibitor found at high levels in saliva, tears and seminal plasma. [provided by RefSeq]

Synonyms:

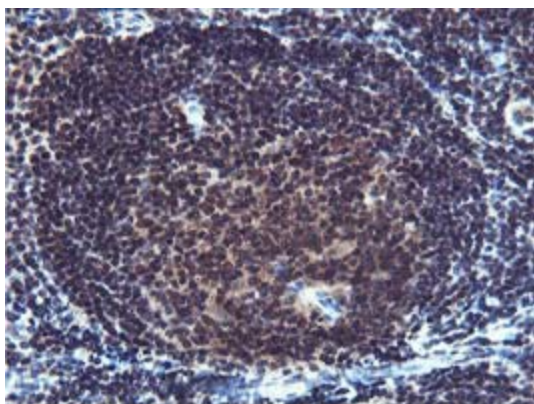
MGC71924

Protein Families:

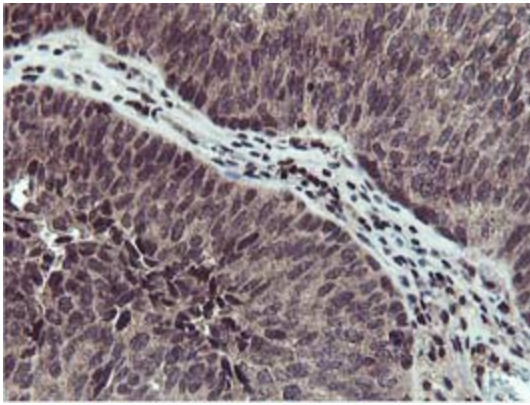
Secreted Protein

Product images:

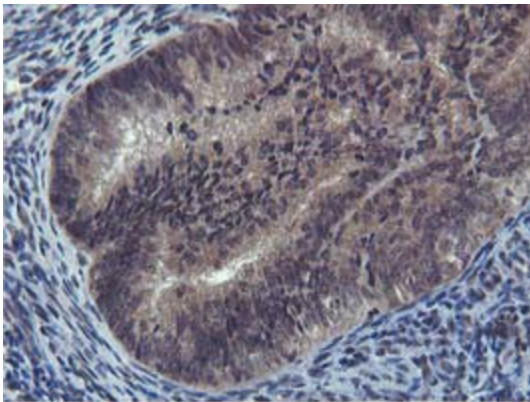
HEK293T cells were transfected with the pCMV6-ENTRY control (Cat# [PS100001], Left lane) or pCMV6-ENTRY CST2 (Cat# [RC209350], Right lane) cDNA for 48 hrs and lysed. Equivalent amounts of cell lysates (5 ug per lane) were separated by SDS-PAGE and immunoblotted with anti-CST2 (Cat# [TA504259]). Positive lysates [LY420010] (100ug) and [LC420010] (20ug) can be purchased separately from OriGene.



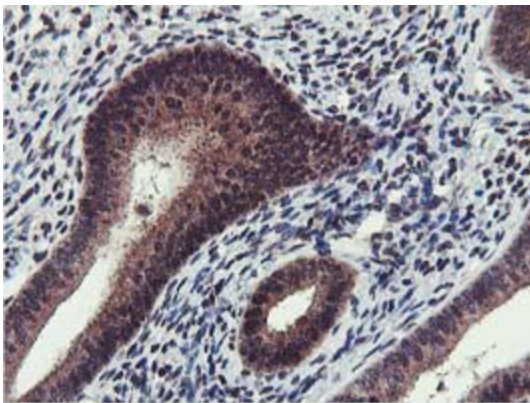
Immunohistochemical staining of paraffin-embedded Human tonsil within the normal limits using anti-CST2 mouse monoclonal antibody. (Heat-induced epitope retrieval by 10mM citric buffer, pH6.0, 100°C for 10min, [TA504259])



Immunohistochemical staining of paraffin-embedded Carcinoma of Human bladder tissue using anti-CST2 mouse monoclonal antibody. (Heat-induced epitope retrieval by 10mM citric buffer, pH6.0, 100°C for 10min, [TA504259])



Immunohistochemical staining of paraffin-embedded Adenocarcinoma of Human endometrium tissue using anti-CST2 mouse monoclonal antibody. (Heat-induced epitope retrieval by 10mM citric buffer, pH6.0, 100°C for 10min, [TA504259])



Immunohistochemical staining of paraffin-embedded Human endometrium tissue within the normal limits using anti-CST2 mouse monoclonal antibody. (Heat-induced epitope retrieval by 10mM citric buffer, pH6.0, 100°C for 10min, [TA504259])