

## Product datasheet for **TA504253S**

### TULP3 Mouse Monoclonal Antibody [Clone ID: OTI6C7]

#### Product data:

Product Type:	Primary Antibodies
Clone Name:	OTI6C7
Applications:	FC, WB
Recommended Dilution:	WB 1:1000, FLOW 1:100
Reactivity:	Human
Host:	Mouse
Isotype:	IgG1
Clonality:	Monoclonal
Immunogen:	Full length human recombinant protein of human TULP3(NP_003315) produced in HEK293T cell.
Formulation:	PBS (pH 7.3) containing 1% BSA, 50% glycerol and 0.02% sodium azide.
Concentration:	0.61 mg/ml
Purification:	Purified from mouse ascites fluids or tissue culture supernatant by affinity chromatography (protein A/G)
Conjugation:	Unconjugated
Storage:	Store at -20°C as received.
Stability:	Stable for 12 months from date of receipt.
Predicted Protein Size:	49.5 kDa
Gene Name:	TUB like protein 3
Database Link:	<a href="#">NP_003315</a> <a href="#">Entrez Gene 7289 Human</a> <a href="#">O75386</a>



[View online »](#)

**Background:**

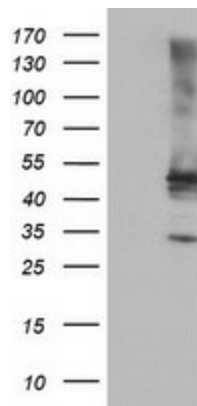
This gene encodes a member of the tubby gene family of bipartite transcription factors. Members of this family have been identified in plants, vertebrates, and invertebrates, and they share a conserved N-terminal transcription activation region and a conserved C-terminal DNA and phosphatidylinositol-phosphate binding region. The encoded protein binds to phosphoinositides in the plasma membrane via its C-terminal region and probably functions as a membrane-bound transcription regulator that translocates to the nucleus in response to phosphoinositide hydrolysis, for instance, induced by G-protein-coupled-receptor signaling. It plays an important role in neuronal development and function. Two transcript variants encoding distinct isoforms have been identified for this gene. [provided by RefSeq]

**Synonyms:**

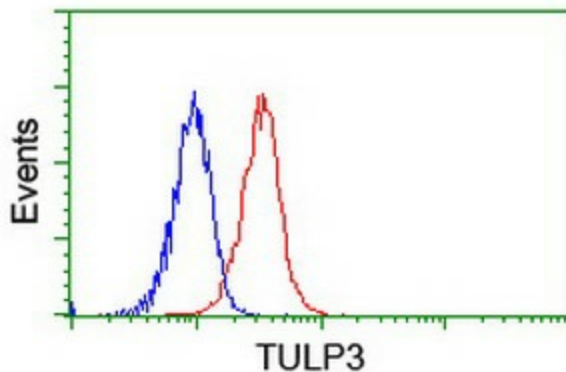
TUBL3

**Protein Families:**

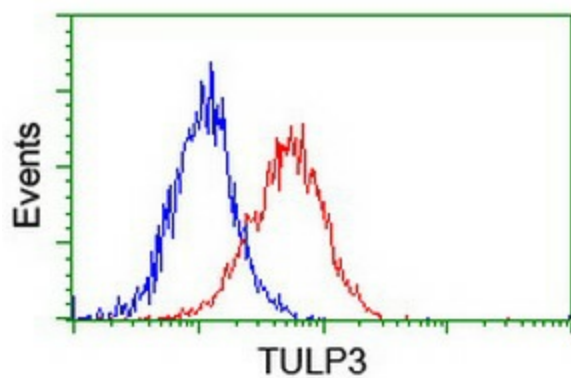
Druggable Genome, Transcription Factors

**Product images:**

HEK293T cells were transfected with the pCMV6-ENTRY control (Left lane) or pCMV6-ENTRY TULP3 ([RC207595], Right lane) cDNA for 48 hrs and lysed. Equivalent amounts of cell lysates (5 ug per lane) were separated by SDS-PAGE and immunoblotted with anti-TULP3. Positive lysates [LY418767] (100ug) and [LC418767] (20ug) can be purchased separately from OriGene.



Flow cytometric Analysis of Jurkat cells, using anti-TULP3 antibody ([TA504253]), (Red), compared to a nonspecific negative control antibody, (Blue).



Flow cytometric Analysis of HeLa cells, using anti-TULP3 antibody ([TA504253]), (Red), compared to a nonspecific negative control antibody, (Blue).