

## Product datasheet for **TA504250S**

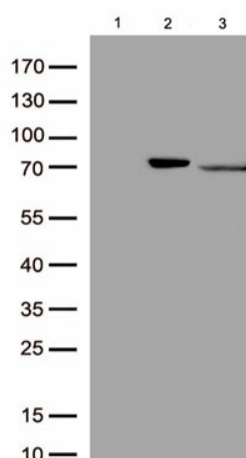
### **ALOX15 Mouse Monoclonal Antibody [Clone ID: OTI3G8]**

#### **Product data:**

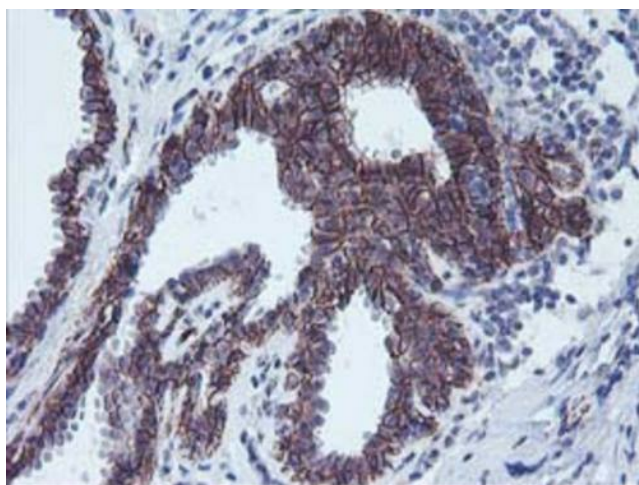
<b>Product Type:</b>	Primary Antibodies
<b>Clone Name:</b>	OTI3G8
<b>Applications:</b>	IF, IHC, WB
<b>Recommended Dilution:</b>	WB 1:500~2000, IHC 1:150, IF 1:100
<b>Reactivity:</b>	Human, Rat, Monkey
<b>Host:</b>	Mouse
<b>Isotype:</b>	IgG2b
<b>Clonality:</b>	Monoclonal
<b>Immunogen:</b>	Full length human recombinant protein of human ALOX15(NP_001131) produced in HEK293T cell.
<b>Formulation:</b>	PBS (pH 7.3) containing 1% BSA, 50% glycerol and 0.02% sodium azide.
<b>Concentration:</b>	1 mg/ml
<b>Purification:</b>	Purified from mouse ascites fluids or tissue culture supernatant by affinity chromatography (protein A/G)
<b>Conjugation:</b>	Unconjugated
<b>Storage:</b>	Store at -20°C as received.
<b>Stability:</b>	Stable for 12 months from date of receipt.
<b>Predicted Protein Size:</b>	74.6 kDa
<b>Gene Name:</b>	arachidonate 15-lipoxygenase
<b>Database Link:</b>	<a href="#">NP_001131</a> <a href="#">Entrez Gene 81639 Rat</a> <a href="#">Entrez Gene 709212 Monkey</a> <a href="#">Entrez Gene 246 Human</a> <a href="#">P16050</a>
<b>Synonyms:</b>	12-LOX; 15-LOX-1; 15LOX-1
<b>Protein Families:</b>	Druggable Genome
<b>Protein Pathways:</b>	Arachidonic acid metabolism, Linoleic acid metabolism, Metabolic pathways



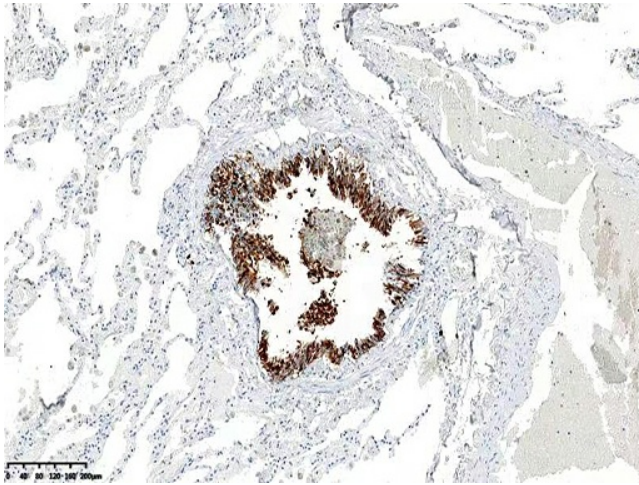
[View online »](#)

**Product images:**

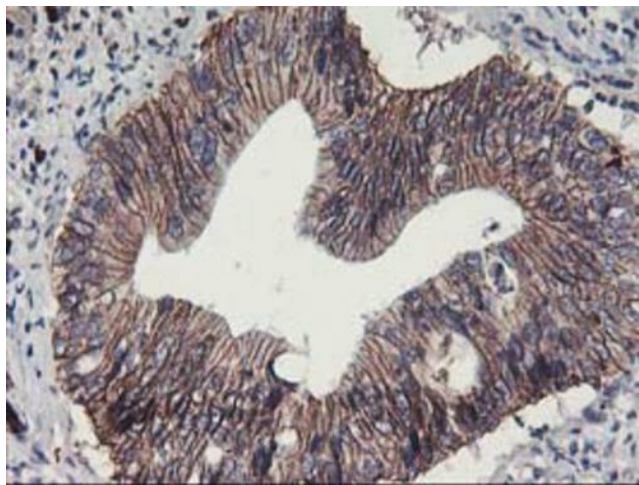
Western blot analysis of overexpressed lysates (15ug per lane) from HEK293T cells transfected with empty plasmid ([PS100001], lane 1), human ALOX15 plasmid ([RC206621], lane 2), mouse ALOX15 plasmid ([MR226258], lane 3) using anti-ALOX15 antibody [TA504250] (1:500).



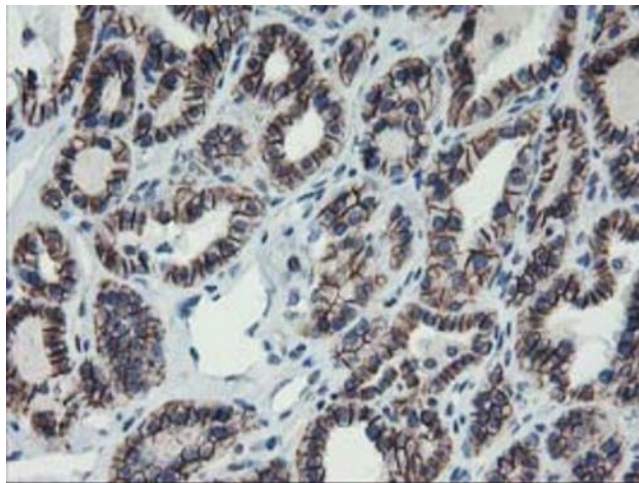
Immunohistochemical staining of paraffin-embedded Human breast tissue within the normal limits using anti-ALOX15 mouse monoclonal antibody. (Heat-induced epitope retrieval by 10mM citric buffer, pH6.0, 100°C for 10min, [TA504250])



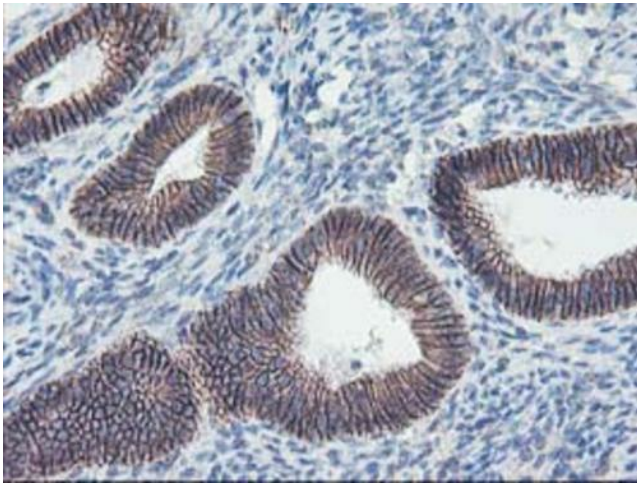
Immunohistochemical staining of paraffin-embedded human lung tissue within the normal limits using anti-ALOX15 mouse monoclonal antibody ([TA504250]). Heat-induced epitope retrieval by 1mM EDTA in 10mM Tris buffer (pH8.5) at 120°C for 3 minutes (1:150).



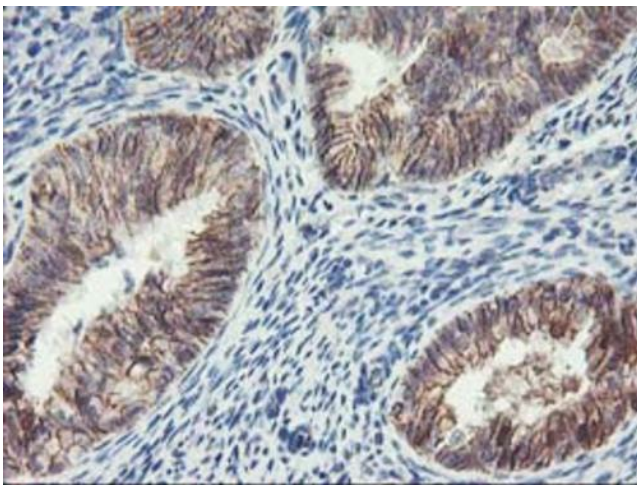
Immunohistochemical staining of paraffin-embedded Carcinoma of Human pancreas tissue using anti-ALOX15 mouse monoclonal antibody. (Heat-induced epitope retrieval by 10mM citric buffer, pH6.0, 100°C for 10min, [TA504250])



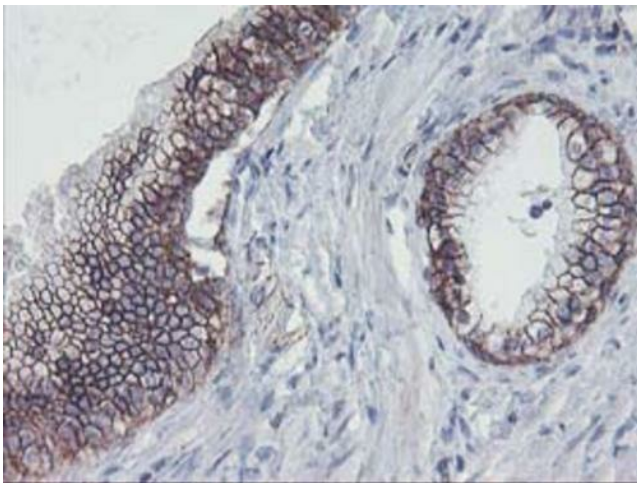
Immunohistochemical staining of paraffin-embedded Carcinoma of Human thyroid tissue using anti-ALOX15 mouse monoclonal antibody. (Heat-induced epitope retrieval by 10mM citric buffer, pH6.0, 100°C for 10min, [TA504250])



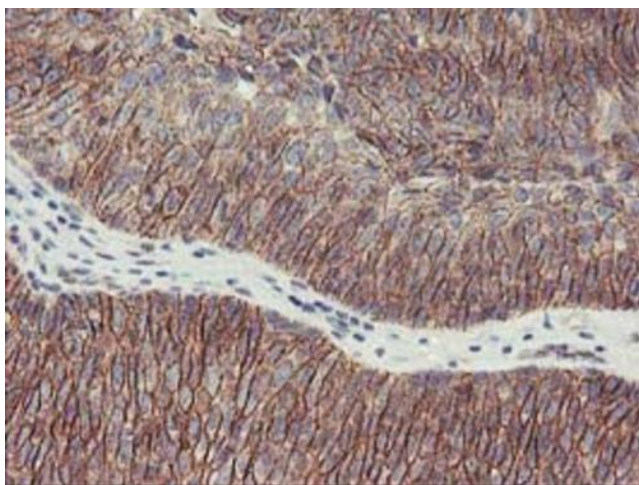
Immunohistochemical staining of paraffin-embedded Human endometrium tissue within the normal limits using anti-ALOX15 mouse monoclonal antibody. (Heat-induced epitope retrieval by 10mM citric buffer, pH6.0, 100°C for 10min, [TA504250])



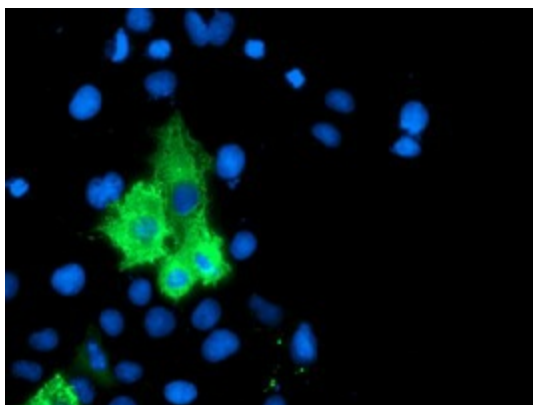
Immunohistochemical staining of paraffin-embedded Adenocarcinoma of Human endometrium tissue using anti-ALOX15 mouse monoclonal antibody. (Heat-induced epitope retrieval by 10mM citric buffer, pH6.0, 100°C for 10min, [TA504250])



Immunohistochemical staining of paraffin-embedded Carcinoma of Human prostate tissue using anti-ALOX15 mouse monoclonal antibody. (Heat-induced epitope retrieval by 10mM citric buffer, pH6.0, 100°C for 10min, [TA504250])



Immunohistochemical staining of paraffin-embedded Carcinoma of Human bladder tissue using anti-ALOX15 mouse monoclonal antibody. (Heat-induced epitope retrieval by 10mM citric buffer, pH6.0, 100°C for 10min, [TA504250])



Anti-ALOX15 mouse monoclonal antibody ([TA504250]) immunofluorescent staining of COS7 cells transiently transfected by pCMV6-ENTRY ALOX15 ([RC206621]).