

## Product datasheet for **TA504249S**

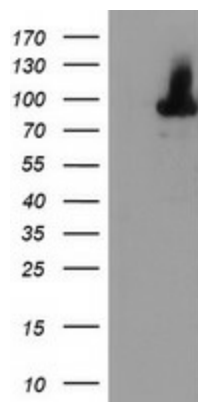
### **ALOX15 Mouse Monoclonal Antibody [Clone ID: OTI8C5]**

#### **Product data:**

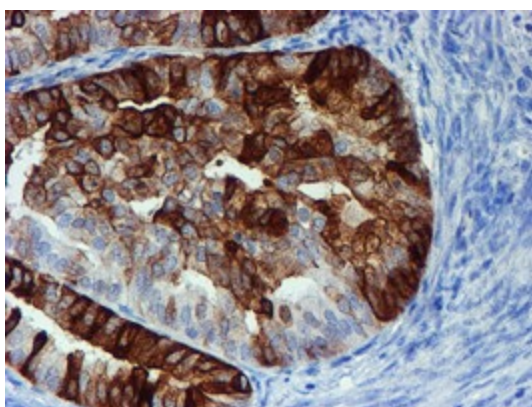
<b>Product Type:</b>	Primary Antibodies
<b>Clone Name:</b>	OTI8C5
<b>Applications:</b>	IHC, WB
<b>Recommended Dilution:</b>	WB 1:500
<b>Reactivity:</b>	Human
<b>Host:</b>	Mouse
<b>Isotype:</b>	IgG2a
<b>Clonality:</b>	Monoclonal
<b>Immunogen:</b>	Full length human recombinant protein of human ALOX15(NP_001131) produced in HEK293T cell.
<b>Formulation:</b>	PBS (pH 7.3) containing 1% BSA, 50% glycerol and 0.02% sodium azide.
<b>Concentration:</b>	1 mg/ml
<b>Purification:</b>	Purified from mouse ascites fluids or tissue culture supernatant by affinity chromatography (protein A/G)
<b>Conjugation:</b>	Unconjugated
<b>Storage:</b>	Store at -20°C as received.
<b>Stability:</b>	Stable for 12 months from date of receipt.
<b>Predicted Protein Size:</b>	74.6 kDa
<b>Gene Name:</b>	arachidonate 15-lipoxygenase
<b>Database Link:</b>	<a href="#">NP_001131</a> <a href="#">Entrez Gene 246 Human</a> <a href="#">P16050</a>
<b>Synonyms:</b>	12-LOX; 15-LOX-1; 15LOX-1
<b>Protein Families:</b>	Druggable Genome
<b>Protein Pathways:</b>	Arachidonic acid metabolism, Linoleic acid metabolism, Metabolic pathways



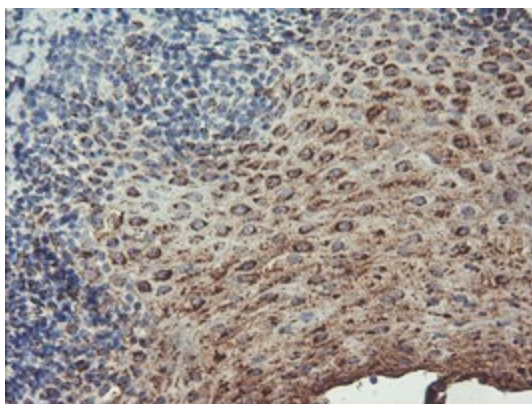
[View online »](#)

**Product images:**

HEK293T cells were transfected with the pCMV6-ENTRY control (Left lane) or pCMV6-ENTRY ALOX15 ([RC206621], Right lane) cDNA for 48 hrs and lysed. Equivalent amounts of cell lysates (5 ug per lane) were separated by SDS-PAGE and immunoblotted with anti-ALOX15. Positive lysates [LY400456] (100ug) and [LC400456] (20ug) can be purchased separately from OriGene.



Immunohistochemical staining of paraffin-embedded Adenocarcinoma of Human endometrium tissue using anti-ALOX15 mouse monoclonal antibody. ([TA504249])



Immunohistochemical staining of paraffin-embedded Human tonsil within the normal limits using anti-ALOX15 mouse monoclonal antibody. ([TA504249])