

## Product datasheet for **TA504244S**

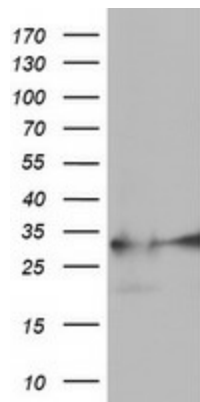
### EXOSC7 Mouse Monoclonal Antibody [Clone ID: OTI1F4]

#### Product data:

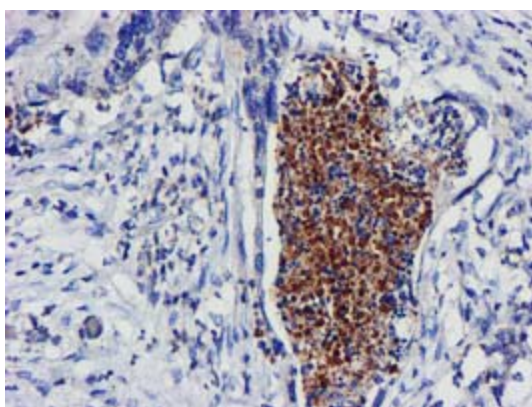
|                         |   |
|-------------------------|---|
| Product Type:           | Primary Antibodies  |
| Clone Name:             | OTI1F4  |
| Applications:           | FC, IHC, WB   |
| Recommended Dilution:   | WB 1:2000, IHC 1:150, FLOW 1:100  |
| Reactivity:             | Human, Mouse, Rat   |
| Host:                   | Mouse   |
| Isotype:                | IgG1  |
| Clonality:              | Monoclonal  |
| Immunogen:              | Full length human recombinant protein of human EXOSC7(NP_055819) produced in HEK293T cell.  |
| Formulation:            | PBS (pH 7.3) containing 1% BSA, 50% glycerol and 0.02% sodium azide.  |
| Concentration:          | 0.91 mg/ml  |
| Purification:           | Purified from mouse ascites fluids or tissue culture supernatant by affinity chromatography (protein A/G)   |
| Conjugation:            | Unconjugated  |
| Storage:                | Store at -20°C as received.   |
| Stability:              | Stable for 12 months from date of receipt.  |
| Predicted Protein Size: | 31.6 kDa  |
| Gene Name:              | exosome component 7   |
| Database Link:          | <a href="#">NP_055819</a><br><a href="#">Entrez Gene 66446 Mouse</a> <a href="#">Entrez Gene 316098 Rat</a> <a href="#">Entrez Gene 23016 Human</a><br><a href="#">Q15024</a> |
| Synonyms:               | EAP1; hRrp42p; p8; RRP42; Rrp42p  |
| Protein Families:       | Stem cell - Pluripotency  |
| Protein Pathways:       | RNA degradation   |



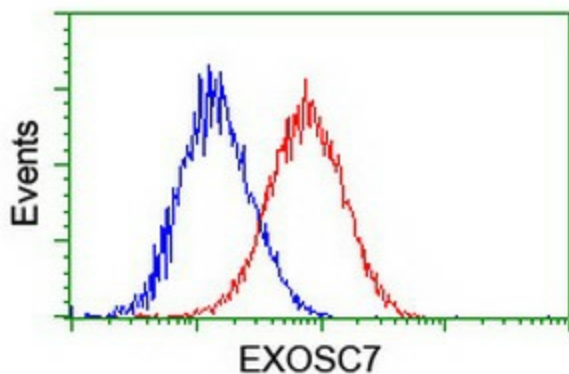
[View online »](#)

**Product images:**

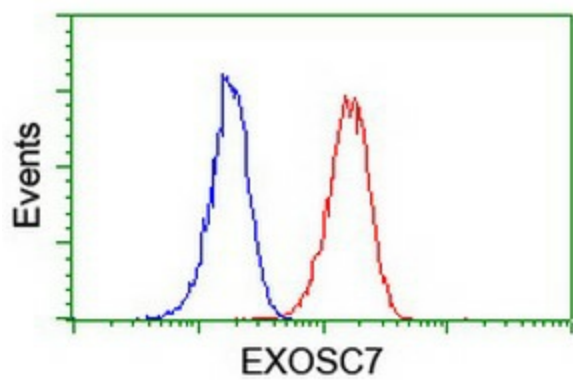
HEK293T cells were transfected with the pCMV6-ENTRY control (Left lane) or pCMV6-ENTRY EXOSC7 ([RC201419], Right lane) cDNA for 48 hrs and lysed. Equivalent amounts of cell lysates (5 ug per lane) were separated by SDS-PAGE and immunoblotted with anti-EXOSC7. Positive lysates [LY402399] (100ug) and [LC402399] (20ug) can be purchased separately from OriGene.



Immunohistochemical staining of paraffin-embedded Carcinoma of Human pancreas tissue using anti-EXOSC7 mouse monoclonal antibody. (Heat-induced epitope retrieval by 10mM citric buffer, pH6.0, 100°C for 10min, [TA504244])



Flow cytometric Analysis of HeLa cells, using anti-EXOSC7 antibody ([TA504244]), (Red), compared to a nonspecific negative control antibody, (Blue).



Flow cytometric Analysis of Jurkat cells, using anti-EXOSC7 antibody ([TA504244]), (Red), compared to a nonspecific negative control antibody, (Blue).