

Product datasheet for **TA504240AM**

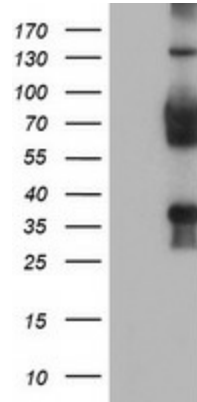
TLE2 Mouse Monoclonal Antibody (Biotin conjugated) [Clone ID: OT15A6]

Product data:

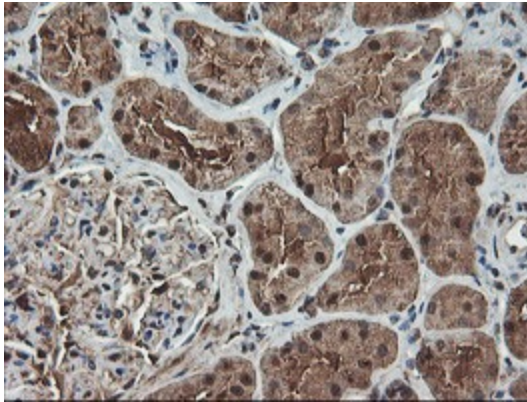
Product Type:	Primary Antibodies
Clone Name:	OT15A6
Applications:	FC, IF, IHC, WB
Recommended Dilution:	WB 1:2000, FLOW 1:100, IF: 1:100
Reactivity:	Human, Mouse, Rat
Host:	Mouse
Isotype:	IgG1
Clonality:	Monoclonal
Immunogen:	Full length human recombinant protein of human TLE2(NP_003251) produced in HEK293T cell.
Formulation:	PBS (pH 7.3) containing 1% BSA, 50% glycerol and 0.02% sodium azide.
Concentration:	0.5 mg/ml
Purification:	Purified from mouse ascites fluids or tissue culture supernatant by affinity chromatography (protein A/G)
Conjugation:	Biotin
Storage:	Store at -20°C as received.
Stability:	Stable for 12 months from date of receipt.
Predicted Protein Size:	79.7 kDa
Gene Name:	TLE family member 2, transcriptional corepressor
Database Link:	NP_003251 Entrez Gene 7089 Human Q04725
Synonyms:	ESG; ESG2; GRG2
Protein Families:	Transcription Factors



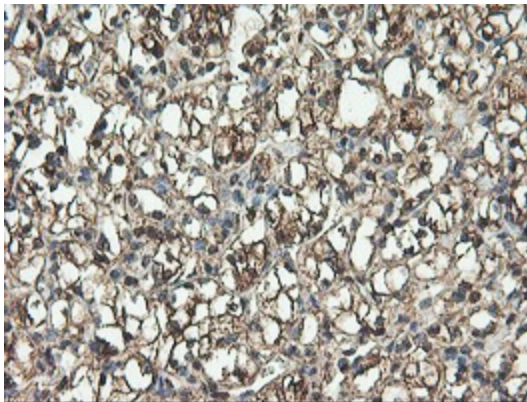
[View online »](#)

Product images:

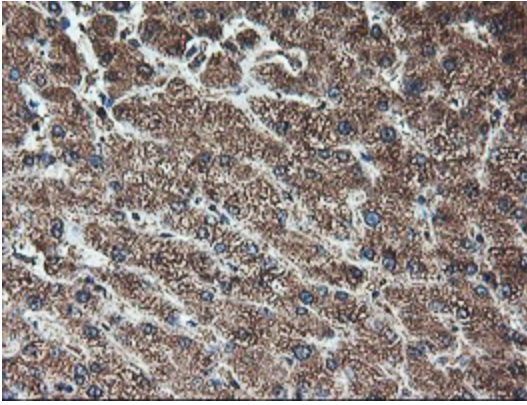
HEK293T cells were transfected with the pCMV6-ENTRY control (Cat# [PS100001], Left lane) or pCMV6-ENTRY TLE2 (Cat# [RC202474], Right lane) cDNA for 48 hrs and lysed. Equivalent amounts of cell lysates (5 ug per lane) were separated by SDS-PAGE and immunoblotted with anti-TLE2 (Cat# [TA504240]). Positive lysates [LY401124] (100ug) and [LC401124] (20ug) can be purchased separately from OriGene.



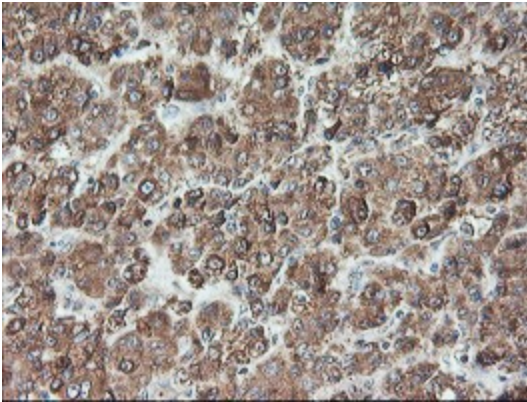
Immunohistochemical staining of paraffin-embedded Human Kidney tissue within the normal limits using anti-TLE2 mouse monoclonal antibody. ([TA504240]; heat-induced epitope retrieval by 10mM citric buffer, pH6.0, 120°C for 3min)



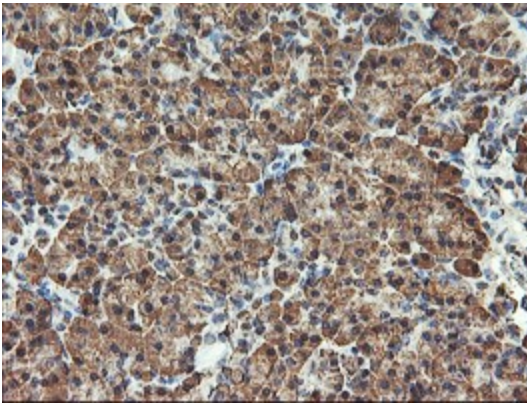
Immunohistochemical staining of paraffin-embedded Carcinoma of Human kidney tissue using anti-TLE2 mouse monoclonal antibody. ([TA504240]; heat-induced epitope retrieval by 10mM citric buffer, pH6.0, 120°C for 3min)



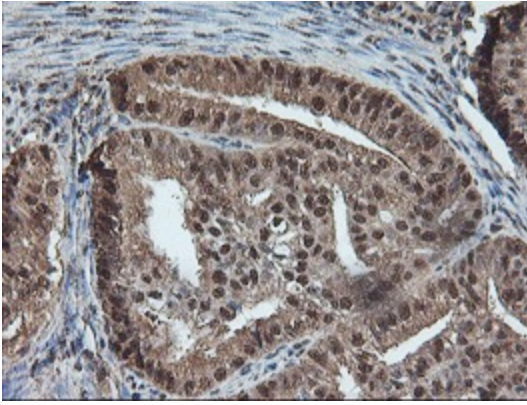
Immunohistochemical staining of paraffin-embedded Human liver tissue within the normal limits using anti-TLE2 mouse monoclonal antibody. ([TA504240]; heat-induced epitope retrieval by 10mM citric buffer, pH6.0, 120°C for 3min)



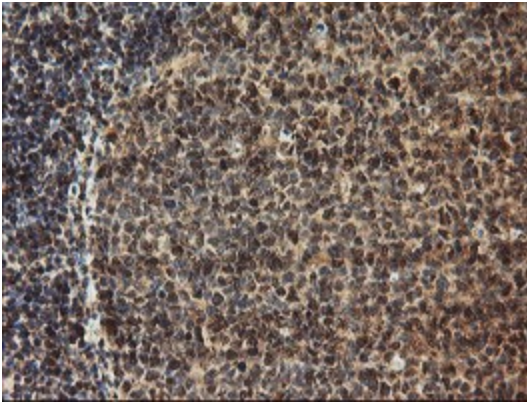
Immunohistochemical staining of paraffin-embedded Carcinoma of Human liver tissue using anti-TLE2 mouse monoclonal antibody. ([TA504240]; heat-induced epitope retrieval by 10mM citric buffer, pH6.0, 120°C for 3min)



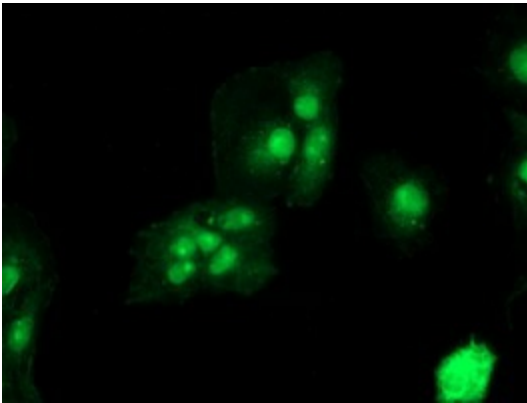
Immunohistochemical staining of paraffin-embedded Human pancreas tissue within the normal limits using anti-TLE2 mouse monoclonal antibody. ([TA504240]; heat-induced epitope retrieval by 10mM citric buffer, pH6.0, 120°C for 3min)



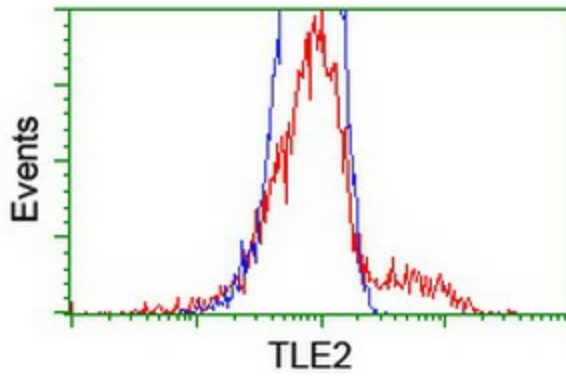
Immunohistochemical staining of paraffin-embedded Adenocarcinoma of Human endometrium tissue using anti-TLE2 mouse monoclonal antibody. ([TA504240]; heat-induced epitope retrieval by 10mM citric buffer, pH6.0, 120°C for 3min)



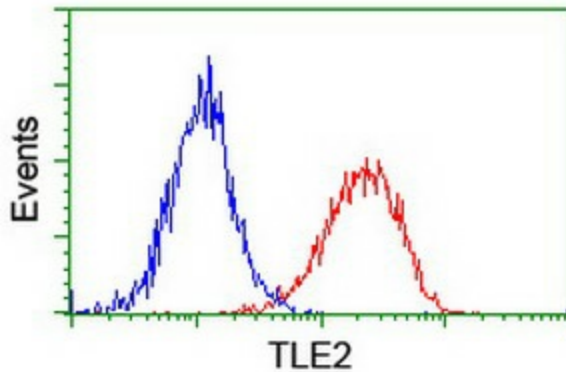
Immunohistochemical staining of paraffin-embedded Human tonsil within the normal limits using anti-TLE2 mouse monoclonal antibody. ([TA504240]; heat-induced epitope retrieval by 10mM citric buffer, pH6.0, 120°C for 3min)



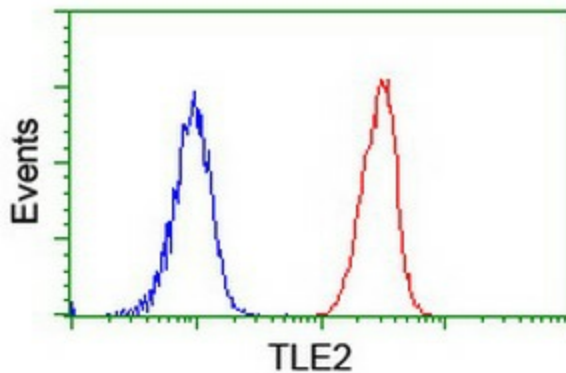
Anti-TLE2 mouse monoclonal antibody ([TA504240]) immunofluorescent staining of COS7 cells transiently transfected by pCMV6-ENTRY TLE2 ([RC202474]).



HEK293T cells transfected with either [RC202474] overexpress plasmid (Red) or empty vector control plasmid (Blue) were immunostained by anti-TLE2 antibody ([TA504240]), and then analyzed by flow cytometry.



Flow cytometric Analysis of HeLa cells, using anti-TLE2 antibody ([TA504240]), (Red), compared to a nonspecific negative control antibody, (Blue).



Flow cytometric Analysis of Jurkat cells, using anti-TLE2 antibody ([TA504240]), (Red), compared to a nonspecific negative control antibody, (Blue).