

## Product datasheet for **TA504226**

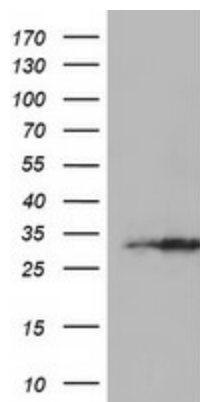
### EXOSC7 Mouse Monoclonal Antibody [Clone ID: OTI2E5]

#### Product data:

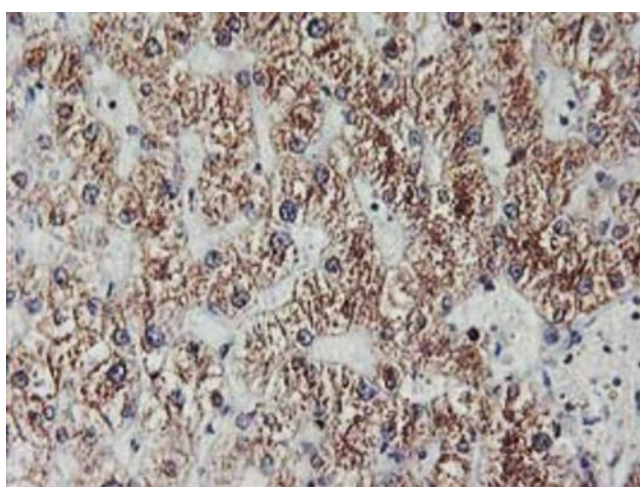
Product Type:	Primary Antibodies
Clone Name:	OTI2E5
Applications:	IF, IHC, WB
Recommended Dilution:	WB 1:2000, IHC 1:150, IF 1:100
Reactivity:	Human, Mouse, Rat
Host:	Mouse
Isotype:	IgG1
Clonality:	Monoclonal
Immunogen:	Full length human recombinant protein of human EXOSC7(NP_055819) produced in HEK293T cell.
Formulation:	PBS (pH 7.3) containing 1% BSA, 50% glycerol and 0.02% sodium azide.
Concentration:	0.41 mg/ml
Purification:	Purified from mouse ascites fluids or tissue culture supernatant by affinity chromatography (protein A/G)
Conjugation:	Unconjugated
Storage:	Store at -20°C as received.
Stability:	Stable for 12 months from date of receipt.
Predicted Protein Size:	31.6 kDa
Gene Name:	exosome component 7
Database Link:	<a href="#">NP_055819</a> <a href="#">Entrez Gene 66446 Mouse</a> <a href="#">Entrez Gene 316098 Rat</a> <a href="#">Entrez Gene 23016 Human</a> <a href="#">Q15024</a>
Synonyms:	EAP1; hRrp42p; p8; RRP42; Rrp42p
Protein Families:	Stem cell - Pluripotency
Protein Pathways:	RNA degradation



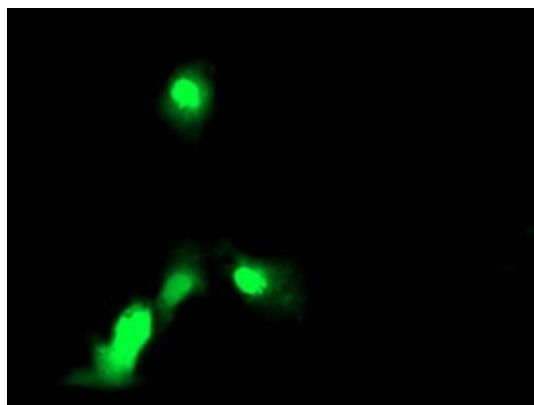
[View online »](#)

**Product images:**

HEK293T cells were transfected with the pCMV6-ENTRY control (Left lane) or pCMV6-ENTRY EXOSC7 ([RC201419], Right lane) cDNA for 48 hrs and lysed. Equivalent amounts of cell lysates (5 ug per lane) were separated by SDS-PAGE and immunoblotted with anti-EXOSC7. Positive lysates [LY402399] (100ug) and [LC402399] (20ug) can be purchased separately from OriGene.



Immunohistochemical staining of paraffin-embedded Human liver tissue within the normal limits using anti-EXOSC7 mouse monoclonal antibody. Heat-induced epitope retrieval by EDTA solution buffer pH 8.0 at 120°C for 3 min.



Anti-EXOSC7 mouse monoclonal antibody (TA504226) immunofluorescent staining of COS7 cells transiently transfected by pCMV6-ENTRY EXOSC7 ([RC201419]).