

Product datasheet for **TA504224BM**

Hsp75 (TRAP1) Mouse Monoclonal Antibody (HRP conjugated) [Clone ID: OTI1A1]

Product data:

Product Type:	Primary Antibodies
Clone Name:	OTI1A1
Applications:	IF, IHC, WB
Recommended Dilution:	WB 1:500~2000, IHC 1:150, IF 1:100
Reactivity:	Human, Dog, Rat, Monkey, Mouse
Host:	Mouse
Isotype:	IgG1
Clonality:	Monoclonal
Immunogen:	Full length human recombinant protein of human TRAP1(NP_057376) produced in HEK293T cell.
Formulation:	PBS (pH 7.3) containing 1% BSA, 50% glycerol.
Concentration:	0.5 mg/ml
Purification:	Purified from mouse ascites fluids or tissue culture supernatant by affinity chromatography (protein A/G)
Conjugation:	HRP
Storage:	Store at -20°C as received.
Stability:	Stable for 12 months from date of receipt.
Predicted Protein Size:	79.9 kDa
Gene Name:	TNF receptor associated protein 1
Database Link:	NP_057376 Entrez Gene 68015 Mouse Entrez Gene 287069 Rat Entrez Gene 102153194 Dog Entrez Gene 706234 Monkey Entrez Gene 10131 Human Q12931



[View online »](#)

Background:

HSP90 proteins are highly conserved molecular chaperones that have key roles in signal transduction, protein folding, protein degradation, and morphologic evolution. HSP90 proteins normally associate with other cochaperones and play important roles in folding newly synthesized proteins or stabilizing and refolding denatured proteins after stress. TRAP1 is a mitochondrial HSP90 protein. Other HSP90 proteins are found in cytosol (see HSP90AA1; MIM 140571) and endoplasmic reticulum (HSP90B1; MIM 191175) (Chen et al., 2005 [PubMed 16269234]). [supplied by OMIM]

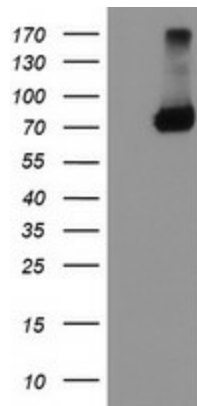
Synonyms:

HSP 75; HSP75; HSP90L; TRAP-1

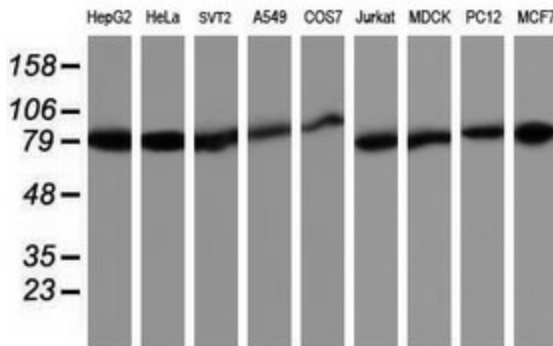
Protein Families:

Druggable Genome

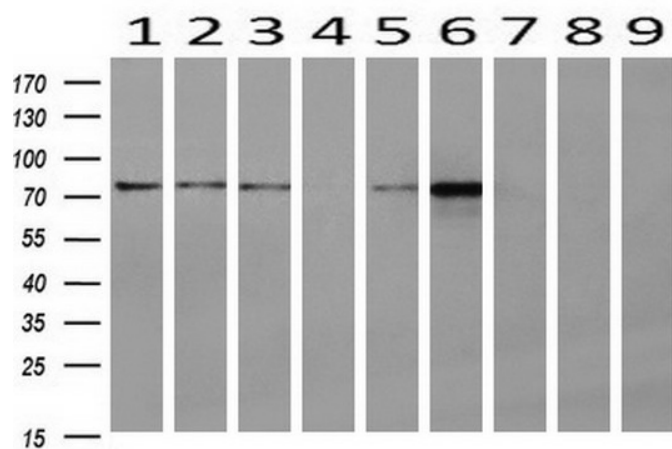
Product images:



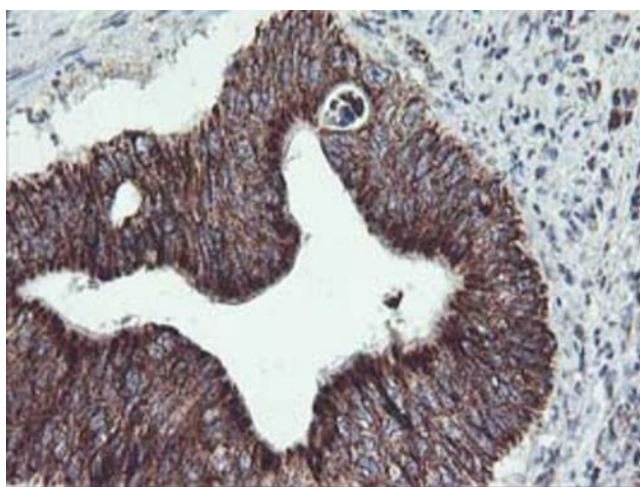
HEK293T cells were transfected with the pCMV6-ENTRY control (Left lane) or pCMV6-ENTRY TRAP1 ([RC203439], Right lane) cDNA for 48 hrs and lysed. Equivalent amounts of cell lysates (5 ug per lane) were separated by SDS-PAGE and immunoblotted with anti-TRAP1. Positive lysates [LY402533] (100ug) and [LC402533] (20ug) can be purchased separately from OriGene.



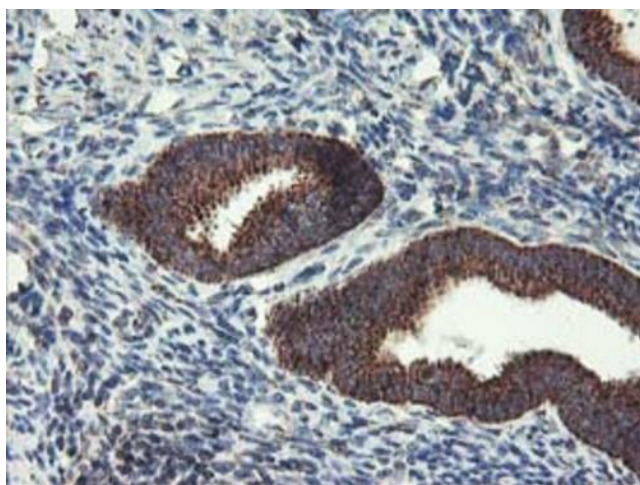
Western blot analysis of extracts (35ug) from 9 different cell lines by using anti-TRAP1 monoclonal antibody.



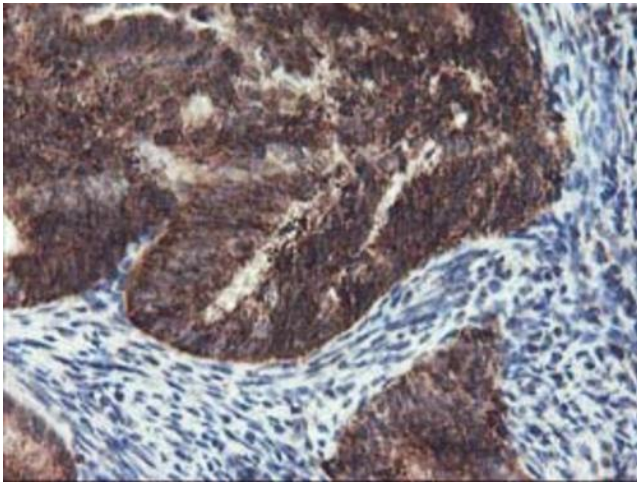
Western blot analysis of extracts (10ug) from 9 Human tissue by using anti-TRAP1 monoclonal antibody at 1:200 (1: Testis; 2: Omentum; 3: Uterus; 4: Breast; 5: Brain; 6: Liver; 7: Ovary; 8: Thyroid gland; 9: colon).



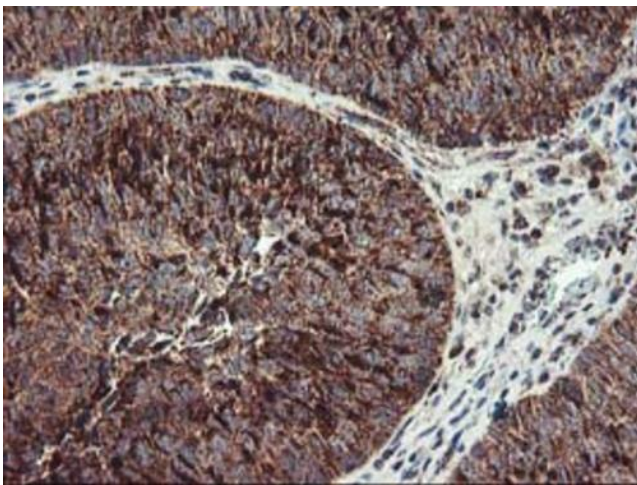
Immunohistochemical staining of paraffin-embedded Carcinoma of Human pancreas tissue using anti-TRAP1 mouse monoclonal antibody. (Heat-induced epitope retrieval by 10mM citric buffer, pH6.0, 100°C for 10min, [TA504224])



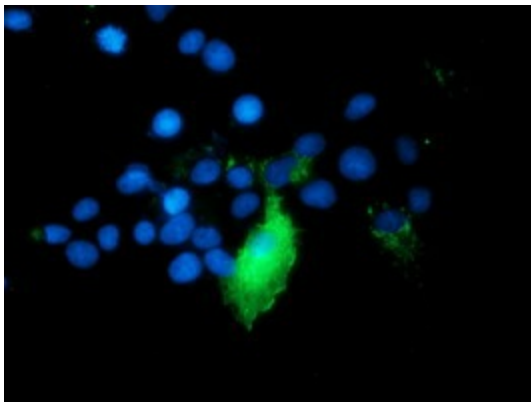
Immunohistochemical staining of paraffin-embedded Human endometrium tissue within the normal limits using anti-TRAP1 mouse monoclonal antibody. (Heat-induced epitope retrieval by 10mM citric buffer, pH6.0, 100°C for 10min, [TA504224])



Immunohistochemical staining of paraffin-embedded Adenocarcinoma of Human endometrium tissue using anti-TRAP1 mouse monoclonal antibody. (Heat-induced epitope retrieval by 10mM citric buffer, pH6.0, 100°C for 10min, [TA504224])



Immunohistochemical staining of paraffin-embedded Carcinoma of Human bladder tissue using anti-TRAP1 mouse monoclonal antibody. (Heat-induced epitope retrieval by 10mM citric buffer, pH6.0, 100°C for 10min, [TA504224])



Anti-TRAP1 mouse monoclonal antibody ([TA504224]) immunofluorescent staining of COS7 cells transiently transfected by pCMV6-ENTRY TRAP1 ([RC203439]).