

## Product datasheet for **TA504221BM**

### SSX5 Mouse Monoclonal Antibody (HRP conjugated) [Clone ID: OTI1D6]

#### Product data:

|                         |   |
|-------------------------|---|
| Product Type:           | Primary Antibodies  |
| Clone Name:             | OTI1D6  |
| Applications:           | WB  |
| Recommended Dilution:   | WB 1:2000   |
| Reactivity:             | Human   |
| Host:                   | Mouse   |
| Isotype:                | IgG2b   |
| Clonality:              | Monoclonal  |
| Immunogen:              | Full length human recombinant protein of human SSX5(NP_066295) produced in HEK293T cell.                  |
| Formulation:            | PBS (pH 7.3) containing 1% BSA, 50% glycerol.   |
| Concentration:          | 0.5 mg/ml   |
| Purification:           | Purified from mouse ascites fluids or tissue culture supernatant by affinity chromatography (protein A/G) |
| Conjugation:            | HRP   |
| Storage:                | Store at -20°C as received.   |
| Stability:              | Stable for 12 months from date of receipt.  |
| Predicted Protein Size: | 26.1 kDa  |
| Gene Name:              | SSX family member 5   |
| Database Link:          | <a href="#">NP_066295</a><br><a href="#">Entrez Gene 6758 Human</a><br><a href="#">O60225</a>             |



[View online »](#)

**Background:**

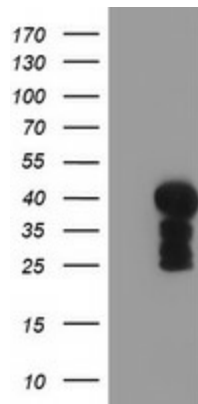
The product of this gene belongs to the family of highly homologous synovial sarcoma X (SSX) breakpoint proteins. These proteins may function as transcriptional repressors. They are also capable of eliciting spontaneously humoral and cellular immune responses in cancer patients, and are potentially useful targets in cancer vaccine-based immunotherapy. SSX1, SSX2 and SSX4 genes have been involved in the t(X;18) translocation characteristically found in all synovial sarcomas. This gene appears not to be involved in this type of chromosome translocation. Two transcript variants encoding distinct isoforms have been identified for this gene. [provided by RefSeq]

**Synonyms:**

MGC9494

**Protein Families:**

Transcription Factors

**Product images:**

HEK293T cells were transfected with the pCMV6-ENTRY control (Left lane) or pCMV6-ENTRY SSX5 ([RC202208], Right lane) cDNA for 48 hrs and lysed. Equivalent amounts of cell lysates (5 ug per lane) were separated by SDS-PAGE and immunoblotted with anti-SSX5. Positive lysates [LY412141] (100ug) and [LC412141] (20ug) can be purchased separately from OriGene.