

Product datasheet for TA504217M

ALG2 Mouse Monoclonal Antibody [Clone ID: OTI2A3]

Product data:

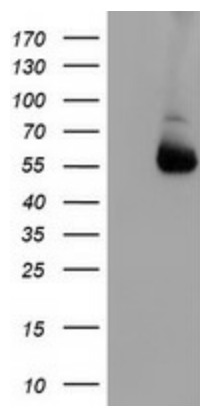
Product Type:	Primary Antibodies
Clone Name:	OTI2A3
Applications:	IF, IHC, WB
Recommended Dilution:	WB 1:500, IHC 1:150, IF 1:100
Reactivity:	Human
Host:	Mouse
Isotype:	IgG1
Clonality:	Monoclonal
Immunogen:	Full length human recombinant protein of human ALG2(NP_149078) produced in HEK293T cell.
Formulation:	PBS (pH 7.3) containing 1% BSA, 50% glycerol and 0.02% sodium azide.
Concentration:	0.83 mg/ml
Purification:	Purified from mouse ascites fluids or tissue culture supernatant by affinity chromatography (protein A/G)
Conjugation:	Unconjugated
Storage:	Store at -20°C as received.
Stability:	Stable for 12 months from date of receipt.
Predicted Protein Size:	46.9 kDa
Gene Name:	ALG2 alpha-1,3/1,6-mannosyltransferase
Database Link:	NP_149078 Entrez Gene 85365 Human Q9H553
Background:	<p>This gene encodes a member of the glycosyltransferase 1 family. The encoded protein acts as an alpha 1,3 mannosyltransferase, mannosylating Man(2)GlcNAc(2)-dolichol diphosphate and Man(1)GlcNAc(2)-dolichol diphosphate to form Man(3)GlcNAc(2)-dolichol diphosphate. Defects in this gene have been associated with congenital disorder of glycosylation type 1h (CDG-Ih). Alternative splicing results in multiple transcript variants. [provided by RefSeq]</p>


[View online »](#)

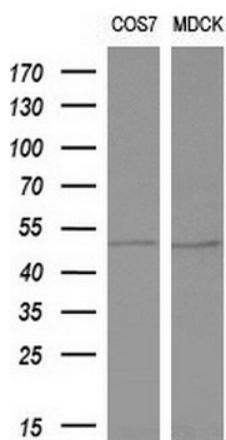
Synonyms: CDGLi; hALPG2; NET38

Protein Pathways: Metabolic pathways, N-Glycan biosynthesis

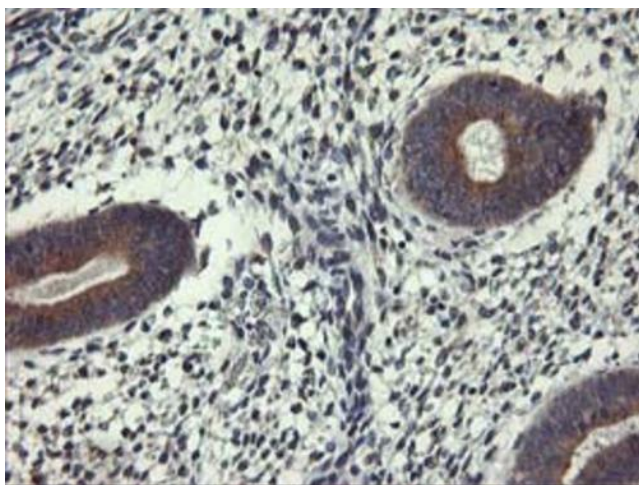
Product images:



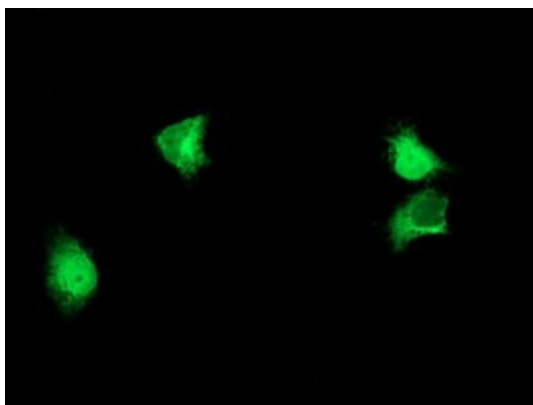
HEK293T cells were transfected with the pCMV6-ENTRY control (Left lane) or pCMV6-ENTRY ALG2 ([RC204766], Right lane) cDNA for 48 hrs and lysed. Equivalent amounts of cell lysates (5 ug per lane) were separated by SDS-PAGE and immunoblotted with anti-ALG2. Positive lysates [LY409737] (100ug) and [LC409737] (20ug) can be purchased separately from OriGene.



Western blot analysis of extracts (10ug) from 2 different cell lines by using anti-ALG2 monoclonal antibody (1:200).



Immunohistochemical staining of paraffin-embedded Human endometrium tissue within the normal limits using anti-ALG2 mouse monoclonal antibody. Heat-induced epitope retrieval by EDTA solution buffer pH 8.0 at 120°C for 3 min.



Anti-ALG2 mouse monoclonal antibody ([TA504217]) immunofluorescent staining of COS7 cells transiently transfected by pCMV6-ENTRY ALG2 ([RC204766]).