

Product datasheet for **TA504214AM**

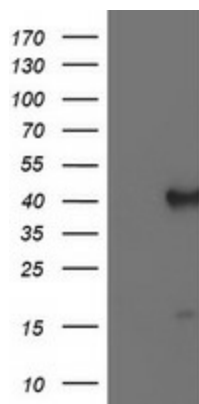
PECI (EC12) Mouse Monoclonal Antibody (Biotin conjugated) [Clone ID: OT11H4]

Product data:

Product Type:	Primary Antibodies
Clone Name:	OT11H4
Applications:	WB
Recommended Dilution:	WB 1:2000
Reactivity:	Human
Host:	Mouse
Isotype:	IgG1
Clonality:	Monoclonal
Immunogen:	Full length human recombinant protein of human Peci(NP_006108) produced in HEK293T cell.
Formulation:	PBS (pH 7.3) containing 1% BSA, 50% glycerol and 0.02% sodium azide.
Concentration:	0.5 mg/ml
Purification:	Purified from mouse ascites fluids or tissue culture supernatant by affinity chromatography (protein A/G)
Conjugation:	Biotin
Storage:	Store at -20°C as received.
Stability:	Stable for 12 months from date of receipt.
Predicted Protein Size:	40 kDa
Gene Name:	enoyl-CoA delta isomerase 2
Database Link:	NP_006108 Entrez Gene 10455 Human O75521
Background:	PECI is an auxiliary enzyme that catalyzes an isomerization step required for the beta-oxidation of unsaturated fatty acids. [supplied by OMIM]
Synonyms:	ACBD2; dj1013A10.3; DRS-1; DRS1; HCA88; Peci
Protein Pathways:	Fatty acid metabolism



[View online »](#)

Product images:

HEK293T cells were transfected with the pCMV6-ENTRY control (Left lane) or pCMV6-ENTRY PECI ([RC204994], Right lane) cDNA for 48 hrs and lysed. Equivalent amounts of cell lysates (5 ug per lane) were separated by SDS-PAGE and immunoblotted with anti-PECI. Positive lysates [LY401844] (100ug) and [LC401844] (20ug) can be purchased separately from OriGene.