

## Product datasheet for **TA504213BM**

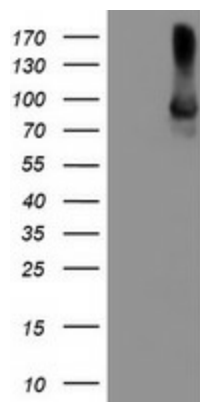
### **ALOX15 Mouse Monoclonal Antibody (HRP conjugated) [Clone ID: OTI2G3]**

#### **Product data:**

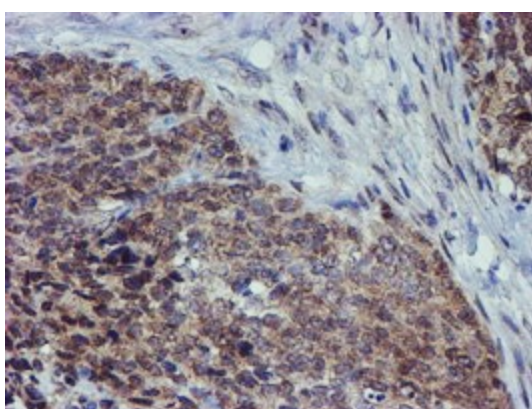
Product Type:	Primary Antibodies
Clone Name:	OTI2G3
Applications:	FC, IHC, WB
Recommended Dilution:	WB 1:2000, IHC 1:150, FLOW 1:100
Reactivity:	Human
Host:	Mouse
Isotype:	IgG2b
Clonality:	Monoclonal
Immunogen:	Full length human recombinant protein of human ALOX15(NP_001131) produced in HEK293T cell.
Formulation:	PBS (pH 7.3) containing 1% BSA, 50% glycerol.
Concentration:	0.5 mg/ml
Purification:	Purified from mouse ascites fluids or tissue culture supernatant by affinity chromatography (protein A/G)
Conjugation:	HRP
Storage:	Store at -20°C as received.
Stability:	Stable for 12 months from date of receipt.
Predicted Protein Size:	74.6 kDa
Gene Name:	arachidonate 15-lipoxygenase
Database Link:	<a href="#">NP_001131</a> <a href="#">Entrez Gene 246 Human</a> <a href="#">P16050</a>
Synonyms:	12-LOX; 15-LOX-1; 15LOX-1
Protein Families:	Druggable Genome
Protein Pathways:	Arachidonic acid metabolism, Linoleic acid metabolism, Metabolic pathways



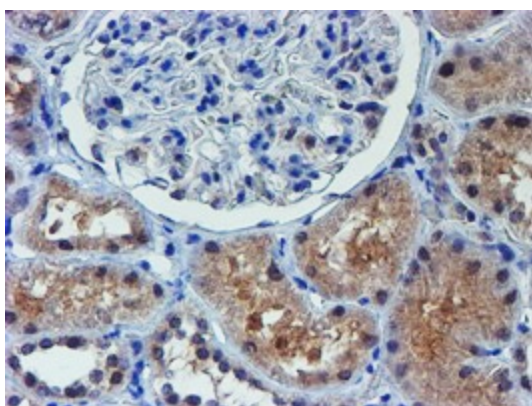
[View online »](#)

**Product images:**

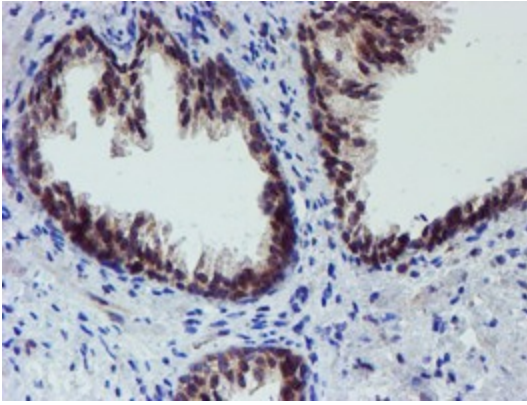
HEK293T cells were transfected with the pCMV6-ENTRY control (Left lane) or pCMV6-ENTRY ALOX15 ([RC206621], Right lane) cDNA for 48 hrs and lysed. Equivalent amounts of cell lysates (5 ug per lane) were separated by SDS-PAGE and immunoblotted with anti-ALOX15. Positive lysates [LY400456] (100ug) and [LC400456] (20ug) can be purchased separately from OriGene.



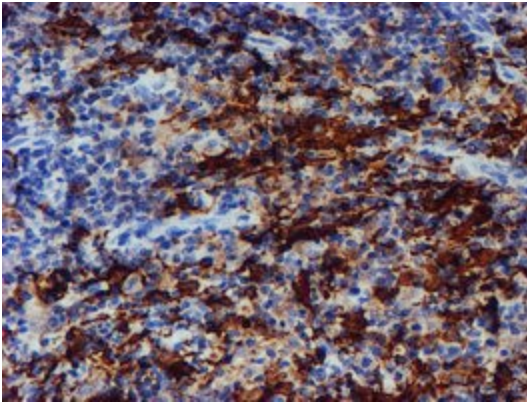
Immunohistochemical staining of paraffin-embedded Adenocarcinoma of Human breast tissue using anti-ALOX15 mouse monoclonal antibody. (Heat-induced epitope retrieval by 10mM citric buffer, pH6.0, 100°C for 10min, [TA504213])



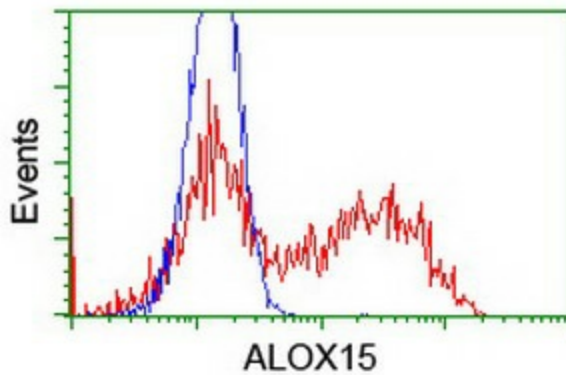
Immunohistochemical staining of paraffin-embedded Human Kidney tissue within the normal limits using anti-ALOX15 mouse monoclonal antibody. (Heat-induced epitope retrieval by 10mM citric buffer, pH6.0, 100°C for 10min, [TA504213])



Immunohistochemical staining of paraffin-embedded Human prostate tissue within the normal limits using anti-ALOX15 mouse monoclonal antibody. (Heat-induced epitope retrieval by 10mM citric buffer, pH6.0, 100°C for 10min, [TA504213])



Immunohistochemical staining of paraffin-embedded Human lymphoma tissue using anti-ALOX15 mouse monoclonal antibody. (Heat-induced epitope retrieval by 10mM citric buffer, pH6.0, 100°C for 10min, [TA504213])



HEK293T cells transfected with either [RC206621] overexpress plasmid (Red) or empty vector control plasmid (Blue) were immunostained by anti-ALOX15 antibody ([TA504213]), and then analyzed by flow cytometry.