

Product datasheet for **TA504187**

GOLPH2 (GOLM1) Mouse Monoclonal Antibody [Clone ID: OTI7B3]

Product data:

Product Type:	Primary Antibodies
Clone Name:	OTI7B3
Applications:	WB
Recommended Dilution:	WB 1:2000
Reactivity:	Human
Host:	Mouse
Isotype:	IgG2a
Clonality:	Monoclonal
Immunogen:	Full length human recombinant protein of human GOLM1(NP_808800) produced in HEK293T cell.
Formulation:	PBS (pH 7.3) containing 1% BSA, 50% glycerol and 0.02% sodium azide.
Concentration:	1 mg/ml
Purification:	Purified from mouse ascites fluids or tissue culture supernatant by affinity chromatography (protein A/G)
Conjugation:	Unconjugated
Storage:	Store at -20°C as received.
Stability:	Stable for 12 months from date of receipt.
Predicted Protein Size:	45.2 kDa
Gene Name:	golgi membrane protein 1
Database Link:	NP_808800 Entrez Gene 51280 Human Q8NBJ4

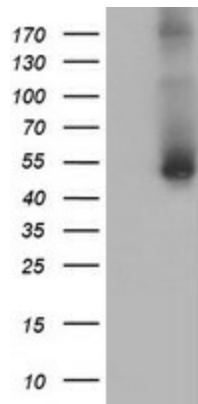
[View online »](#)

Background: The Golgi complex plays a key role in the sorting and modification of proteins exported from the endoplasmic reticulum. The protein encoded by this gene is a type II Golgi transmembrane protein. It processes proteins synthesized in the rough endoplasmic reticulum and assists in the transport of protein cargo through the Golgi apparatus. The expression of this gene has been observed to be upregulated in response to viral infection. Alternatively spliced transcript variants encoding the same protein have been described for this gene. [provided by RefSeq]

Synonyms: bA379P1.3; C9orf155; GOLPH2; GP73; HEL46; PSEC0257

Protein Families: Transmembrane

Product images:



HEK293T cells were transfected with the pCMV6-ENTRY control (Left lane) or pCMV6-ENTRY GOLM1 ([RC200086], Right lane) cDNA for 48 hrs and lysed. Equivalent amounts of cell lysates (5 ug per lane) were separated by SDS-PAGE and immunoblotted with anti-GOLM1. Positive lysates [LY406091] (100ug) and [LC406091] (20ug) can be purchased separately from OriGene.