

Product datasheet for **TA504178S**

NLN Mouse Monoclonal Antibody [Clone ID: OTI1D6]

Product data:

Product Type:	Primary Antibodies
Clone Name:	OTI1D6
Applications:	FC, IF, IHC, WB
Recommended Dilution:	WB 1:500~2000, IHC 1:150, IF 1:100, FLOW 1:100
Reactivity:	Human, Rat, Monkey, Mouse
Host:	Mouse
Isotype:	IgG1
Clonality:	Monoclonal
Immunogen:	Full length human recombinant protein of human NLN(NP_065777) produced in HEK293T cell.
Formulation:	PBS (pH 7.3) containing 1% BSA, 50% glycerol and 0.02% sodium azide.
Concentration:	1 mg/ml
Purification:	Purified from mouse ascites fluids or tissue culture supernatant by affinity chromatography (protein A/G)
Conjugation:	Unconjugated
Storage:	Store at -20°C as received.
Stability:	Stable for 12 months from date of receipt.
Predicted Protein Size:	80.5 kDa
Gene Name:	neurolysin
Database Link:	NP_065777 Entrez Gene 75805 Mouse Entrez Gene 117041 Rat Entrez Gene 696884 Monkey Entrez Gene 57486 Human Q9BYT8
Background:	This gene encodes a member of the metallopeptidase M3 protein family that cleaves neurotensin at the Pro10-Tyr11 bond, leading to the formation of neurotensin(1-10) and neurotensin(11-13). The encoded protein is likely involved in the termination of the neurotensinergic signal in the central nervous system and in the gastrointestinal tract. [provided by RefSeq, Jun



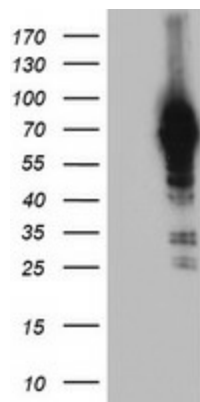
[View online »](#)

Synonyms: AGTBP; EP24.16; MEP; MOP

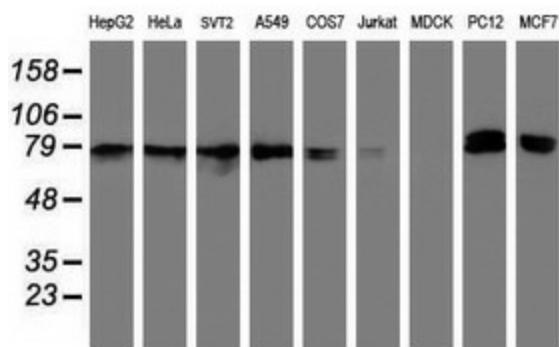
Protein Families: Druggable Genome, Protease

Protein Pathways: Renin-angiotensin system

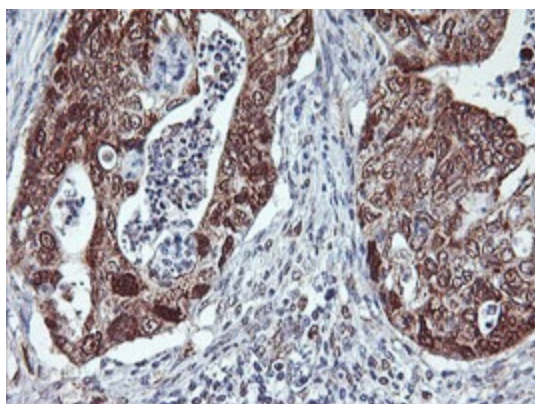
Product images:



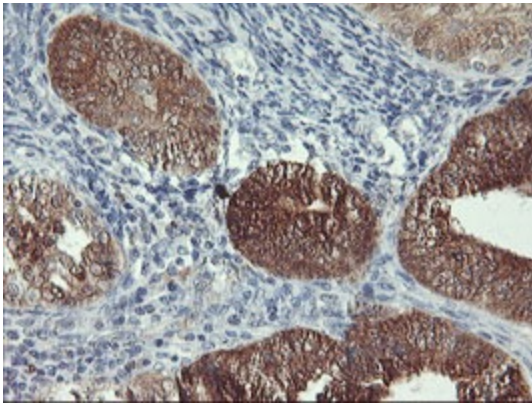
HEK293T cells were transfected with the pCMV6-ENTRY control (Cat# [PS100001], Left lane) or pCMV6-ENTRY NLN (Cat# [RC212447], Right lane) cDNA for 48 hrs and lysed. Equivalent amounts of cell lysates (5 ug per lane) were separated by SDS-PAGE and immunoblotted with anti-NLN(Cat# [TA504178]). Positive lysates [LY412353] (100ug) and [LC412353] (20ug) can be purchased separately from OriGene.



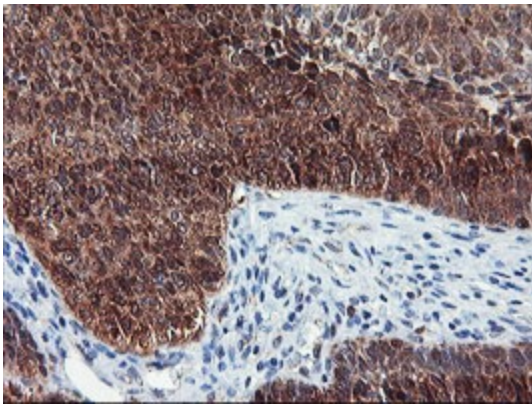
Western blot analysis of extracts (35ug) from 9 different cell lines by using anti-NLN monoclonal antibody (HepG2: human; HeLa: human; SVT2: mouse; A549: human; COS7: monkey; Jurkat: human; MDCK: canine; PC12: rat; MCF7: human).



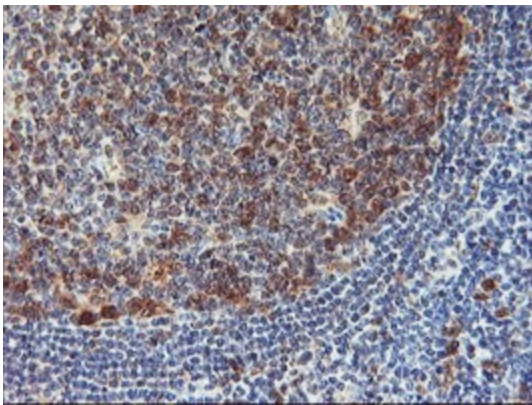
Immunohistochemical staining of paraffin-embedded Carcinoma of Human pancreas tissue using anti-NLN mouse monoclonal antibody. (Heat-induced epitope retrieval by 10mM citric buffer, pH6.0, 100°C for 10min, [TA504178])



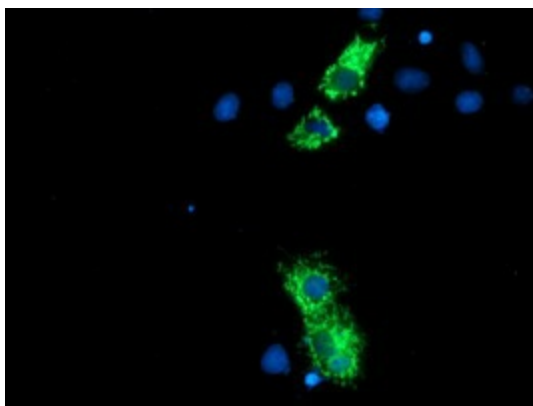
Immunohistochemical staining of paraffin-embedded Adenocarcinoma of Human endometrium tissue using anti-NLN mouse monoclonal antibody. (Heat-induced epitope retrieval by 10mM citric buffer, pH6.0, 100°C for 10min, [TA504178])



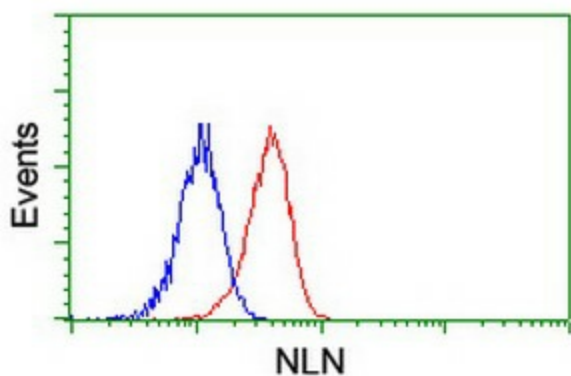
Immunohistochemical staining of paraffin-embedded Carcinoma of Human bladder tissue using anti-NLN mouse monoclonal antibody. (Heat-induced epitope retrieval by 10mM citric buffer, pH6.0, 100°C for 10min, [TA504178])



Immunohistochemical staining of paraffin-embedded Human tonsil within the normal limits using anti-NLN mouse monoclonal antibody. (Heat-induced epitope retrieval by 10mM citric buffer, pH6.0, 100°C for 10min, [TA504178])



Anti-NLN mouse monoclonal antibody ([TA504178]) immunofluorescent staining of COS7 cells transiently transfected by pCMV6-ENTRY NLN ([RC212447]).



Flow cytometric Analysis of Jurkat cells, using anti-NLN antibody ([TA504178]), (Red), compared to a nonspecific negative control antibody, (Blue).