

## Product datasheet for **TA504169**

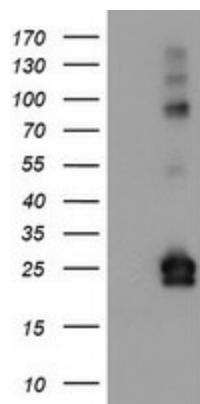
### IGJ (JCHAIN) Mouse Monoclonal Antibody [Clone ID: OTI3B5]

#### Product data:

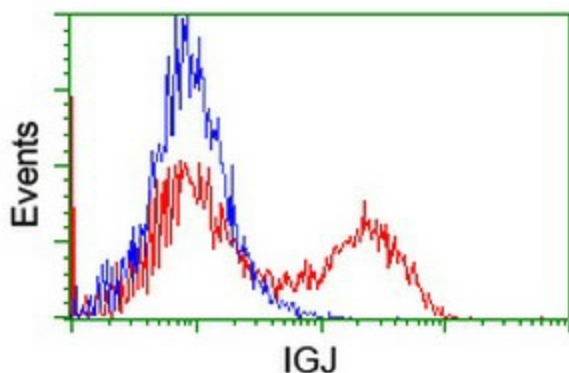
Product Type:	Primary Antibodies
Clone Name:	OTI3B5
Applications:	FC, WB
Recommended Dilution:	WB 1:2000, FLOW 1:100
Reactivity:	Human
Host:	Mouse
Isotype:	IgG1
Clonality:	Monoclonal
Immunogen:	Full length human recombinant protein of human IGJ(NP_653247) produced in HEK293T cell.
Formulation:	PBS (pH 7.3) containing 1% BSA, 50% glycerol and 0.02% sodium azide.
Concentration:	0.53 mg/ml
Purification:	Purified from mouse ascites fluids or tissue culture supernatant by affinity chromatography (protein A/G)
Conjugation:	Unconjugated
Storage:	Store at -20°C as received.
Stability:	Stable for 12 months from date of receipt.
Predicted Protein Size:	17.9 kDa
Gene Name:	joining chain of multimeric IgA and IgM
Database Link:	<a href="#">NP_653247</a> <a href="#">Entrez Gene 3512 Human P01591</a>
Synonyms:	IGCJ; IGJ; JCH



[View online »](#)

**Product images:**

HEK293T cells were transfected with the pCMV6-ENTRY control (Left lane) or pCMV6-ENTRY IGJ ([RC207932], Right lane) cDNA for 48 hrs and lysed. Equivalent amounts of cell lysates (5 ug per lane) were separated by SDS-PAGE and immunoblotted with anti-IGJ. Positive lysates [LY403400] (100ug) and [LC403400] (20ug) can be purchased separately from OriGene.



HEK293T cells transfected with either [RC207932] overexpress plasmid (Red) or empty vector control plasmid (Blue) were immunostained by anti-IGJ antibody (TA504169), and then analyzed by flow cytometry.