

## Product datasheet for **TA504156S**

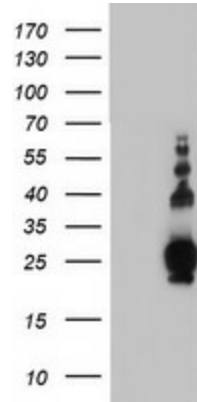
### Pallidin (BLOC1S6) Mouse Monoclonal Antibody [Clone ID: OT1E2]

#### Product data:

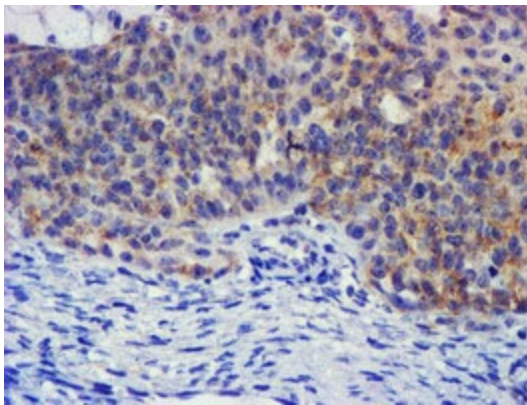
Product Type:	Primary Antibodies
Clone Name:	OT1E2
Applications:	FC, IHC, WB
Recommended Dilution:	WB 1:2000, IHC 1:150, FLOW 1:100
Reactivity:	Human, Mouse, Rat
Host:	Mouse
Isotype:	IgG1
Clonality:	Monoclonal
Immunogen:	Full length human recombinant protein of human PLDN(NP_036520) produced in HEK293T cell.
Formulation:	PBS (pH 7.3) containing 1% BSA, 50% glycerol and 0.02% sodium azide.
Concentration:	0.71 mg/ml
Purification:	Purified from mouse ascites fluids or tissue culture supernatant by affinity chromatography (protein A/G)
Conjugation:	Unconjugated
Storage:	Store at -20°C as received.
Stability:	Stable for 12 months from date of receipt.
Predicted Protein Size:	19.6 kDa
Gene Name:	biogenesis of lysosomal organelles complex 1 subunit 6
Database Link:	<a href="#">NP_036520</a> <a href="#">Entrez Gene 18457 Mouse</a> <a href="#">Entrez Gene 317630 Rat</a> <a href="#">Entrez Gene 26258 Human</a> <a href="#">Q9UL45</a>
Background:	The protein encoded by this gene may play a role in intracellular vesicle trafficking. It interacts with Syntaxin 13 which mediates intracellular membrane fusion. Several alternatively spliced transcript variants of this gene have been described, but the full-length nature of some of these variants has not been determined. [provided by RefSeq, Jul 2008]
Synonyms:	BLOS6; HPS9; PA; PALLID; PLDN



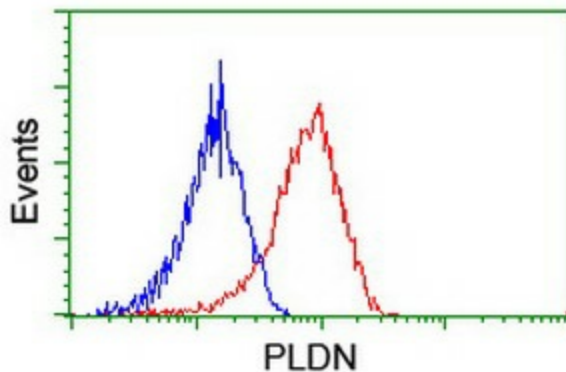
[View online »](#)

**Product images:**

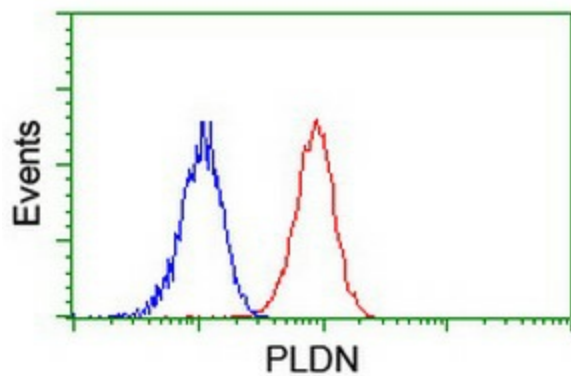
HEK293T cells were transfected with the pCMV6-ENTRY control (Left lane) or pCMV6-ENTRY PLDN ([RC201514], Right lane) cDNA for 48 hrs and lysed. Equivalent amounts of cell lysates (5 ug per lane) were separated by SDS-PAGE and immunoblotted with anti-PLDN. Positive lysates [LY402203] (100ug) and [LC402203] (20ug) can be purchased separately from OriGene.



Immunohistochemical staining of paraffin-embedded Adenocarcinoma of Human ovary tissue using anti-PLDN mouse monoclonal antibody. (Heat-induced epitope retrieval by 10mM citric buffer, pH6.0, 100°C for 10min, [TA504156])



Flow cytometric Analysis of HeLa cells, using anti-PLDN antibody ([TA504156]), (Red), compared to a nonspecific negative control antibody, (Blue).



Flow cytometric Analysis of Jurkat cells, using anti-PLDN antibody (TA504156), (Red), compared to a nonspecific negative control antibody, (Blue).