

## Product datasheet for **TA504156AM**

### **Pallidin (BLOC1S6) Mouse Monoclonal Antibody (Biotin conjugated) [Clone ID: OTI1E2]**

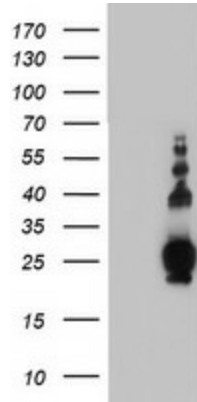
#### **Product data:**

<b>Product Type:</b>	Primary Antibodies
<b>Clone Name:</b>	OTI1E2
<b>Applications:</b>	FC, IHC, WB
<b>Recommended Dilution:</b>	WB 1:2000, IHC 1:150, FLOW 1:100
<b>Reactivity:</b>	Human, Mouse, Rat
<b>Host:</b>	Mouse
<b>Isotype:</b>	IgG1
<b>Clonality:</b>	Monoclonal
<b>Immunogen:</b>	Full length human recombinant protein of human PLDN(NP_036520) produced in HEK293T cell.
<b>Formulation:</b>	PBS (pH 7.3) containing 1% BSA, 50% glycerol and 0.02% sodium azide.
<b>Concentration:</b>	0.5 mg/ml
<b>Purification:</b>	Purified from mouse ascites fluids or tissue culture supernatant by affinity chromatography (protein A/G)
<b>Conjugation:</b>	Biotin
<b>Storage:</b>	Store at -20°C as received.
<b>Stability:</b>	Stable for 12 months from date of receipt.
<b>Predicted Protein Size:</b>	19.6 kDa
<b>Gene Name:</b>	biogenesis of lysosomal organelles complex 1 subunit 6
<b>Database Link:</b>	<a href="#">NP_036520</a> <a href="#">Entrez Gene 18457 Mouse</a> <a href="#">Entrez Gene 317630 Rat</a> <a href="#">Entrez Gene 26258 Human</a> <a href="#">Q9UL45</a>
<b>Background:</b>	The protein encoded by this gene may play a role in intracellular vesicle trafficking. It interacts with Syntaxin 13 which mediates intracellular membrane fusion. Several alternatively spliced transcript variants of this gene have been described, but the full-length nature of some of these variants has not been determined. [provided by RefSeq, Jul 2008]
<b>Synonyms:</b>	BLOS6; HPS9; PA; PALLID; PLDN

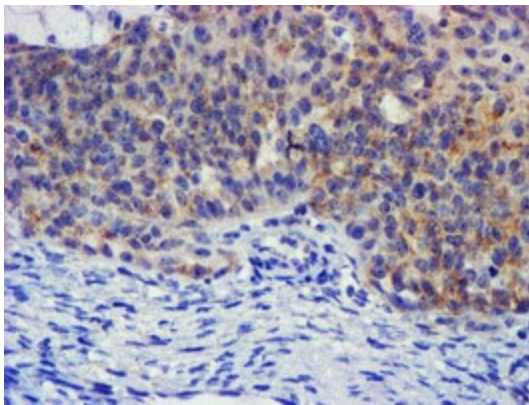


[View online »](#)

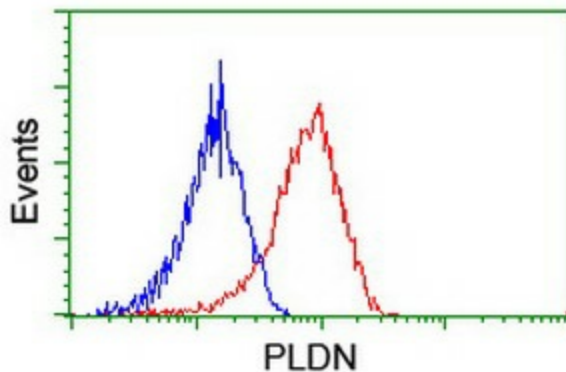
**Product images:**



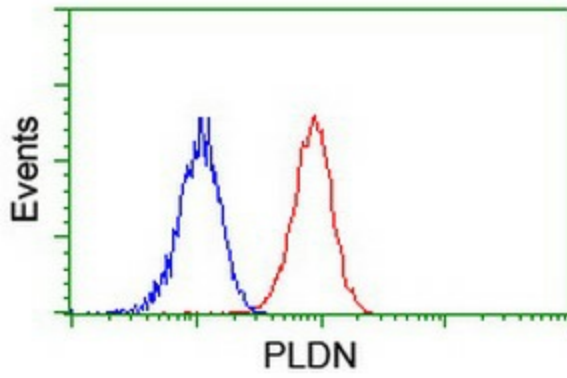
HEK293T cells were transfected with the pCMV6-ENTRY control (Left lane) or pCMV6-ENTRY PLDN ([RC201514], Right lane) cDNA for 48 hrs and lysed. Equivalent amounts of cell lysates (5 ug per lane) were separated by SDS-PAGE and immunoblotted with anti-PLDN. Positive lysates [LY402203] (100ug) and [LC402203] (20ug) can be purchased separately from OriGene.



Immunohistochemical staining of paraffin-embedded Adenocarcinoma of Human ovary tissue using anti-PLDN mouse monoclonal antibody. (Heat-induced epitope retrieval by 10mM citric buffer, pH6.0, 100°C for 10min, [TA504156])



Flow cytometric Analysis of HeLa cells, using anti-PLDN antibody ([TA504156]), (Red), compared to a nonspecific negative control antibody, (Blue).



Flow cytometric Analysis of Jurkat cells, using anti-PLDN antibody (TA504156), (Red), compared to a nonspecific negative control antibody, (Blue).