

Product datasheet for **TA504152BM**

GIRK1 (KCNJ3) Mouse Monoclonal Antibody (HRP conjugated) [Clone ID: OTI3E11]

Product data:

Product Type:	Primary Antibodies
Clone Name:	OTI3E11
Applications:	FC, IF, IHC, WB
Recommended Dilution:	WB 1:500~2000, IHC 1:150, IF 1:100, FLOW 1:100
Reactivity:	Human, Monkey, Mouse, Rat
Host:	Mouse
Isotype:	IgG2b
Clonality:	Monoclonal
Immunogen:	Human recombinant protein fragment corresponding to amino acids 279-501 of human KCNJ3(NP_002230) produced in E.coli.
Formulation:	PBS (pH 7.3) containing 1% BSA, 50% glycerol.
Concentration:	0.5 mg/ml
Purification:	Purified from mouse ascites fluids or tissue culture supernatant by affinity chromatography (protein A/G)
Conjugation:	HRP
Storage:	Store at -20°C as received.
Stability:	Stable for 12 months from date of receipt.
Predicted Protein Size:	56.4 kDa
Gene Name:	potassium inwardly rectifying channel subfamily J member 3
Database Link:	NP_002230 Entrez Gene 16519 Mouse Entrez Gene 50599 Rat Entrez Gene 696473 Monkey Entrez Gene 3760 Human P48549



[View online »](#)

Background:

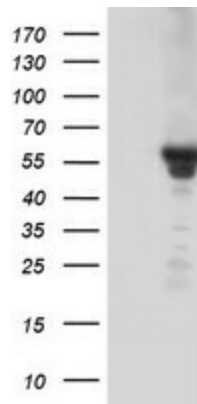
Potassium channels are present in most mammalian cells, where they participate in a wide range of physiologic responses. The protein encoded by this gene is an integral membrane protein and inward-rectifier type potassium channel. The encoded protein, which has a greater tendency to allow potassium to flow into a cell rather than out of a cell, is controlled by G-proteins and plays an important role in regulating heartbeat. It associates with three other G-protein-activated potassium channels to form a heteromultimeric pore-forming complex. [provided by RefSeq]

Synonyms:

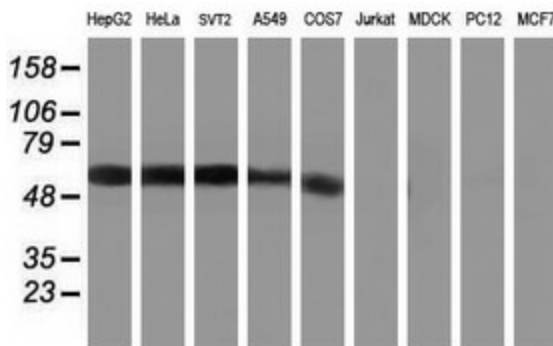
GIRK1; KGA; KIR3.1

Protein Families:

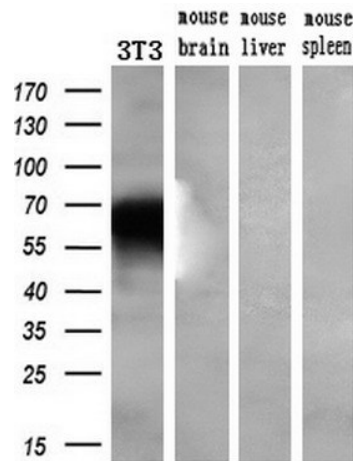
Druggable Genome, Ion Channels: Potassium, Transmembrane

Product images:


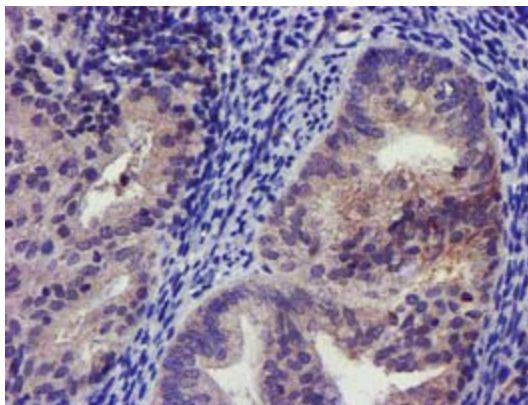
HEK293T cells were transfected with the pCMV6-ENTRY control (Cat# [PS100001], Left lane) or pCMV6-ENTRY KCNJ3 (Cat# [RC205322], Right lane) cDNA for 48 hrs and lysed. Equivalent amounts of cell lysates (5 ug per lane) were separated by SDS-PAGE and immunoblotted with anti-KCNJ3 (Cat# [TA504152]). Positive lysates [LY400811] (100ug) and [LC400811] (20ug) can be purchased separately from OriGene.



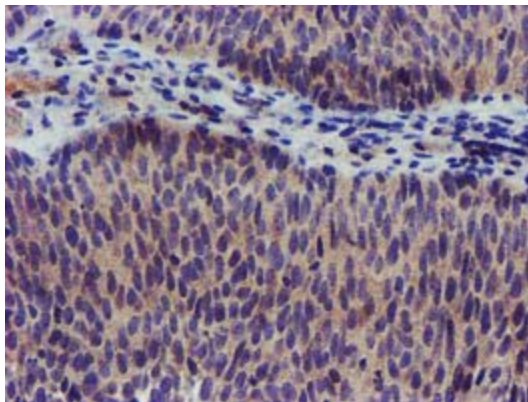
Western blot analysis of extracts (35ug) from 9 different cell lines by using anti-KCNJ3 monoclonal antibody.



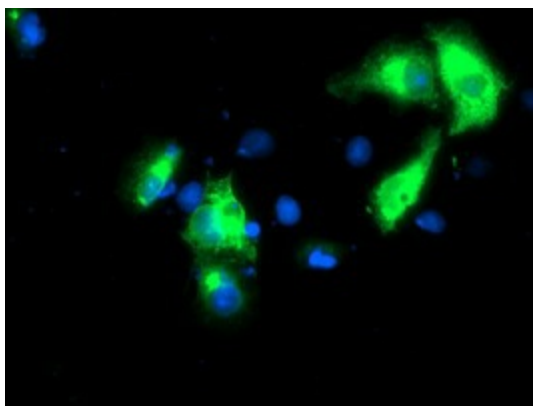
Western blot analysis of extracts (10ug) from a mouse cell line and 3 different mouse tissues by using anti-KCNJ3 monoclonal antibody (1:200).



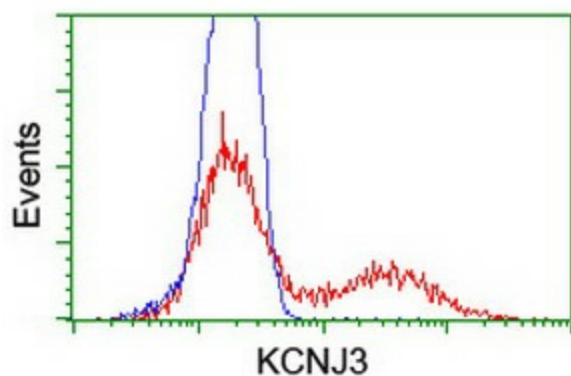
Immunohistochemical staining of paraffin-embedded Adenocarcinoma of Human endometrium tissue using anti-KCNJ3 mouse monoclonal antibody. (Heat-induced epitope retrieval by 10mM citric buffer, pH6.0, 100°C for 10min, [TA504152])



Immunohistochemical staining of paraffin-embedded Carcinoma of Human bladder tissue using anti-KCNJ3 mouse monoclonal antibody. (Heat-induced epitope retrieval by 10mM citric buffer, pH6.0, 100°C for 10min, [TA504152])



Anti-KCNJ3 mouse monoclonal antibody ([TA504152]) immunofluorescent staining of COS7 cells transiently transfected by pCMV6-ENTRY KCNJ3 ([RC205322]).



HEK293T cells transfected with either [RC205322] overexpress plasmid (Red) or empty vector control plasmid (Blue) were immunostained by anti-KCNJ3 antibody ([TA504152]), and then analyzed by flow cytometry.