

Product datasheet for **TA504135AM**

Cystatin S (CST4) Mouse Monoclonal Antibody (Biotin conjugated) [Clone ID: OTI2H10]

Product data:

Product Type:	Primary Antibodies
Clone Name:	OTI2H10
Applications:	FC, IF, WB
Recommended Dilution:	WB 1:2000, IF 1:50~100, FLOW 1:100
Reactivity:	Human
Host:	Mouse
Isotype:	IgG2b
Clonality:	Monoclonal
Immunogen:	Full length human recombinant protein of human CST4(NP_001890) produced in HEK293T cell.
Formulation:	PBS (pH 7.3) containing 1% BSA, 50% glycerol and 0.02% sodium azide.
Concentration:	0.5 mg/ml
Purification:	Purified from mouse ascites fluids or tissue culture supernatant by affinity chromatography (protein A/G)
Conjugation:	Biotin
Storage:	Store at -20°C as received.
Stability:	Stable for 12 months from date of receipt.
Predicted Protein Size:	14.1 kDa
Gene Name:	cystatin S
Database Link:	NP_001890 Entrez Gene 1472 Human P01036



[View online »](#)

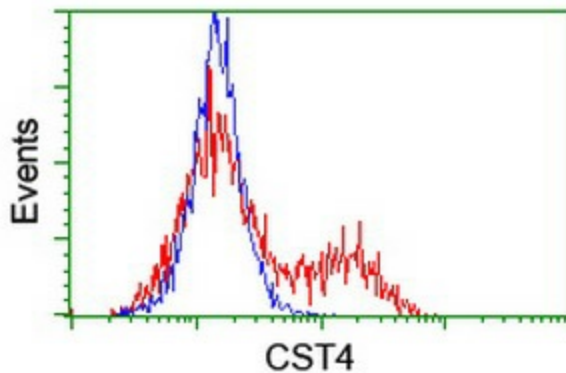
Background:

The cystatin superfamily encompasses proteins that contain multiple cystatin-like sequences. Some of the members are active cysteine protease inhibitors, while others have lost or perhaps never acquired this inhibitory activity. There are three inhibitory families in the superfamily, including the type 1 cystatins (stefins), type 2 cystatins and the kininogens. The type 2 cystatin proteins are a class of cysteine proteinase inhibitors found in a variety of human fluids and secretions. The cystatin locus on chromosome 20 contains the majority of the type 2 cystatin genes and pseudogenes. This gene is located in the cystatin locus and encodes a type 2 salivary cysteine peptidase inhibitor. The protein is an S-type cystatin, based on its high level of expression in saliva, tears and seminal plasma. The specific role in these fluids is unclear but antibacterial and antiviral activity is present, consistent with a protective function. [provided by RefSeq]

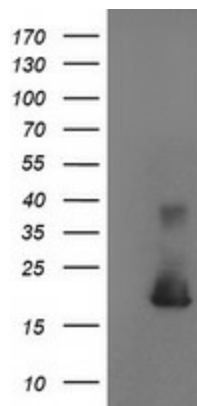
Synonyms:

MGC71923

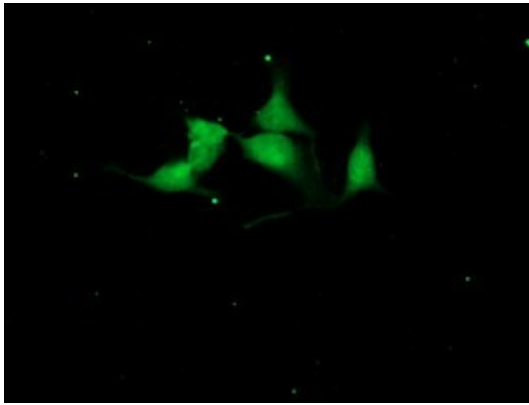
Product images:



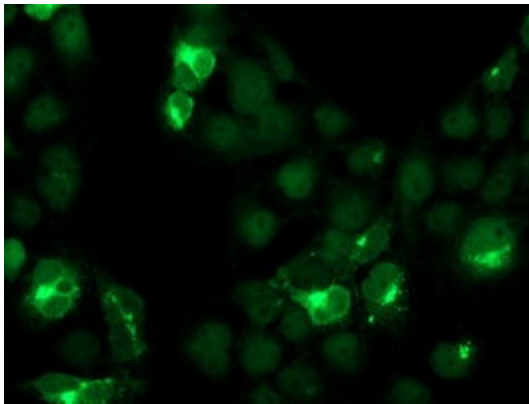
HEK293T cells transfected with either [RC209349] overexpress plasmid (Red) or empty vector control plasmid (Blue) were immunostained by anti-CST4 antibody ([TA504135]), and then analyzed by flow cytometry.



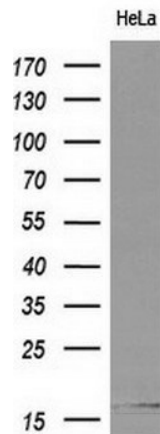
HEK293T cells were transfected with the pCMV6-ENTRY control (Cat# [PS100001], Left lane) or pCMV6-ENTRY CST4 (Cat# [RC209349], Right lane) cDNA for 48 hrs and lysed. Equivalent amounts of cell lysates (5 ug per lane) were separated by SDS-PAGE and immunoblotted with anti-CST4(Cat# [TA504135]). Positive lysates [LY400707] (100ug) and [LC400707] (20ug) can be purchased separately from OriGene.



Immunofluorescent staining of HeLa cells using anti-CST4 mouse monoclonal antibody ([TA504135]).



Western blot analysis of extracts (10ug) from HeLa cell line by using anti-CST4 monoclonal antibody at 1:200 dilution.



Western blot analysis of extracts (10ug) from 1 cell line by using anti-CST4 monoclonal antibody at 1:200 dilution.