

## Product datasheet for **TA504134S**

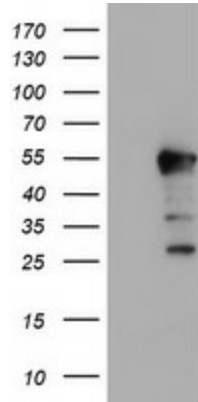
### HEXO (ERI1) Mouse Monoclonal Antibody [Clone ID: OTI1B3]

#### Product data:

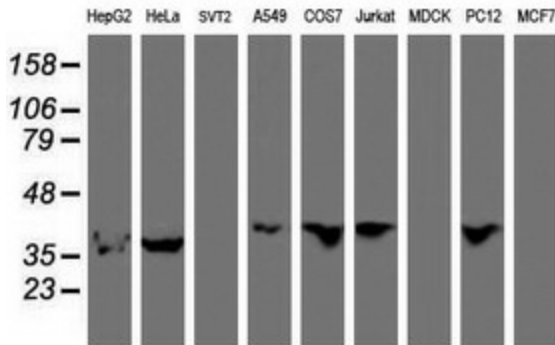
Product Type:	Primary Antibodies
Clone Name:	OTI1B3
Applications:	IHC, WB
Recommended Dilution:	WB 1:500~2000, IHC 1:150
Reactivity:	Human, Rat, Monkey
Host:	Mouse
Isotype:	IgG2b
Clonality:	Monoclonal
Immunogen:	Full length human recombinant protein of human ERI1(NP_699163) produced in HEK293T cell.
Formulation:	PBS (pH 7.3) containing 1% BSA, 50% glycerol and 0.02% sodium azide.
Concentration:	1.1 mg/ml
Purification:	Purified from mouse ascites fluids or tissue culture supernatant by affinity chromatography (protein A/G)
Conjugation:	Unconjugated
Storage:	Store at -20°C as received.
Stability:	Stable for 12 months from date of receipt.
Predicted Protein Size:	39.9 kDa
Gene Name:	exoribonuclease 1
Database Link:	<a href="#">NP_699163</a> <a href="#">Entrez Gene 361159 Rat</a> <a href="#">Entrez Gene 699381 Monkey</a> <a href="#">Entrez Gene 90459 Human</a> <a href="#">Q8IV48</a>
Synonyms:	3 HEXO; 3'HEXO; HEXO; THEX1



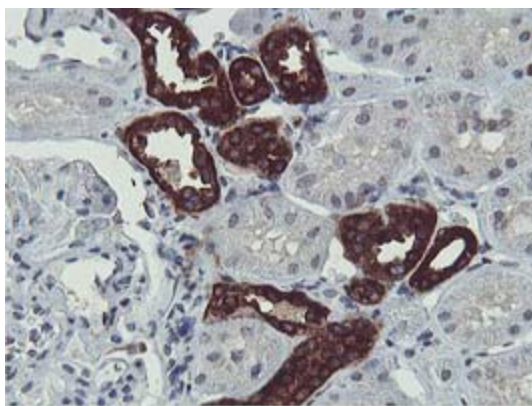
[View online »](#)

**Product images:**


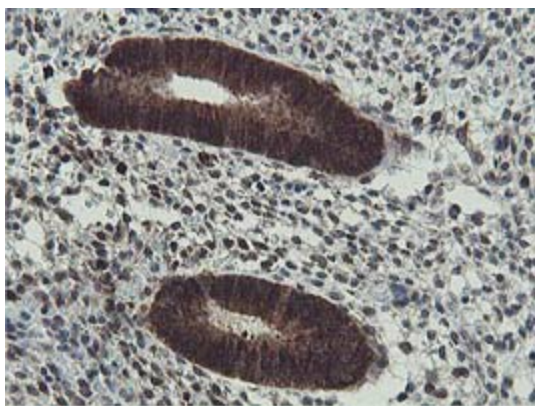
HEK293T cells were transfected with the pCMV6-ENTRY control (Cat# [PS100001], Left lane) or pCMV6-ENTRY ER11 (Cat# [RC206777], Right lane) cDNA for 48 hrs and lysed. Equivalent amounts of cell lysates (5 ug per lane) were separated by SDS-PAGE and immunoblotted with anti-ER11 (Cat# [TA504134]). Positive lysates [LY407051] (100ug) and [LC407051] (20ug) can be purchased separately from OriGene.



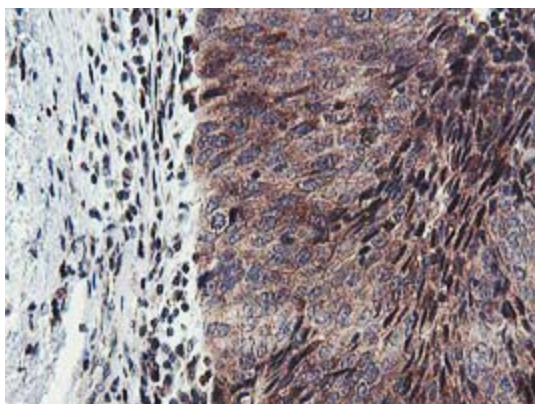
Western blot analysis of extracts (35ug) from 9 different cell lines by using anti-ER11 monoclonal antibody.



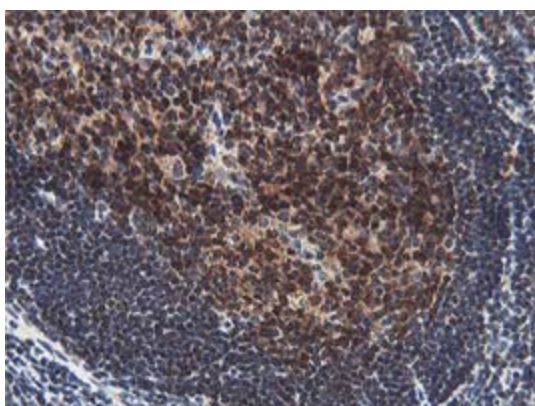
Immunohistochemical staining of paraffin-embedded Human Kidney tissue within the normal limits using anti-ER11 mouse monoclonal antibody. (Heat-induced epitope retrieval by 10mM citric buffer, pH6.0, 100°C for 10min, [TA504134])



Immunohistochemical staining of paraffin-embedded Human endometrium tissue within the normal limits using anti-ER11 mouse monoclonal antibody. (Heat-induced epitope retrieval by 10mM citric buffer, pH6.0, 100°C for 10min, [TA504134])



Immunohistochemical staining of paraffin-embedded Carcinoma of Human bladder tissue using anti-ER11 mouse monoclonal antibody. (Heat-induced epitope retrieval by 10mM citric buffer, pH6.0, 100°C for 10min, [TA504134])



Immunohistochemical staining of paraffin-embedded Human tonsil within the normal limits using anti-ER11 mouse monoclonal antibody. (Heat-induced epitope retrieval by 10mM citric buffer, pH6.0, 100°C for 10min, [TA504134])