

## Product datasheet for **TA504133S**

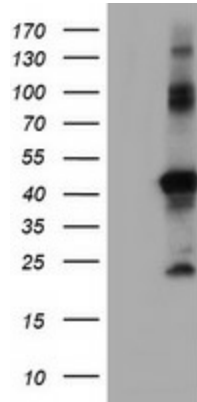
### **RNF113B Mouse Monoclonal Antibody [Clone ID: OTI1B10]**

#### **Product data:**

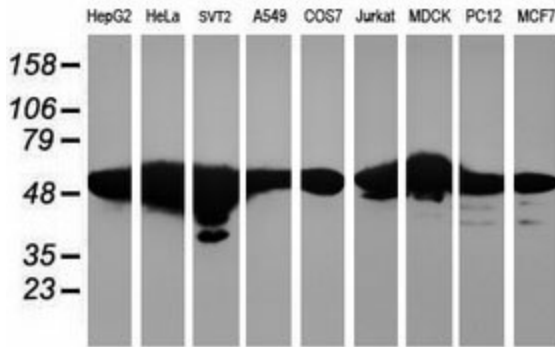
<b>Product Type:</b>	Primary Antibodies
<b>Clone Name:</b>	OTI1B10
<b>Applications:</b>	IF, IHC, WB
<b>Recommended Dilution:</b>	WB 1:500~2000, IHC 1:150, IF 1:100
<b>Reactivity:</b>	Human, Dog, Rat, Monkey, Mouse
<b>Host:</b>	Mouse
<b>Isotype:</b>	IgG1
<b>Clonality:</b>	Monoclonal
<b>Immunogen:</b>	Full length human recombinant protein of human RNF113B(NP_849192) produced in HEK293T cell.
<b>Formulation:</b>	PBS (pH 7.3) containing 1% BSA, 50% glycerol and 0.02% sodium azide.
<b>Concentration:</b>	0.71 mg/ml
<b>Purification:</b>	Purified from mouse ascites fluids or tissue culture supernatant by affinity chromatography (protein A/G)
<b>Conjugation:</b>	Unconjugated
<b>Storage:</b>	Store at -20°C as received.
<b>Stability:</b>	Stable for 12 months from date of receipt.
<b>Predicted Protein Size:</b>	36.1 kDa
<b>Gene Name:</b>	ring finger protein 113B
<b>Database Link:</b>	<a href="#">NP_849192</a> <a href="#">Entrez Gene 697578 Monkey</a> <a href="#">Entrez Gene 140432 Human</a> <a href="#">Q8IZP6</a>
<b>Synonyms:</b>	bA10G5.1; RNF161; ZNF183L1
<b>Protein Families:</b>	Druggable Genome



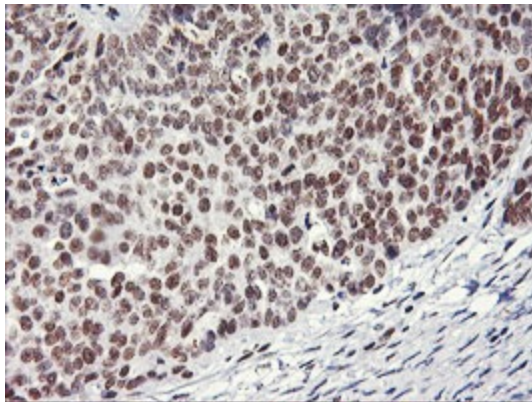
[View online »](#)

**Product images:**


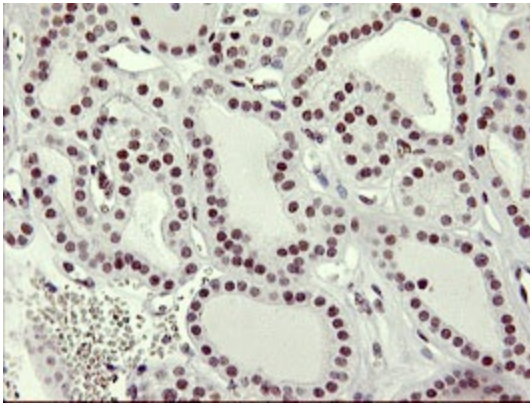
HEK293T cells were transfected with the pCMV6-ENTRY control (Left lane) or pCMV6-ENTRY RNF113B ([RC205407], Right lane) cDNA for 48 hrs and lysed. Equivalent amounts of cell lysates (5 ug per lane) were separated by SDS-PAGE and immunoblotted with anti-RNF113B. Positive lysates [LY405825] (100ug) and [LC405825] (20ug) can be purchased separately from OriGene.



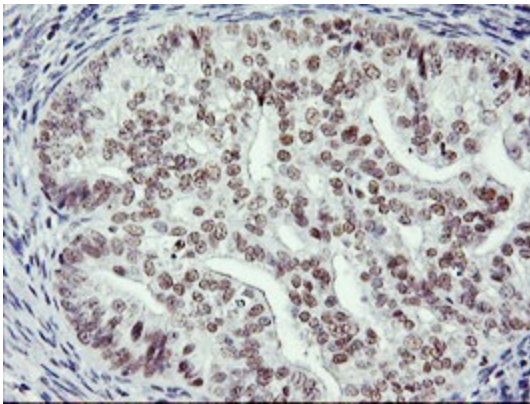
Western blot analysis of extracts (35ug) from 9 different cell lines by using anti-RNF113B monoclonal antibody.



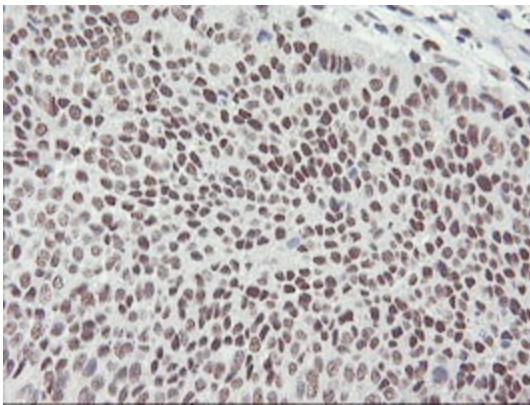
Immunohistochemical staining of paraffin-embedded Adenocarcinoma of Human ovary tissue using anti-RNF113B mouse monoclonal antibody. (Heat-induced epitope retrieval by 10mM citric buffer, pH6.0, 100°C for 10min, [TA504133])



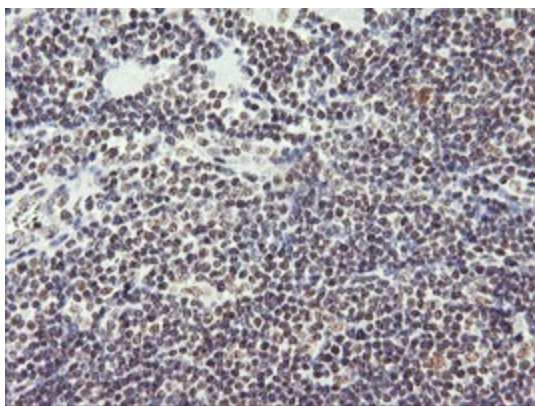
Immunohistochemical staining of paraffin-embedded Carcinoma of Human thyroid tissue using anti-RNF113B mouse monoclonal antibody. (Heat-induced epitope retrieval by 10mM citric buffer, pH6.0, 100°C for 10min, [TA504133])



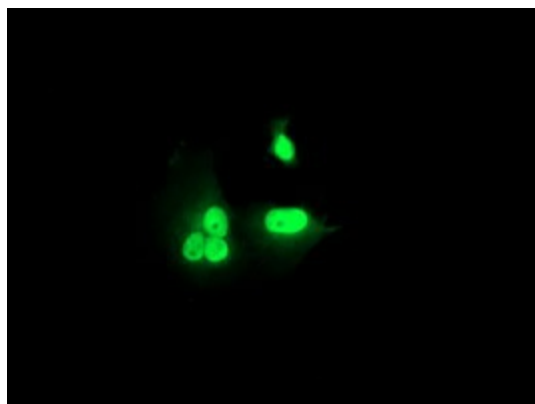
Immunohistochemical staining of paraffin-embedded Adenocarcinoma of Human endometrium tissue using anti-RNF113B mouse monoclonal antibody. (Heat-induced epitope retrieval by 10mM citric buffer, pH6.0, 100°C for 10min, [TA504133])



Immunohistochemical staining of paraffin-embedded Carcinoma of Human bladder tissue using anti-RNF113B mouse monoclonal antibody. (Heat-induced epitope retrieval by 10mM citric buffer, pH6.0, 100°C for 10min, [TA504133])



Immunohistochemical staining of paraffin-embedded Human lymphoma tissue using anti-RNF113B mouse monoclonal antibody. (Heat-induced epitope retrieval by 10mM citric buffer, pH6.0, 100°C for 10min, [TA504133])



Anti-RNF113B mouse monoclonal antibody ([TA504133]) immunofluorescent staining of COS7 cells transiently transfected by pCMV6-ENTRY RNF113B ([RC205407]).