

Product datasheet for **TA504130BM**

USP10 Mouse Monoclonal Antibody (HRP conjugated) [Clone ID: OTI1A10]

Product data:

Product Type:	Primary Antibodies
Clone Name:	OTI1A10
Applications:	FC, IHC, WB
Recommended Dilution:	WB 1:2000, IHC 1:150, FLOW 1:100
Reactivity:	Human
Host:	Mouse
Isotype:	IgG2a
Clonality:	Monoclonal
Immunogen:	Full length human recombinant protein of human USP10(NP_005144) produced in HEK293T cell.
Formulation:	PBS (pH 7.3) containing 1% BSA, 50% glycerol.
Concentration:	0.5 mg/ml
Purification:	Purified from mouse ascites fluids or tissue culture supernatant by affinity chromatography (protein A/G)
Conjugation:	HRP
Storage:	Store at -20°C as received.
Stability:	Stable for 12 months from date of receipt.
Predicted Protein Size:	87 kDa
Gene Name:	ubiquitin specific peptidase 10
Database Link:	NP_005144 Entrez Gene 9100 Human Q14694



[View online »](#)

Background:

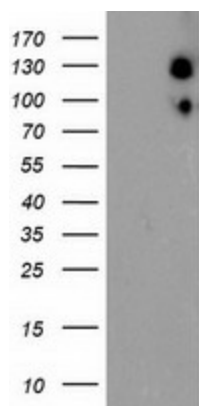
Ubiquitin is a highly conserved protein that is covalently linked to other proteins to regulate their function and degradation. This gene encodes a member of the ubiquitin-specific protease family of cysteine proteases. The enzyme specifically cleaves ubiquitin from ubiquitin-conjugated protein substrates. The protein is found in the nucleus and cytoplasm. It functions as a co-factor of the DNA-bound androgen receptor complex, and is inhibited by a protein in the Ras-GTPase pathway. The human genome contains several pseudogenes similar to this gene. [provided by RefSeq, Jul 2008]

Synonyms:

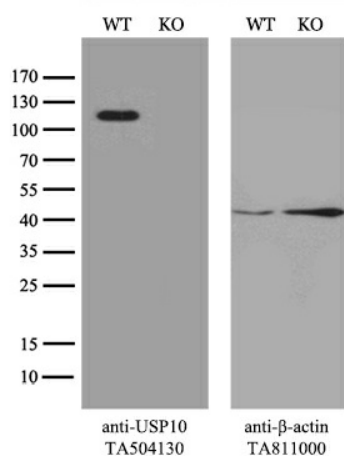
UBPO

Protein Families:

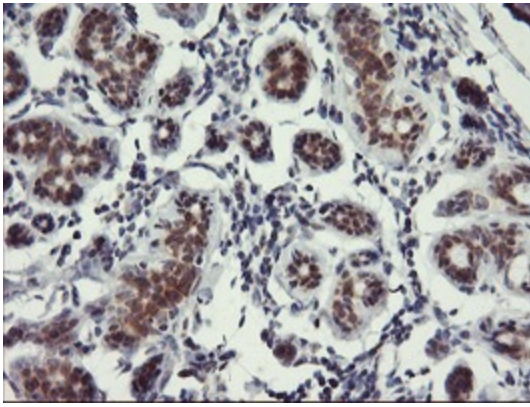
Druggable Genome, Protease

Product images:


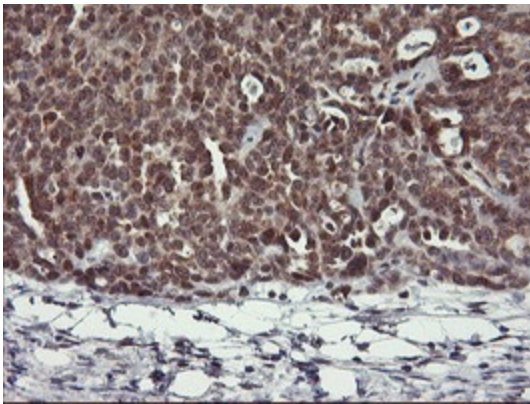
HEK293T cells were transfected with the pCMV6-ENTRY control (Left lane) or pCMV6-ENTRY USP10 [RC200835], Right lane) cDNA for 48 hrs and lysed. Equivalent amounts of cell lysates (5 ug per lane) were separated by SDS-PAGE and immunoblotted with anti-USP10. Positive lysates [LY417493] (100ug) and [LC417493] (20ug) can be purchased separately from OriGene.



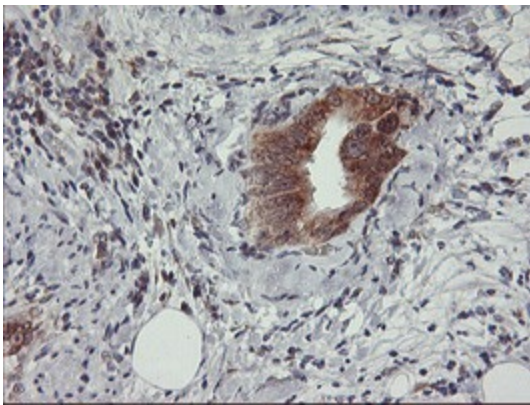
Equivalent amounts of cell lysates (10 ug per lane) of wild-type HeLa cells (WT, Cat# LC810HELA) and USP10-Knockout HeLa cells (KO, Cat# [LC810881]) were separated by SDS-PAGE and immunoblotted with anti-USP10 monoclonal antibody [TA504130], (1:500). Then the blotted membrane was stripped and reprobed with anti-beta-actin antibody ([TA811000]) as a loading control.



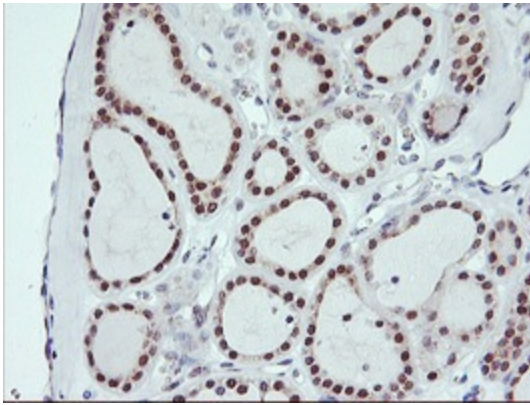
Immunohistochemical staining of paraffin-embedded Human breast tissue within the normal limits using anti-USP10 mouse monoclonal antibody. (Heat-induced epitope retrieval by 10mM citric buffer, pH6.0, 100°C for 10min, [TA504130])



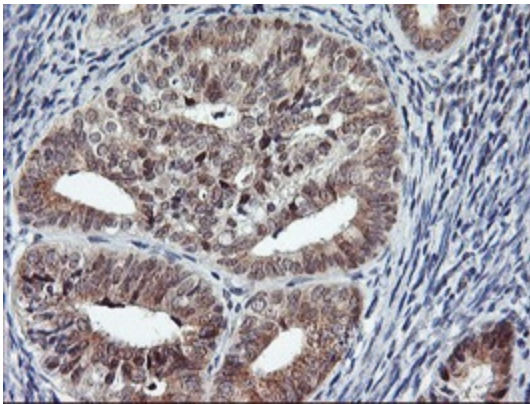
Immunohistochemical staining of paraffin-embedded Adenocarcinoma of Human ovary tissue using anti-USP10 mouse monoclonal antibody. (Heat-induced epitope retrieval by 10mM citric buffer, pH6.0, 100°C for 10min, [TA504130])



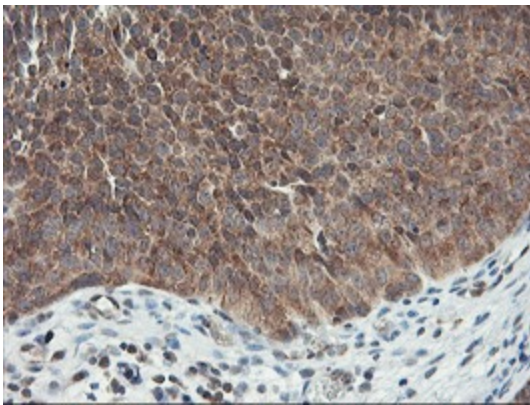
Immunohistochemical staining of paraffin-embedded Carcinoma of Human pancreas tissue using anti-USP10 mouse monoclonal antibody. (Heat-induced epitope retrieval by 10mM citric buffer, pH6.0, 100°C for 10min, [TA504130])



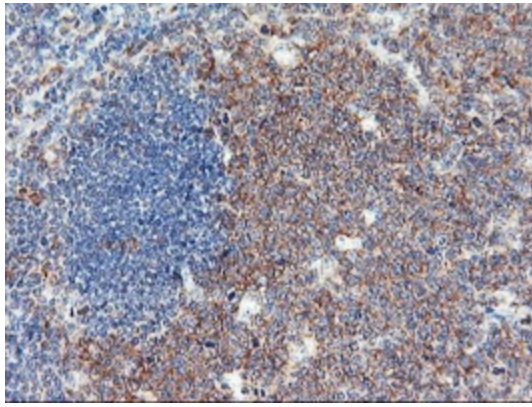
Immunohistochemical staining of paraffin-embedded Carcinoma of Human thyroid tissue using anti-USP10 mouse monoclonal antibody. (Heat-induced epitope retrieval by 10mM citric buffer, pH6.0, 100°C for 10min, [TA504130])



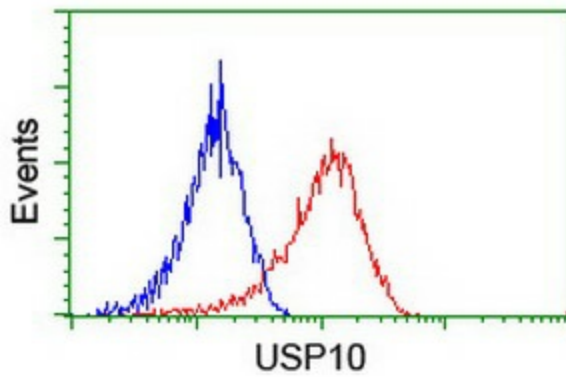
Immunohistochemical staining of paraffin-embedded Adenocarcinoma of Human endometrium tissue using anti-USP10 mouse monoclonal antibody. (Heat-induced epitope retrieval by 10mM citric buffer, pH6.0, 100°C for 10min, [TA504130])



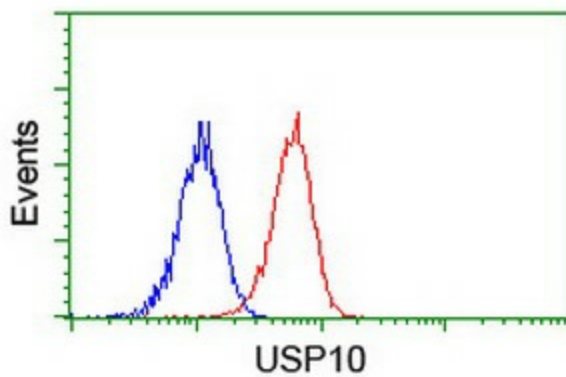
Immunohistochemical staining of paraffin-embedded Carcinoma of Human bladder tissue using anti-USP10 mouse monoclonal antibody. (Heat-induced epitope retrieval by 10mM citric buffer, pH6.0, 100°C for 10min, [TA504130])



Immunohistochemical staining of paraffin-embedded Human tonsil within the normal limits using anti-USP10 mouse monoclonal antibody. (Heat-induced epitope retrieval by 10mM citric buffer, pH6.0, 100°C for 10min, [TA504130])



Flow cytometric Analysis of HeLa cells, using anti-USP10 antibody ([TA504130]), (Red), compared to a nonspecific negative control antibody, (Blue).



Flow cytometric Analysis of Jurkat cells, using anti-USP10 antibody ([TA504130]), (Red), compared to a nonspecific negative control antibody, (Blue).