

## Product datasheet for **TA504111AM**

### **GOLPH2 (GOLM1) Mouse Monoclonal Antibody (Biotin conjugated) [Clone ID: OTI3D7]**

#### **Product data:**

|                         |                                                                                                           |
|-------------------------|-----------------------------------------------------------------------------------------------------------|
| Product Type:           | Primary Antibodies                                                                                        |
| Clone Name:             | OTI3D7                                                                                                    |
| Applications:           | IHC, WB                                                                                                   |
| Recommended Dilution:   | WB 1:2000, IHC 1:150                                                                                      |
| Reactivity:             | Human                                                                                                     |
| Host:                   | Mouse                                                                                                     |
| Isotype:                | IgG2b                                                                                                     |
| Clonality:              | Monoclonal                                                                                                |
| Immunogen:              | Full length human recombinant protein of human GOLM1(NP_808800) produced in HEK293T cell.                 |
| Formulation:            | PBS (pH 7.3) containing 1% BSA, 50% glycerol and 0.02% sodium azide.                                      |
| Concentration:          | 0.5 mg/ml                                                                                                 |
| Purification:           | Purified from mouse ascites fluids or tissue culture supernatant by affinity chromatography (protein A/G) |
| Conjugation:            | Biotin                                                                                                    |
| Storage:                | Store at -20°C as received.                                                                               |
| Stability:              | Stable for 12 months from date of receipt.                                                                |
| Predicted Protein Size: | 45.2 kDa                                                                                                  |
| Gene Name:              | golgi membrane protein 1                                                                                  |
| Database Link:          | <a href="#">NP_808800</a><br><a href="#">Entrez Gene 51280 Human</a><br><a href="#">Q8NBJ4</a>            |



[View online »](#)

**Background:**

The Golgi complex plays a key role in the sorting and modification of proteins exported from the endoplasmic reticulum. The protein encoded by this gene is a type II Golgi transmembrane protein. It processes proteins synthesized in the rough endoplasmic reticulum and assists in the transport of protein cargo through the Golgi apparatus. The expression of this gene has been observed to be upregulated in response to viral infection. Alternatively spliced transcript variants encoding the same protein have been described for this gene. [provided by RefSeq]

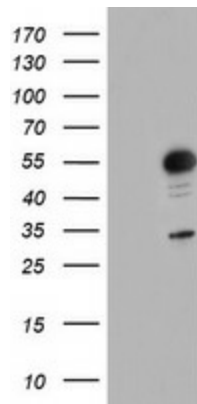
**Synonyms:**

bA379P1.3; C9orf155; GOLPH2; GP73; HEL46; PSEC0257

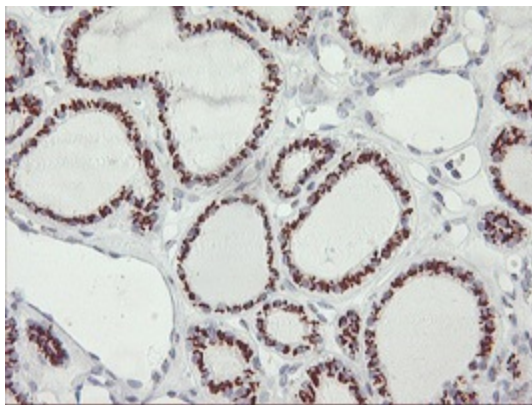
**Protein Families:**

Transmembrane

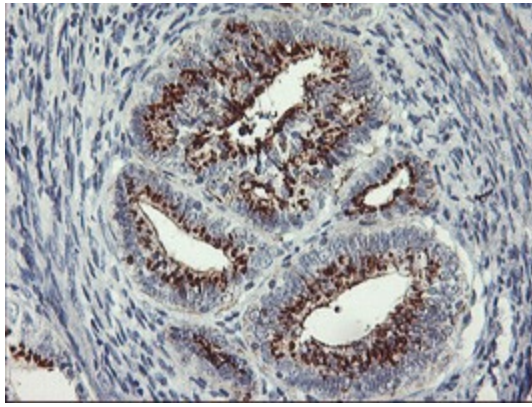
**Product images:**



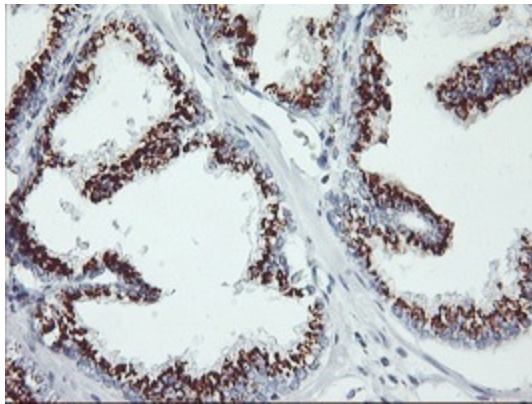
HEK293T cells were transfected with the pCMV6-ENTRY control (Left lane) or pCMV6-ENTRY GOLM1 ([RC200086], Right lane) cDNA for 48 hrs and lysed. Equivalent amounts of cell lysates (5 ug per lane) were separated by SDS-PAGE and immunoblotted with anti-GOLM1. Positive lysates [LY406091] (100ug) and [LC406091] (20ug) can be purchased separately from OriGene.



Immunohistochemical staining of paraffin-embedded Carcinoma of Human thyroid tissue using anti-GOLM1 mouse monoclonal antibody. (Heat-induced epitope retrieval by 10mM citric buffer, pH6.0, 100°C for 10min, [TA504111])



Immunohistochemical staining of paraffin-embedded Adenocarcinoma of Human endometrium tissue using anti-GOLM1 mouse monoclonal antibody. (Heat-induced epitope retrieval by 10mM citric buffer, pH6.0, 100°C for 10min, [TA504111])



Immunohistochemical staining of paraffin-embedded Human prostate tissue within the normal limits using anti-GOLM1 mouse monoclonal antibody. (Heat-induced epitope retrieval by 10mM citric buffer, pH6.0, 100°C for 10min, [TA504111])