

## Product datasheet for **TA504110BM**

### **PFD6 (PFDN6) Mouse Monoclonal Antibody (HRP conjugated) [Clone ID: OTI4E10]**

#### **Product data:**

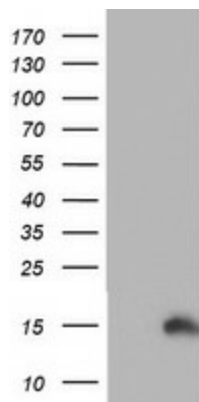
<b>Product Type:</b>	Primary Antibodies
<b>Clone Name:</b>	OTI4E10
<b>Applications:</b>	FC, IHC, WB
<b>Recommended Dilution:</b>	WB 1:2000, IHC 1:150, FLOW 1:100
<b>Reactivity:</b>	Human, Mouse, Rat
<b>Host:</b>	Mouse
<b>Isotype:</b>	IgG1
<b>Clonality:</b>	Monoclonal
<b>Immunogen:</b>	Human recombinant protein fragment corresponding to amino acids 2-129 of human PFDN6(NP_055075) produced in E.coli.
<b>Formulation:</b>	PBS (pH 7.3) containing 1% BSA, 50% glycerol.
<b>Concentration:</b>	0.5 mg/ml
<b>Purification:</b>	Purified from mouse ascites fluids or tissue culture supernatant by affinity chromatography (protein A/G)
<b>Conjugation:</b>	HRP
<b>Storage:</b>	Store at -20°C as received.
<b>Stability:</b>	Stable for 12 months from date of receipt.
<b>Predicted Protein Size:</b>	14.4 kDa
<b>Gene Name:</b>	prefoldin subunit 6
<b>Database Link:</b>	<a href="#">NP_055075</a> <a href="#">Entrez Gene 14976 Mouse</a> <a href="#">Entrez Gene 309629 Rat</a> <a href="#">Entrez Gene 10471 Human</a> <a href="#">O15212</a>
<b>Background:</b>	PFDN6 is a subunit of the heteromeric prefoldin complex that chaperones nascent actin (see MIM 102560) and alpha- and beta-tubulin (see MIM 602529 and MIM 191130, respectively) chains pending their transfer to the cytosolic chaperonin containing TCP1 (MIM 186980) (CCT) complex (Hansen et al., 1999 [PubMed 10209023]). [supplied by OMIM]
<b>Synonyms:</b>	H2-KE2; HKE2; KE-2; PFD6



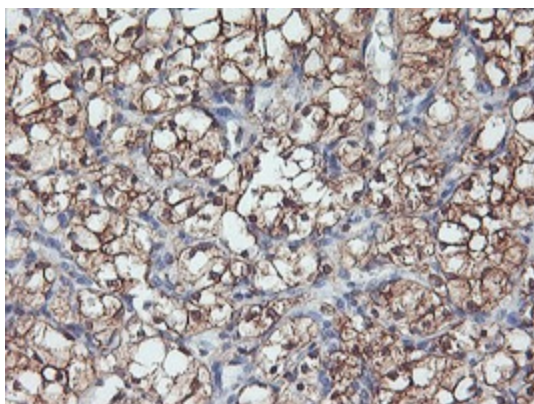
[View online »](#)

Protein Families: Stem cell - Pluripotency

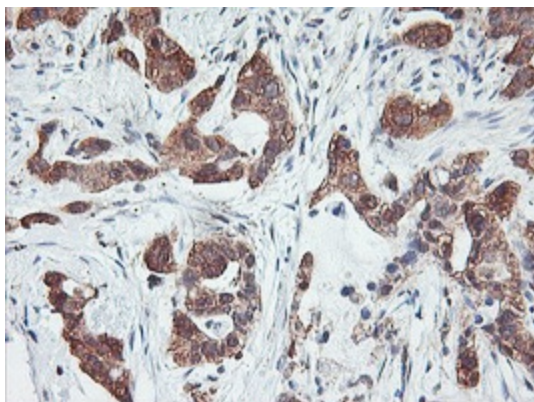
## Product images:



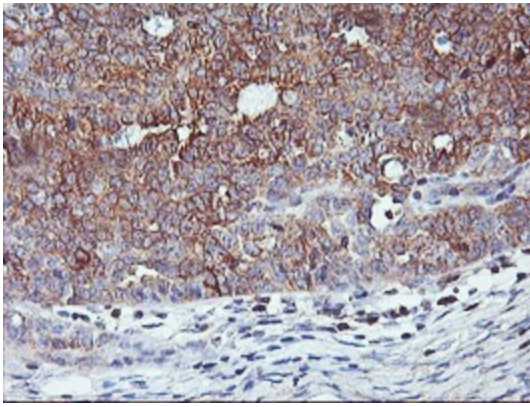
HEK293T cells were transfected with the pCMV6-ENTRY control (Cat# [PS100001], Left lane) or pCMV6-ENTRY PFDN6 (Cat# [RC207901], Right lane) cDNA for 48 hrs and lysed. Equivalent amounts of cell lysates (5 ug per lane) were separated by SDS-PAGE and immunoblotted with anti-PFDN6 (Cat# [TA504110]). Positive lysates [LY415391] (100ug) and [LC415391] (20ug) can be purchased separately from OriGene.



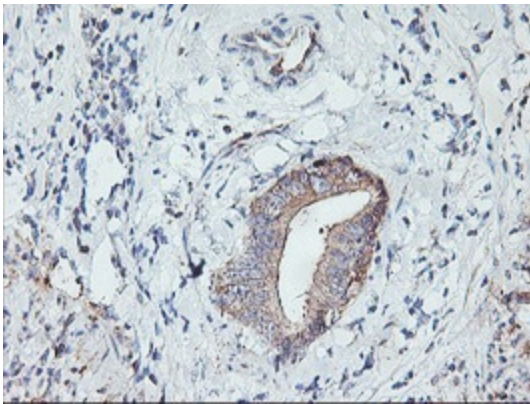
Immunohistochemical staining of paraffin-embedded Carcinoma of Human kidney tissue using anti-PFDN6 mouse monoclonal antibody. (Heat-induced epitope retrieval by 10mM citric buffer, pH6.0, 100°C for 10min, [TA504110])



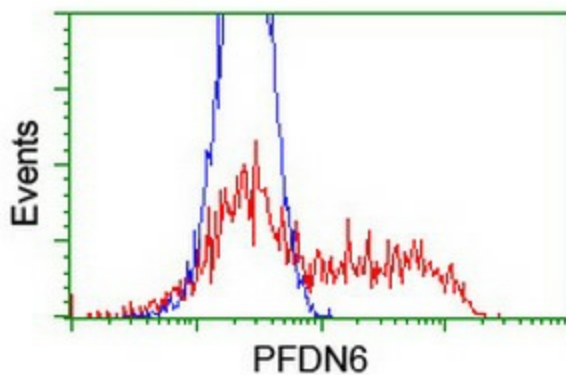
Immunohistochemical staining of paraffin-embedded Carcinoma of Human lung tissue using anti-PFDN6 mouse monoclonal antibody. (Heat-induced epitope retrieval by 10mM citric buffer, pH6.0, 100°C for 10min, [TA504110])



Immunohistochemical staining of paraffin-embedded Adenocarcinoma of Human ovary tissue using anti-PFDN6 mouse monoclonal antibody. (Heat-induced epitope retrieval by 10mM citric buffer, pH6.0, 100°C for 10min, [TA504110])



Immunohistochemical staining of paraffin-embedded Carcinoma of Human pancreas tissue using anti-PFDN6 mouse monoclonal antibody. (Heat-induced epitope retrieval by 10mM citric buffer, pH6.0, 100°C for 10min, [TA504110])



HEK293T cells transfected with either [RC207901] overexpress plasmid (Red) or empty vector control plasmid (Blue) were immunostained by anti-PFDN6 antibody ([TA504110]), and then analyzed by flow cytometry.