

## Product datasheet for **TA504093M**

### RTN4IP1 Mouse Monoclonal Antibody [Clone ID: OTI1A8]

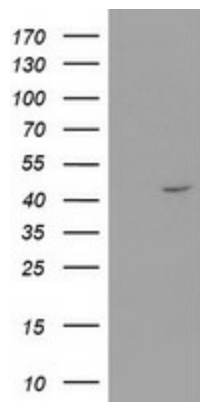
#### Product data:

|                         |   |
|-------------------------|---|
| Product Type:           | Primary Antibodies  |
| Clone Name:             | OTI1A8  |
| Applications:           | IHC, WB   |
| Recommended Dilution:   | WB 1:500~2000, IHC 1:150  |
| Reactivity:             | Human, Mouse, Rat   |
| Host:                   | Mouse   |
| Isotype:                | IgG2b   |
| Clonality:              | Monoclonal  |
| Immunogen:              | Human recombinant protein fragment corresponding to amino acids 41-279 of human RTN4IP1(NP_116119) produced in E.coli.  |
| Formulation:            | PBS (pH 7.3) containing 1% BSA, 50% glycerol and 0.02% sodium azide.  |
| Concentration:          | 1.1 mg/ml   |
| Purification:           | Purified from mouse ascites fluids or tissue culture supernatant by affinity chromatography (protein A/G)   |
| Conjugation:            | Unconjugated  |
| Storage:                | Store at -20°C as received.   |
| Stability:              | Stable for 12 months from date of receipt.  |
| Predicted Protein Size: | 38.9 kDa  |
| Gene Name:              | reticulon 4 interacting protein 1   |
| Database Link:          | <a href="#">NP_116119</a><br><a href="#">Entrez Gene 170728 Mouse</a> <a href="#">Entrez Gene 309912 Rat</a> <a href="#">Entrez Gene 84816 Human</a><br><a href="#">Q8WWV3</a>  |
| Background:             | This gene encodes a novel mitochondrial protein that interacts with reticulon 4, which is a potent inhibitor of regeneration following spinal cord injury. The interaction of reticulon 4 with mitochondrial proteins may provide insight into the mechanisms for reticulon-induced inhibition of neurite growth. [provided by RefSeq]. COMPLETENESS: complete on the 3' end. |
| Synonyms:               | NIMP; OPA10   |

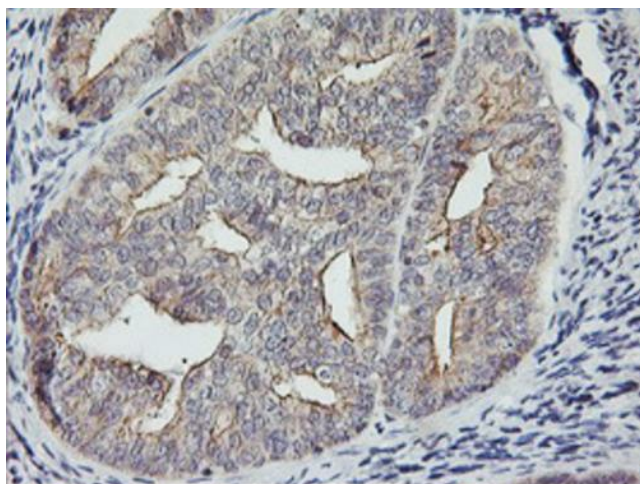

[View online »](#)

Protein Families: Druggable Genome

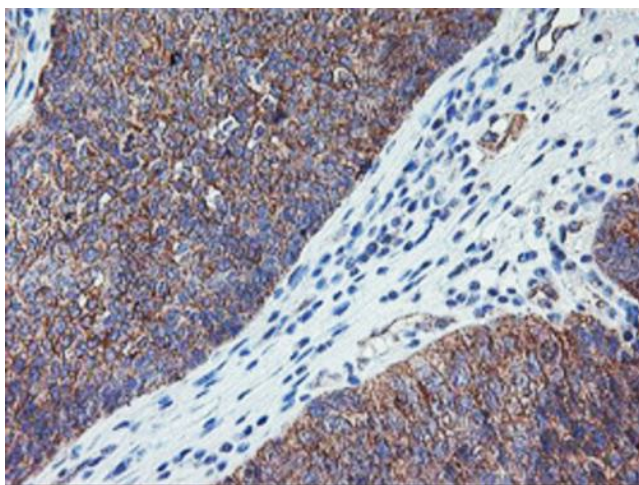
## Product images:



HEK293T cells were transfected with the pCMV6-ENTRY control (Left lane) or pCMV6-ENTRY RTN4IP1 ([RC202957], Right lane) cDNA for 48 hrs and lysed. Equivalent amounts of cell lysates (5 ug per lane) were separated by SDS-PAGE and immunoblotted with anti-RTN4IP1. Positive lysates [LY409966] (100ug) and [LC409966] (20ug) can be purchased separately from OriGene.



Immunohistochemical staining of paraffin-embedded Adenocarcinoma of Human endometrium tissue using anti-RTN4IP1 mouse monoclonal antibody. Heat-induced epitope retrieval by EDTA solution buffer pH 8.0 at 120°C for 3 min.



Immunohistochemical staining of paraffin-embedded Carcinoma of Human bladder tissue using anti-RTN4IP1 mouse monoclonal antibody. Heat-induced epitope retrieval by EDTA solution buffer pH 8.0 at 120°C for 3 min.