

Product datasheet for **TA504092S**

MKRN1 Mouse Monoclonal Antibody [Clone ID: OTI2C8]

Product data:

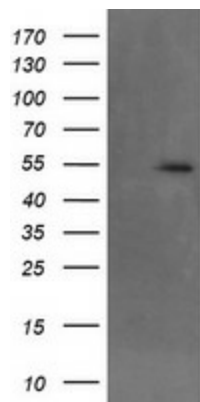
Product Type:	Primary Antibodies
Clone Name:	OTI2C8
Applications:	FC, IHC, WB
Recommended Dilution:	WB 1:1000, IHC 1:150, FLOW 1:100
Reactivity:	Human, Mouse
Host:	Mouse
Isotype:	IgG2b
Clonality:	Monoclonal
Immunogen:	Full length human recombinant protein of human MKRN1(NP_038474) produced in HEK293T cell.
Formulation:	PBS (pH 7.3) containing 1% BSA, 50% glycerol and 0.02% sodium azide.
Concentration:	1 mg/ml
Purification:	Purified from mouse ascites fluids or tissue culture supernatant by affinity chromatography (protein A/G)
Conjugation:	Unconjugated
Storage:	Store at -20°C as received.
Stability:	Stable for 12 months from date of receipt.
Predicted Protein Size:	53.2 kDa
Gene Name:	makorin ring finger protein 1
Database Link:	NP_038474 Entrez Gene 54484 Mouse Entrez Gene 23608 Human Q9UHC7
Background:	The Makorin ring finger protein-1 gene (MKRN1) is a highly transcribed, intron-containing source for a family of intronless mammalian genes encoding a novel class of zinc finger proteins. Phylogenetic analyses indicate that the MKRN1 gene is the ancestral founder of this gene family (Gray et al., 2000 [PubMed 10843807]). [supplied by OMIM, Mar 2008]
Synonyms:	RNF61



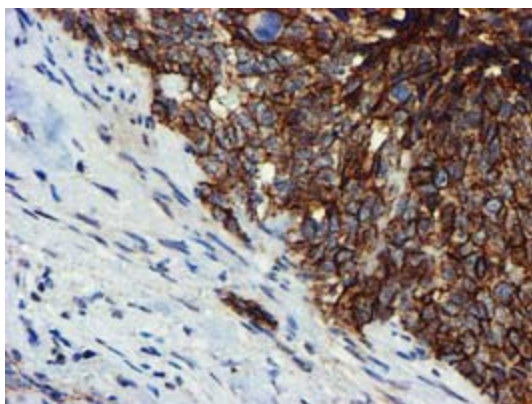
[View online »](#)

Protein Families: Druggable Genome

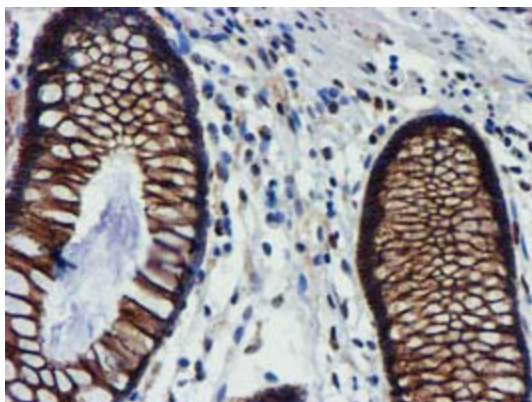
Product images:



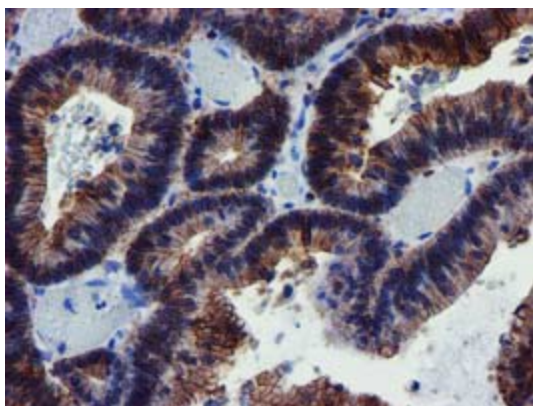
HEK293T cells were transfected with the pCMV6-ENTRY control (Cat# [PS100001], Left lane) or pCMV6-ENTRY MKRN1 (Cat# [RC206848], Right lane) cDNA for 48 hrs and lysed. Equivalent amounts of cell lysates (5 ug per lane) were separated by SDS-PAGE and immunoblotted with anti-MKRN1 (Cat# [TA504092]). Positive lysates [LY415580] (100ug) and [LC415580] (20ug) can be purchased separately from OriGene.



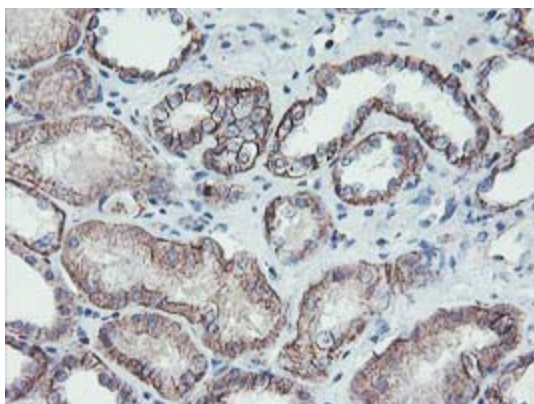
Immunohistochemical staining of paraffin-embedded Adenocarcinoma of Human breast tissue using anti-MKRN1 mouse monoclonal antibody. (Heat-induced epitope retrieval by 10mM citric buffer, pH6.0, 120°C for 3min, [TA504092])



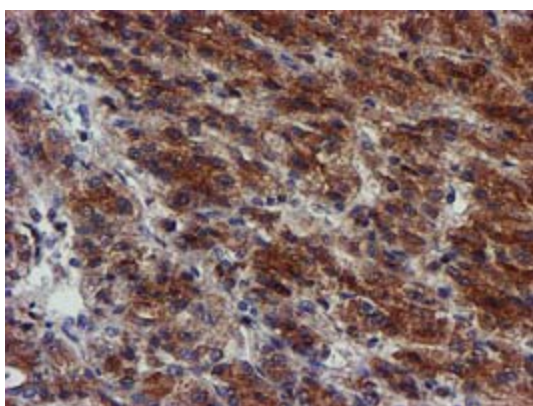
Immunohistochemical staining of paraffin-embedded Human colon tissue within the normal limits using anti-MKRN1 mouse monoclonal antibody. (Heat-induced epitope retrieval by 10mM citric buffer, pH6.0, 120°C for 3min, [TA504092])



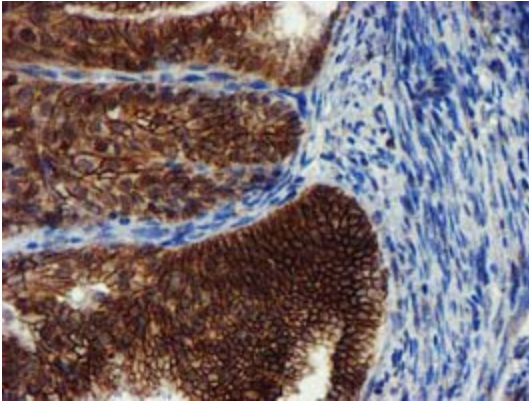
Immunohistochemical staining of paraffin-embedded Adenocarcinoma of Human colon tissue using anti-MKRN1 mouse monoclonal antibody. (Heat-induced epitope retrieval by 10mM citric buffer, pH6.0, 120°C for 3min, [TA504092])



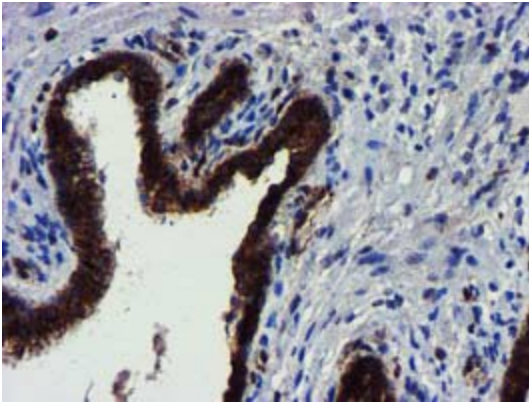
Immunohistochemical staining of paraffin-embedded Human Kidney tissue within the normal limits using anti-MKRN1 mouse monoclonal antibody. (Heat-induced epitope retrieval by 10mM citric buffer, pH6.0, 120°C for 3min, [TA504092])



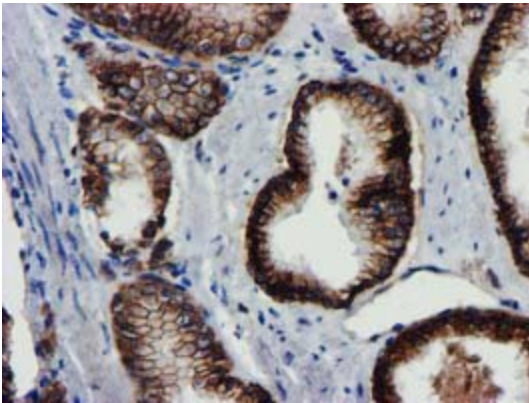
Immunohistochemical staining of paraffin-embedded Carcinoma of Human liver tissue using anti-MKRN1 mouse monoclonal antibody. (Heat-induced epitope retrieval by 10mM citric buffer, pH6.0, 120°C for 3min, [TA504092])



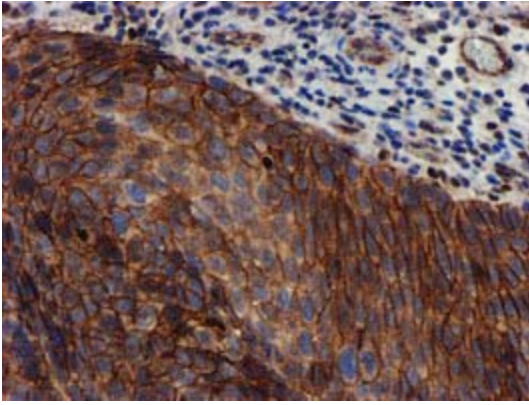
Immunohistochemical staining of paraffin-embedded Adenocarcinoma of Human endometrium tissue using anti-MKRN1 mouse monoclonal antibody. (Heat-induced epitope retrieval by 10mM citric buffer, pH6.0, 120°C for 3min, [TA504092])



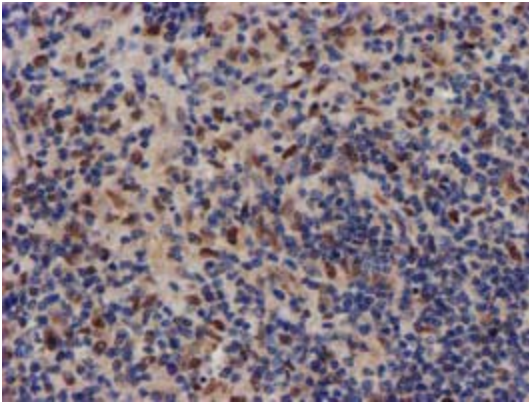
Immunohistochemical staining of paraffin-embedded Human prostate tissue within the normal limits using anti-MKRN1 mouse monoclonal antibody. (Heat-induced epitope retrieval by 10mM citric buffer, pH6.0, 120°C for 3min, [TA504092])



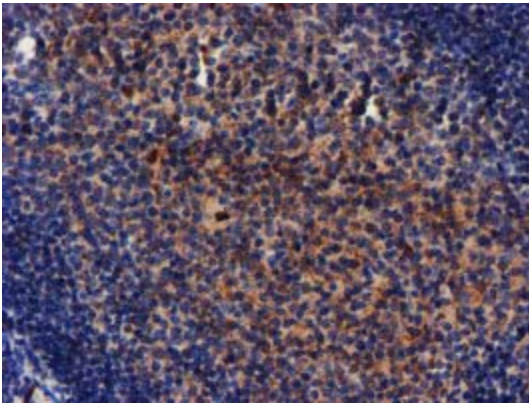
Immunohistochemical staining of paraffin-embedded Carcinoma of Human prostate tissue using anti-MKRN1 mouse monoclonal antibody. (Heat-induced epitope retrieval by 10mM citric buffer, pH6.0, 120°C for 3min, [TA504092])



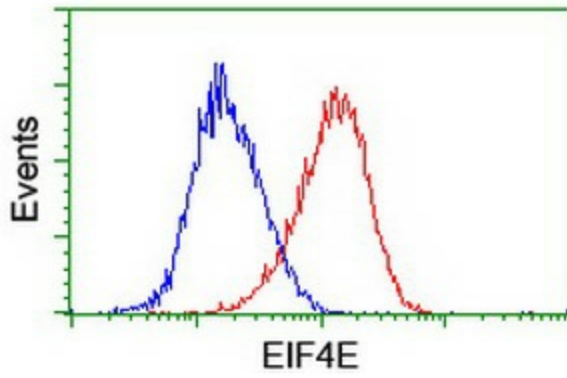
Immunohistochemical staining of paraffin-embedded Carcinoma of Human bladder tissue using anti-MKRN1 mouse monoclonal antibody. (Heat-induced epitope retrieval by 10mM citric buffer, pH6.0, 120°C for 3min, [TA504092])



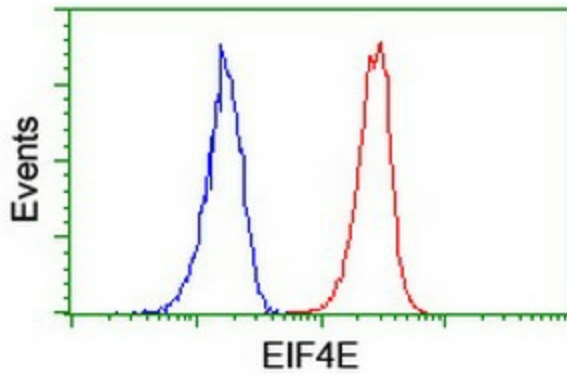
Immunohistochemical staining of paraffin-embedded Human lymphoma tissue using anti-MKRN1 mouse monoclonal antibody. (Heat-induced epitope retrieval by 10mM citric buffer, pH6.0, 120°C for 3min, [TA504092])



Immunohistochemical staining of paraffin-embedded Human tonsil within the normal limits using anti-MKRN1 mouse monoclonal antibody. (Heat-induced epitope retrieval by 10mM citric buffer, pH6.0, 120°C for 3min, [TA504092])



Flow cytometric Analysis of HeLa cells, using anti-MKRN1 antibody ([TA504092]), (Red), compared to a nonspecific negative control antibody, (Blue).



Flow cytometric Analysis of Jurkat cells, using anti-MKRN1 antibody ([TA504092]), (Red), compared to a nonspecific negative control antibody, (Blue).