

## Product datasheet for **TA504091M**

### LECT2 Mouse Monoclonal Antibody [Clone ID: OTI2A11]

#### Product data:

Product Type:	Primary Antibodies
Clone Name:	OTI2A11
Applications:	IHC, WB
Recommended Dilution:	WB 1:500, IHC 1:150
Reactivity:	Human, Mouse, Rat
Host:	Mouse
Isotype:	IgG1
Clonality:	Monoclonal
Immunogen:	Human recombinant protein fragment corresponding to amino acids 19-151 of human LECT2(NP_002293) produced in E.coli.
Formulation:	PBS (pH 7.3) containing 1% BSA, 50% glycerol and 0.02% sodium azide.
Concentration:	1 mg/ml
Purification:	Purified from mouse ascites fluids or tissue culture supernatant by affinity chromatography (protein A/G)
Conjugation:	Unconjugated
Storage:	Store at -20°C as received.
Stability:	Stable for 12 months from date of receipt.
Predicted Protein Size:	14.5 kDa
Gene Name:	leukocyte cell derived chemotaxin 2
Database Link:	<a href="#">NP_002293</a> <a href="#">Entrez Gene 3950 Human</a> <a href="#">O14960</a>
Background:	This gene encodes a secreted, 16 kDa protein that acts as a chemotactic factor to neutrophils and stimulates the growth of chondrocytes and osteoblasts. This protein has high sequence similarity to the chondromodulin repeat regions of the chicken myb-induced myeloid 1 protein. A polymorphism in this gene may be associated with rheumatoid arthritis. [provided by RefSeq]


[View online »](#)

**Synonyms:** chm-II; chm2

**Note:** WB application: Only overexpression results are guaranteed, not endogenous.

**Protein Families:** Druggable Genome, Secreted Protein

## Product images:

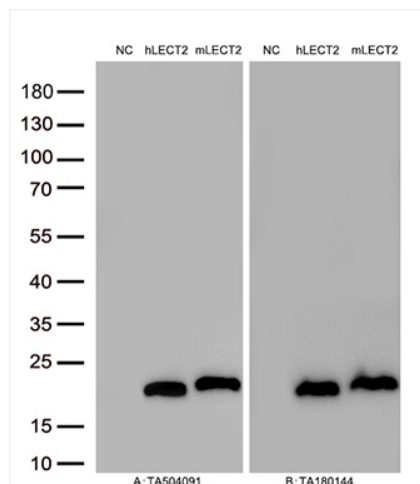
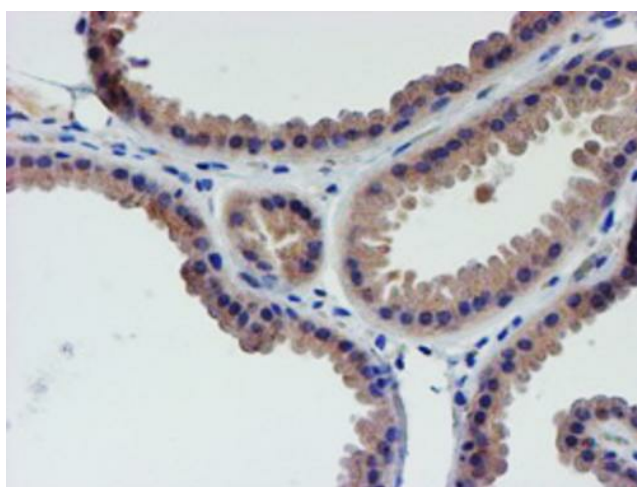
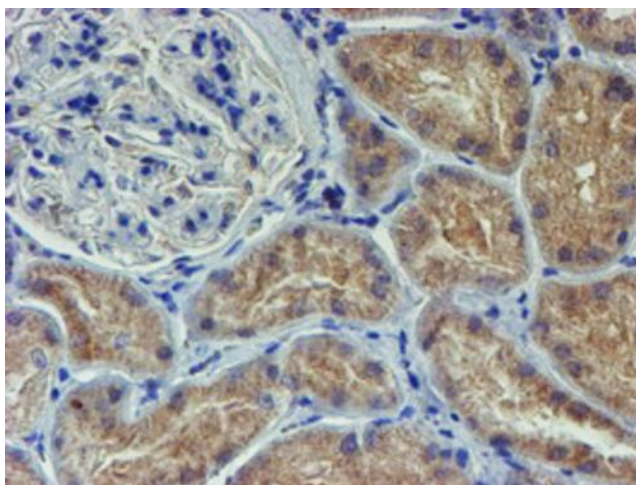


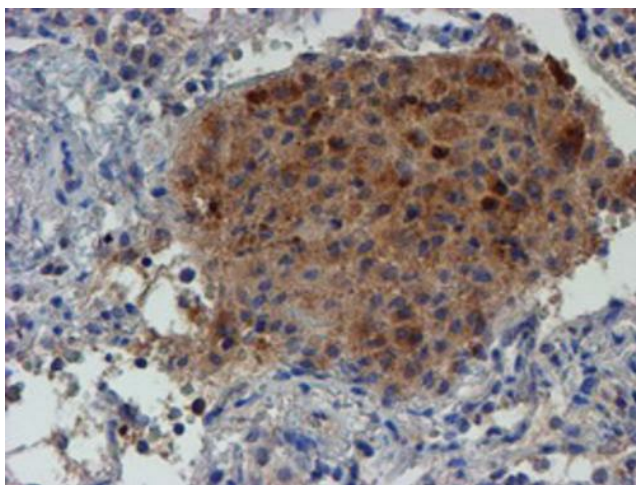
Figure A, Western blot analysis of overexpressed lysates(25ug per lane) from HEK293T cells transfected with empty plasmid ([PS100001], NC) , human LECT2 plasmid ([RC210790], hLECT2), mouse LECT2 plasmid ([MR201087], mLECT2) using anti-LECT2 antibody [TA504091] (1:500). Figure B, Western blot analysis of the same samples as figure A with anti-DDK antibody ([TA180144], 1:1000)



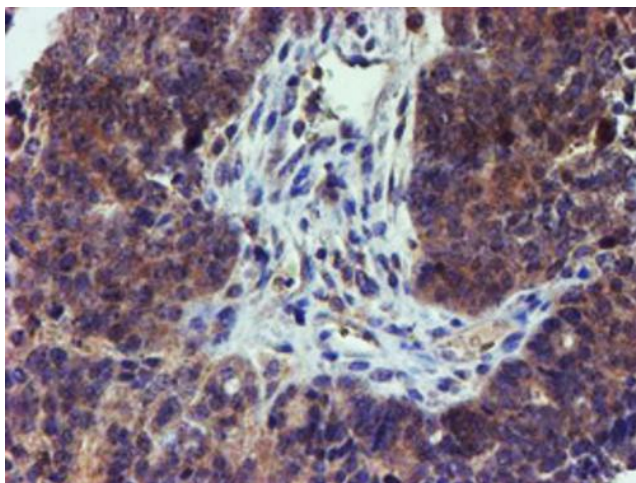
Immunohistochemical staining of paraffin-embedded Human breast tissue within the normal limits using anti-LECT2 mouse monoclonal antibody. Heat-induced epitope retrieval by EDTA solution buffer pH 8.0 at 120°C for 3 min.



Immunohistochemical staining of paraffin-embedded Human Kidney tissue within the normal limits using anti-LECT2 mouse monoclonal antibody. Heat-induced epitope retrieval by EDTA solution buffer pH 8.0 at 120°C for 3 min.

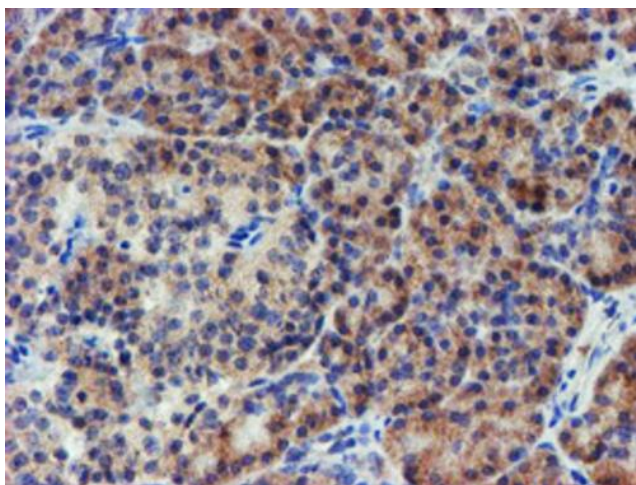


Immunohistochemical staining of paraffin-embedded Carcinoma of Human lung tissue using anti-LECT2 mouse monoclonal antibody. Heat-induced epitope retrieval by EDTA solution buffer pH 8.0 at 120°C for 3 min.

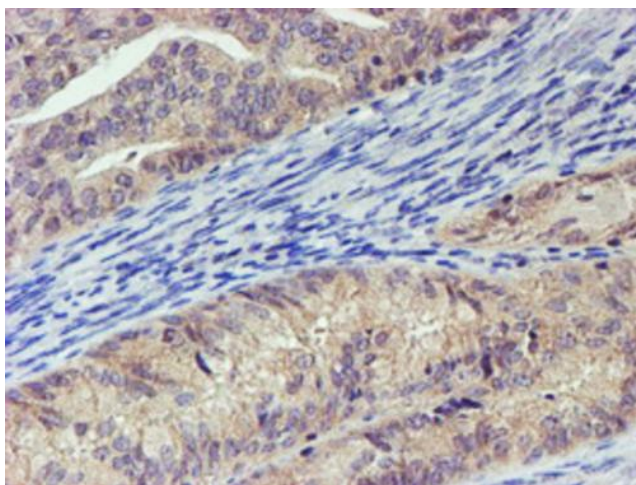


Immunohistochemical staining of paraffin-embedded Adenocarcinoma of Human ovary tissue using anti-LECT2 mouse monoclonal antibody. Heat-induced epitope retrieval by EDTA solution buffer pH 8.0 at 120°C for 3 min.

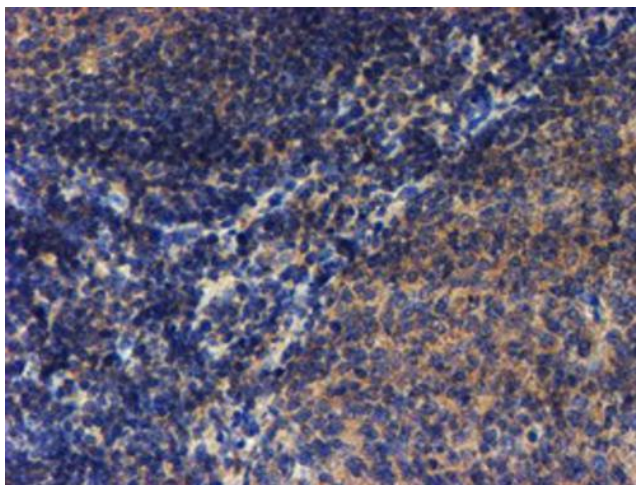




Immunohistochemical staining of paraffin-embedded Human pancreas tissue within the normal limits using anti-LECT2 mouse monoclonal antibody. Heat-induced epitope retrieval by EDTA solution buffer pH 8.0 at 120°C for 3 min.



Immunohistochemical staining of paraffin-embedded Adenocarcinoma of Human endometrium tissue using anti-LECT2 mouse monoclonal antibody. Heat-induced epitope retrieval by EDTA solution buffer pH 8.0 at 120°C for 3 min.



Immunohistochemical staining of paraffin-embedded Human tonsil within the normal limits using anti-LECT2 mouse monoclonal antibody. Heat-induced epitope retrieval by EDTA solution buffer pH 8.0 at 120°C for 3 min.