

Product datasheet for **TA504090AM**

Proteasome subunit beta type 4 (PSMB4) Mouse Monoclonal Antibody (Biotin conjugated) [Clone ID: OTI2H2]

Product data:

Product Type:	Primary Antibodies
Clone Name:	OTI2H2
Applications:	FC, WB
Recommended Dilution:	WB 1:500, FLOW 1:100
Reactivity:	Human, Mouse, Rat
Host:	Mouse
Isotype:	IgG1
Clonality:	Monoclonal
Immunogen:	Full length human recombinant protein of human PSMB4(NP_002787) produced in HEK293T cell.
Formulation:	PBS (pH 7.3) containing 1% BSA, 50% glycerol and 0.02% sodium azide.
Concentration:	0.5 mg/ml
Purification:	Purified from mouse ascites fluids or tissue culture supernatant by affinity chromatography (protein A/G)
Conjugation:	Biotin
Storage:	Store at -20°C as received.
Stability:	Stable for 12 months from date of receipt.
Predicted Protein Size:	29 kDa
Gene Name:	proteasome 20S subunit beta 4
Database Link:	NP_002787 Entrez Gene 19172 Mouse Entrez Gene 58854 Rat Entrez Gene 5692 Human P28070



[View online »](#)

Background:

The proteasome is a multicatalytic proteinase complex with a highly ordered ring-shaped 20S core structure. The core structure is composed of 4 rings of 28 non-identical subunits; 2 rings are composed of 7 alpha subunits and 2 rings are composed of 7 beta subunits. Proteasomes are distributed throughout eukaryotic cells at a high concentration and cleave peptides in an ATP/ubiquitin-dependent process in a non-lysosomal pathway. An essential function of a modified proteasome, the immunoproteasome, is the processing of class I MHC peptides. This gene encodes a member of the proteasome B-type family, also known as the T1B family, that is a 20S core beta subunit. [provided by RefSeq, Jul

Synonyms:

HN3; HsN3; PROS-26; PROS26

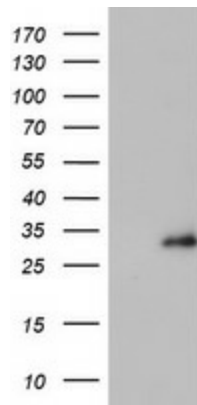
Protein Families:

Druggable Genome, Protease

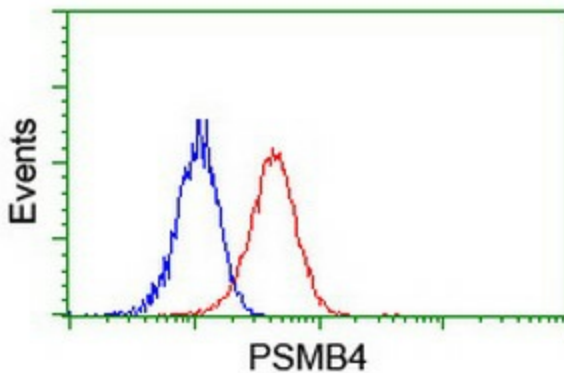
Protein Pathways:

Proteasome

Product images:



HEK293T cells were transfected with the pCMV6-ENTRY control (Left lane) or pCMV6-ENTRY PSMB4 ([RC205723], Right lane) cDNA for 48 hrs and lysed. Equivalent amounts of cell lysates (5 ug per lane) were separated by SDS-PAGE and immunoblotted with anti-PSMB4. Positive lysates [LY419106] (100ug) and [LC419106] (20ug) can be purchased separately from OriGene.



Flow cytometric Analysis of Jurkat cells, using anti-PSMB4 antibody ([TA504090]), (Red), compared to a nonspecific negative control antibody, (Blue).