

## Product datasheet for **TA504088M**

### HES1 Mouse Monoclonal Antibody [Clone ID: OTI2H4]

#### Product data:

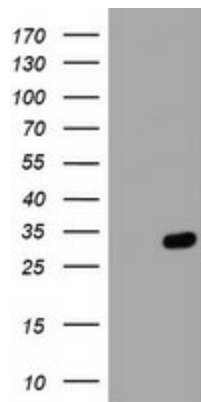
Product Type:	Primary Antibodies
Clone Name:	OTI2H4
Applications:	WB
Recommended Dilution:	WB 1:2000
Reactivity:	Human, Mouse, Rat
Host:	Mouse
Isotype:	IgG1
Clonality:	Monoclonal
Immunogen:	Full length huamn recombinant protein of human HES1(NP_005515) produced in HEK293T cell.
Formulation:	PBS (pH 7.3) containing 1% BSA, 50% glycerol and 0.02% sodium azide.
Concentration:	0.71 mg/ml
Purification:	Purified from mouse ascites fluids or tissue culture supernatant by affinity chromatography (protein A/G)
Conjugation:	Unconjugated
Storage:	Store at -20°C as received.
Stability:	Stable for 12 months from date of receipt.
Predicted Protein Size:	29.4 kDa
Gene Name:	hes family bHLH transcription factor 1
Database Link:	<a href="#">NP_005515</a> <a href="#">Entrez Gene 15205 Mouse</a> <a href="#">Entrez Gene 29577 Rat</a> <a href="#">Entrez Gene 3280 Human</a> <a href="#">Q14469</a>
Background:	This protein belongs to the basic helix-loop-helix family of transcription factors. It is a transcriptional repressor of genes that require a bHLH protein for their transcription. The protein has a particular type of basic domain that contains a helix interrupting protein that binds to the N-box rather than the canonical E-box. [provided by RefSeq]
Synonyms:	bHLHb39; HES-1; HHL; HRY


[View online »](#)

**Protein Families:** Adult stem cells, Cancer stem cells, Druggable Genome, ES Cell Differentiation/IPS, Stem cell relevant signaling - DSL/Notch pathway, Transcription Factors

**Protein Pathways:** Maturity onset diabetes of the young, Notch signaling pathway

**Product images:**



HEK293T cells were transfected with the pCMV6-ENTRY control (Left lane) or pCMV6-ENTRY HES1 ([RC211709], Right lane) cDNA for 48 hrs and lysed. Equivalent amounts of cell lysates (5 ug per lane) were separated by SDS-PAGE and immunoblotted with anti-HES1. Positive lysates [LY417251] (100ug) and [LC417251] (20ug) can be purchased separately from OriGene.