

## Product datasheet for **TA504067AM**

### **HES1 Mouse Monoclonal Antibody (Biotin conjugated) [Clone ID: OTI1B9]**

#### **Product data:**

<b>Product Type:</b>	Primary Antibodies
<b>Clone Name:</b>	OTI1B9
<b>Applications:</b>	WB
<b>Recommended Dilution:</b>	WB 1:500
<b>Reactivity:</b>	Human, Mouse, Rat
<b>Host:</b>	Mouse
<b>Isotype:</b>	IgG1
<b>Clonality:</b>	Monoclonal
<b>Immunogen:</b>	Full length human recombinant protein of human HES1(NP_005515) produced in HEK293T cell.
<b>Formulation:</b>	PBS (pH 7.3) containing 1% BSA, 50% glycerol and 0.02% sodium azide.
<b>Concentration:</b>	0.5 mg/ml
<b>Purification:</b>	Purified from mouse ascites fluids or tissue culture supernatant by affinity chromatography (protein A/G)
<b>Conjugation:</b>	Biotin
<b>Storage:</b>	Store at -20°C as received.
<b>Stability:</b>	Stable for 12 months from date of receipt.
<b>Predicted Protein Size:</b>	29.4 kDa
<b>Gene Name:</b>	hes family bHLH transcription factor 1
<b>Database Link:</b>	<a href="#">NP_005515</a> <a href="#">Entrez Gene 15205 Mouse</a> <a href="#">Entrez Gene 29577 Rat</a> <a href="#">Entrez Gene 3280 Human</a> <a href="#">Q14469</a>
<b>Background:</b>	This protein belongs to the basic helix-loop-helix family of transcription factors. It is a transcriptional repressor of genes that require a bHLH protein for their transcription. The protein has a particular type of basic domain that contains a helix interrupting protein that binds to the N-box rather than the canonical E-box. [provided by RefSeq]
<b>Synonyms:</b>	bHLHb39; HES-1; HHL; HRY

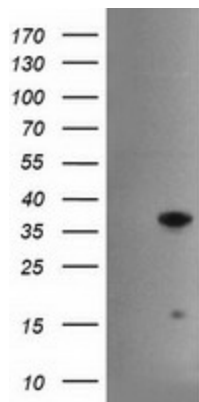


[View online »](#)

**Protein Families:** Adult stem cells, Cancer stem cells, Druggable Genome, ES Cell Differentiation/IPS, Stem cell relevant signaling - DSL/Notch pathway, Transcription Factors

**Protein Pathways:** Maturity onset diabetes of the young, Notch signaling pathway

**Product images:**



HEK293T cells were transfected with the pCMV6-ENTRY control (Left lane) or pCMV6-ENTRY HES1 ([RC211709], Right lane) cDNA for 48 hrs and lysed. Equivalent amounts of cell lysates (5 ug per lane) were separated by SDS-PAGE and immunoblotted with anti-HES1. Positive lysates [LY417251] (100ug) and [LC417251] (20ug) can be purchased separately from OriGene.