

Product datasheet for **TA504039S**

DPP9 Mouse Monoclonal Antibody [Clone ID: OTI6A12]

Product data:

Product Type:	Primary Antibodies
Clone Name:	OTI6A12
Applications:	FC, IHC, WB
Recommended Dilution:	WB 1:500~2000, IHC 1:150, FLOW 1:100
Reactivity:	Human, Dog, Mouse, Rat
Host:	Mouse
Isotype:	IgG2a
Clonality:	Monoclonal
Immunogen:	Full length human recombinant protein of human DPP9(NP_631898) produced in HEK293T cell.
Formulation:	PBS (pH 7.3) containing 1% BSA, 50% glycerol and 0.02% sodium azide.
Concentration:	0.86 mg/ml
Purification:	Purified from mouse ascites fluids or tissue culture supernatant by affinity chromatography (protein A/G)
Conjugation:	Unconjugated
Storage:	Store at -20°C as received.
Stability:	Stable for 12 months from date of receipt.
Predicted Protein Size:	96.4 kDa
Gene Name:	dipeptidyl peptidase 9
Database Link:	NP_631898 Entrez Gene 224897 Mouse Entrez Gene 485033 Dog Entrez Gene 301130 Rat Entrez Gene 91039 Human Q86TI2



[View online »](#)

Background:

This gene encodes a protein that is a member of the S9B family in clan SC of the serine proteases. The protein has been shown to have post-proline dipeptidyl aminopeptidase activity, cleaving Xaa-Pro dipeptides from the N-termini of proteins. Although the activity of this protein is similar to that of dipeptidyl peptidase 4 (DPP4), it does not appear to be membrane bound. In general, dipeptidyl peptidases appear to be involved in the regulation of the activity of their substrates and have been linked to a variety of diseases including type 2 diabetes, obesity and cancer. Several transcript variants of this gene have been described but not fully characterized. [provided by RefSeq]

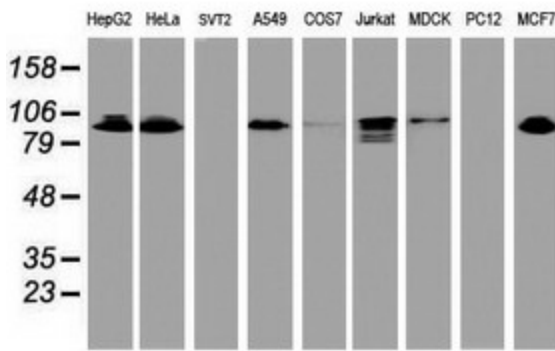
Synonyms:

DP9; DPLP9; DPRP-2; DPRP2

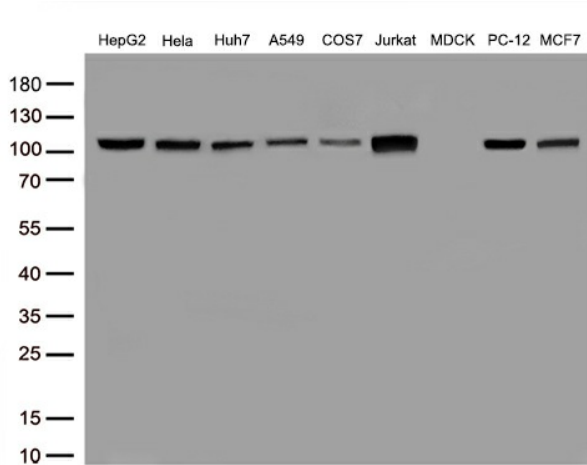
Protein Families:

Druggable Genome, Protease

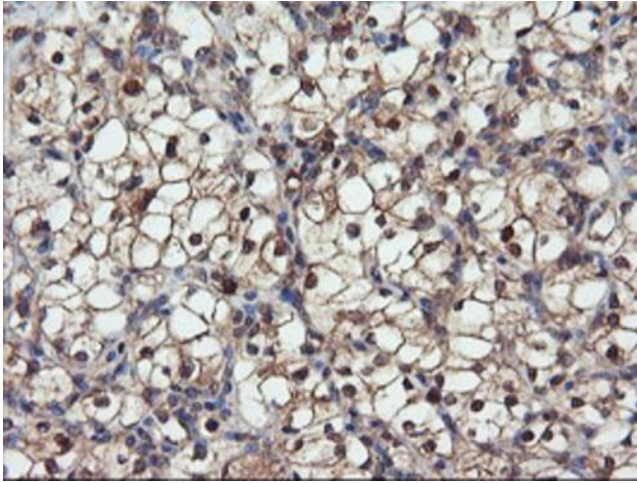
Product images:



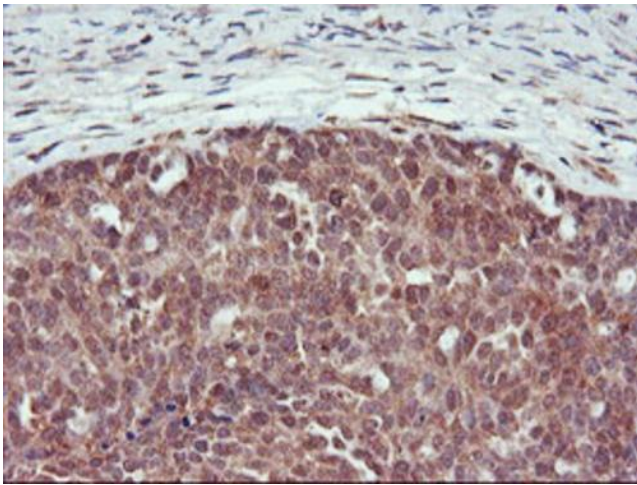
Western blot analysis of extracts (35ug) from 9 different cell lines by using anti-DPP9 monoclonal antibody.



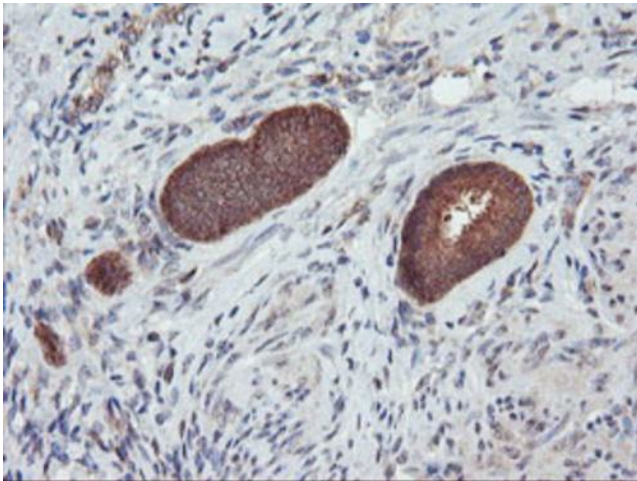
Western blot analysis of extracts (50ug per lane) from 9 cell lines lysates by using anti-DPP9 monoclonal antibody([TA504039], 1:500)



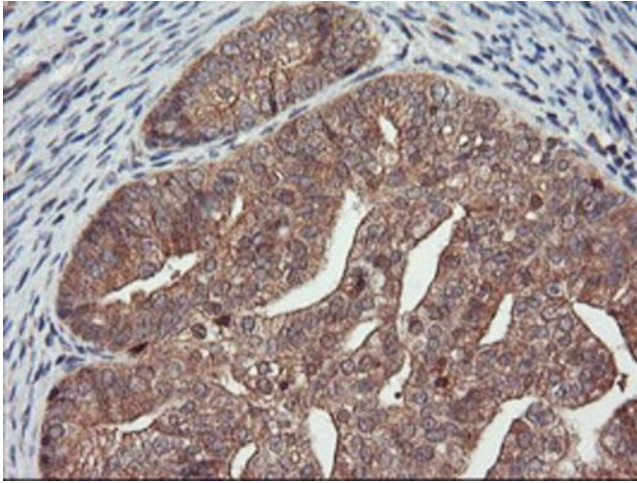
Immunohistochemical staining of paraffin-embedded Carcinoma of Human kidney tissue using anti-DPP9 mouse monoclonal antibody. (Heat-induced epitope retrieval by 10mM citric buffer, pH6.0, 100°C for 10min, [TA504039])



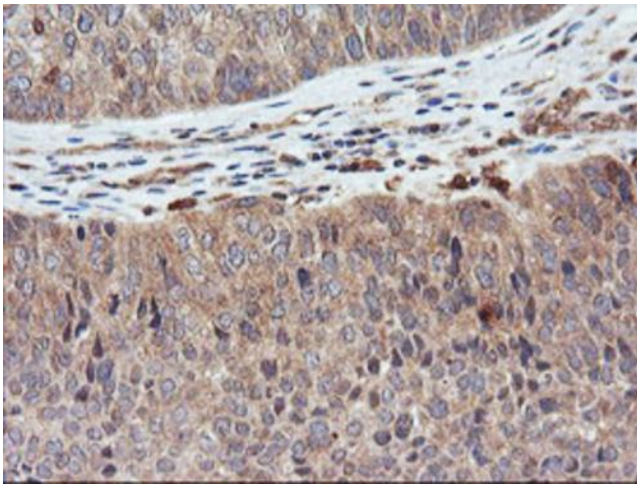
Immunohistochemical staining of paraffin-embedded Adenocarcinoma of Human ovary tissue using anti-DPP9 mouse monoclonal antibody. (Heat-induced epitope retrieval by 10mM citric buffer, pH6.0, 100°C for 10min, [TA504039])



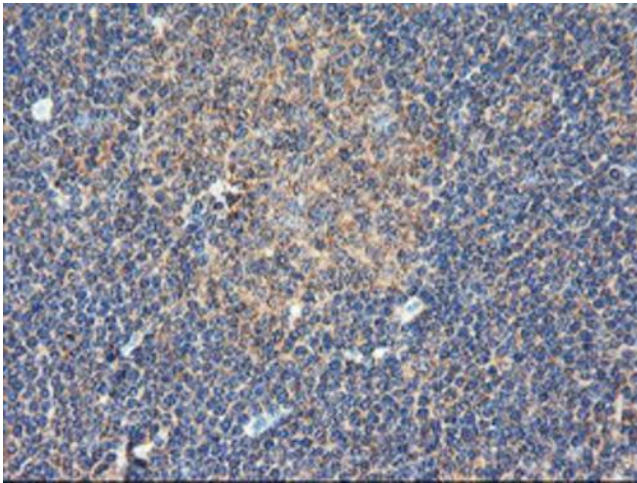
Immunohistochemical staining of paraffin-embedded Human endometrium tissue within the normal limits using anti-DPP9 mouse monoclonal antibody. (Heat-induced epitope retrieval by 10mM citric buffer, pH6.0, 100°C for 10min, [TA504039])



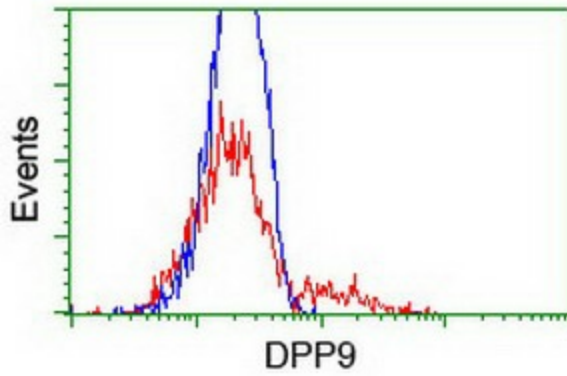
Immunohistochemical staining of paraffin-embedded Adenocarcinoma of Human endometrium tissue using anti-DPP9 mouse monoclonal antibody. (Heat-induced epitope retrieval by 10mM citric buffer, pH6.0, 100°C for 10min, [TA504039])



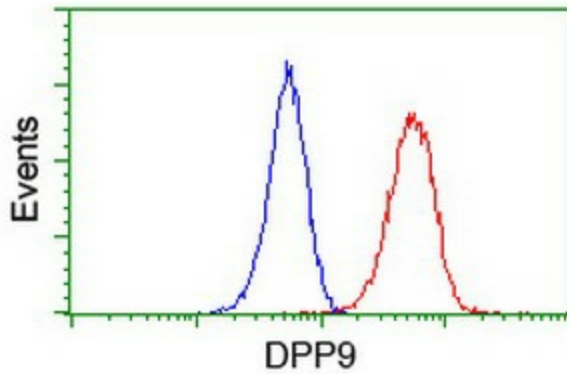
Immunohistochemical staining of paraffin-embedded Carcinoma of Human bladder tissue using anti-DPP9 mouse monoclonal antibody. (Heat-induced epitope retrieval by 10mM citric buffer, pH6.0, 100°C for 10min, [TA504039])



Immunohistochemical staining of paraffin-embedded Human tonsil within the normal limits using anti-DPP9 mouse monoclonal antibody. (Heat-induced epitope retrieval by 10mM citric buffer, pH6.0, 100°C for 10min, [TA504039])



HEK293T cells transfected with either [RC224465] overexpress plasmid (Red) or empty vector control plasmid (Blue) were immunostained by anti-DPP9 antibody ([TA504039]), and then analyzed by flow cytometry.



Flow cytometric Analysis of Jurkat cells, using anti-DPP9 antibody ([TA504039]), (Red), compared to a nonspecific negative control antibody, (Blue).