

Product datasheet for **TA504025**

FBXO21 Mouse Monoclonal Antibody [Clone ID: OTI5H4]

Product data:

Product Type:	Primary Antibodies
Clone Name:	OTI5H4
Applications:	FC, IF, IHC, WB
Recommended Dilution:	WB 1:500~2000, IHC 1:150, IF 1:100, FLOW 1:100
Reactivity:	Human, Monkey, Mouse, Rat
Host:	Mouse
Isotype:	IgG1
Clonality:	Monoclonal
Immunogen:	Full length human recombinant protein of human FBXO21(NP_296373) produced in HEK293T cell.
Formulation:	PBS (PH 7.3) containing 1% BSA, 50% glycerol and 0.02% sodium azide.
Concentration:	0.54 mg/ml
Purification:	Purified from mouse ascites fluids or tissue culture supernatant by affinity chromatography (protein A/G)
Conjugation:	Unconjugated
Storage:	Store at -20°C as received.
Stability:	Stable for 12 months from date of receipt.
Predicted Protein Size:	72.1 kDa
Gene Name:	F-box protein 21
Database Link:	NP_296373 Entrez Gene 231670 MouseEntrez Gene 360818 RatEntrez Gene 693647 MonkeyEntrez Gene 23014 Human O94952



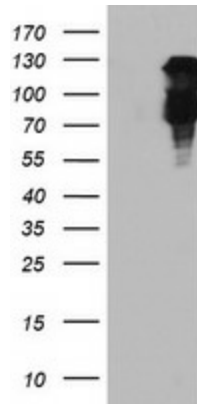
[View online »](#)

Background:

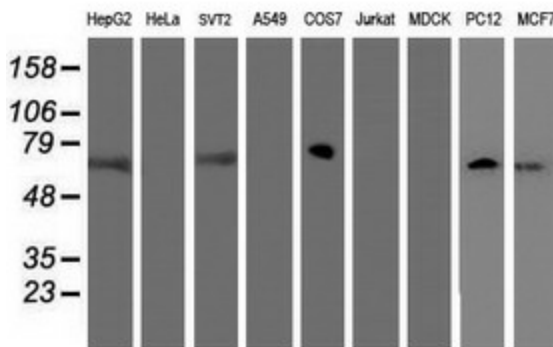
This gene encodes a member of the F-box protein family which is characterized by an approximately 40 amino acid motif, the F-box. The F-box proteins constitute one of the four subunits of ubiquitin protein ligase complex called SCFs (SKP1-cullin-F-box), which function in phosphorylation-dependent ubiquitination. The F-box proteins are divided into 3 classes: Fbws containing WD-40 domains, Fbls containing leucine-rich repeats, and Fbxs containing either different protein-protein interaction modules or no recognizable motifs. The protein encoded by this gene belongs to the Fbxs class. Alternative splicing of this gene generates 2 transcript variants. [provided by RefSeq]

Synonyms:

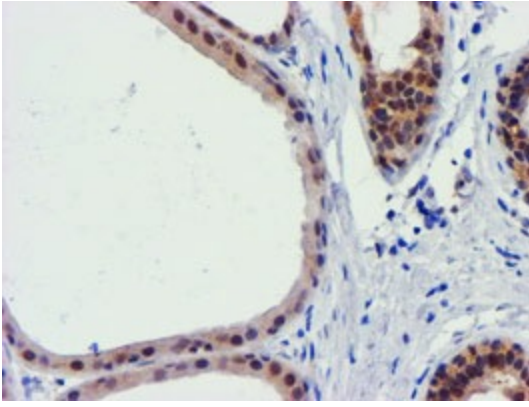
FBX21

Product images:


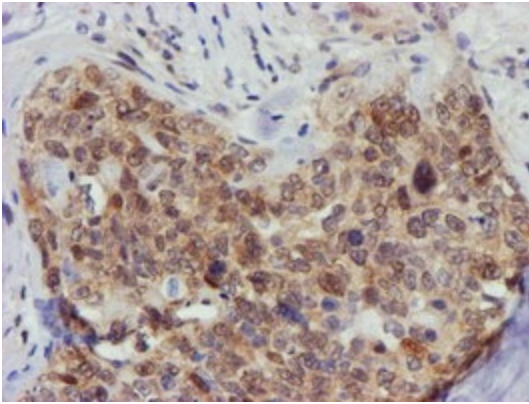
HEK293T cells were transfected with the pCMV6-ENTRY control (Cat# [PS100001], Left lane) or pCMV6-ENTRY FBXO21 (Cat# [RC223095], Right lane) cDNA for 48 hrs and lysed. Equivalent amounts of cell lysates (5 ug per lane) were separated by SDS-PAGE and immunoblotted with anti-FBXO21(Cat# TA504025).



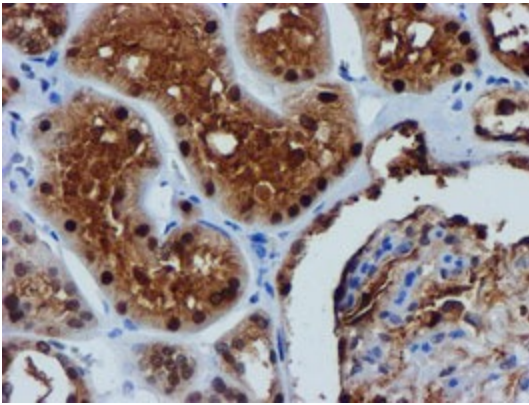
Western blot analysis of extracts (35ug) from 9 different cell lines by using anti-FBXO21 monoclonal antibody.



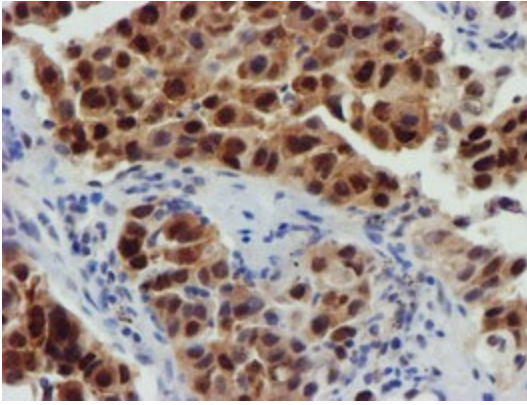
Immunohistochemical staining of paraffin-embedded Human breast tissue within the normal limits using anti-FBXO21 mouse monoclonal antibody. (Heat-induced epitope retrieval by 10mM citric buffer, pH6.0, 100°C for 10min, TA504025)



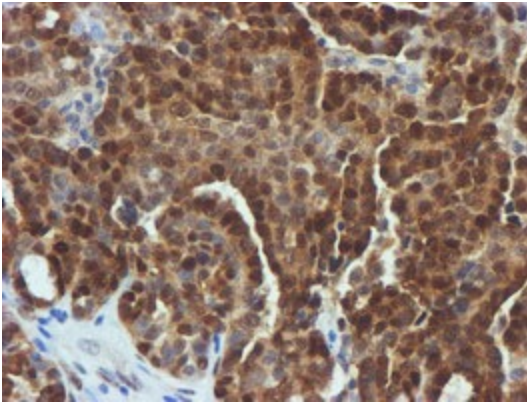
Immunohistochemical staining of paraffin-embedded Adenocarcinoma of Human breast tissue using anti-FBXO21 mouse monoclonal antibody. (Heat-induced epitope retrieval by 10mM citric buffer, pH6.0, 100°C for 10min, TA504025)



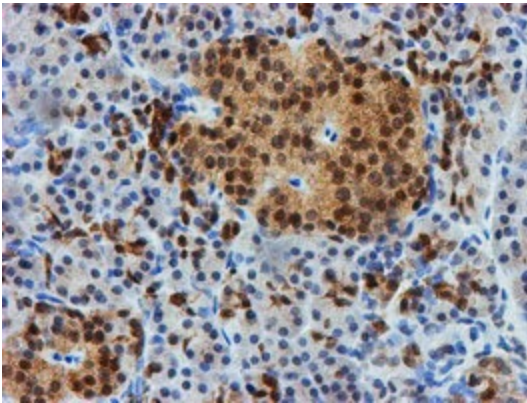
Immunohistochemical staining of paraffin-embedded Human Kidney tissue within the normal limits using anti-FBXO21 mouse monoclonal antibody. (Heat-induced epitope retrieval by 10mM citric buffer, pH6.0, 100°C for 10min, TA504025)



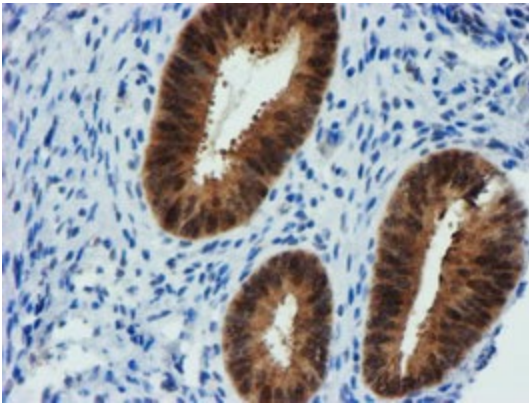
Immunohistochemical staining of paraffin-embedded Carcinoma of Human lung tissue using anti-FBXO21 mouse monoclonal antibody. (Heat-induced epitope retrieval by 10mM citric buffer, pH6.0, 100°C for 10min, TA504025)



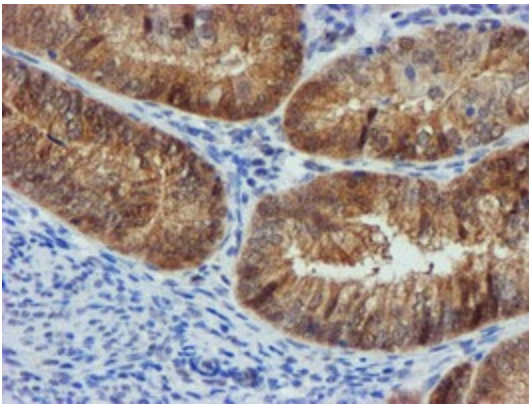
Immunohistochemical staining of paraffin-embedded Adenocarcinoma of Human ovary tissue using anti-FBXO21 mouse monoclonal antibody. (Heat-induced epitope retrieval by 10mM citric buffer, pH6.0, 100°C for 10min, TA504025)



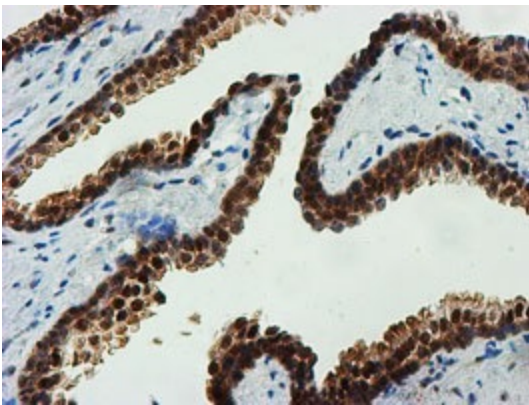
Immunohistochemical staining of paraffin-embedded Human pancreas tissue within the normal limits using anti-FBXO21 mouse monoclonal antibody. (Heat-induced epitope retrieval by 10mM citric buffer, pH6.0, 100°C for 10min, TA504025)



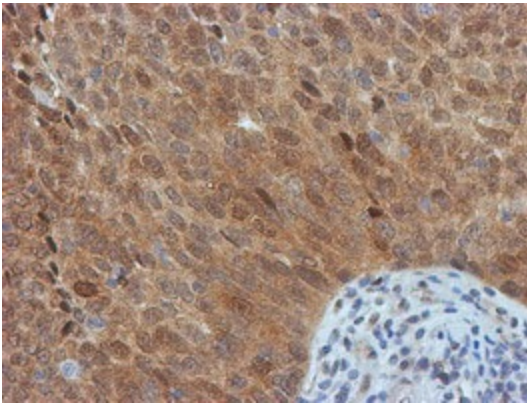
Immunohistochemical staining of paraffin-embedded Human endometrium tissue within the normal limits using anti-FBXO21 mouse monoclonal antibody. (Heat-induced epitope retrieval by 10mM citric buffer, pH6.0, 100°C for 10min, TA504025)



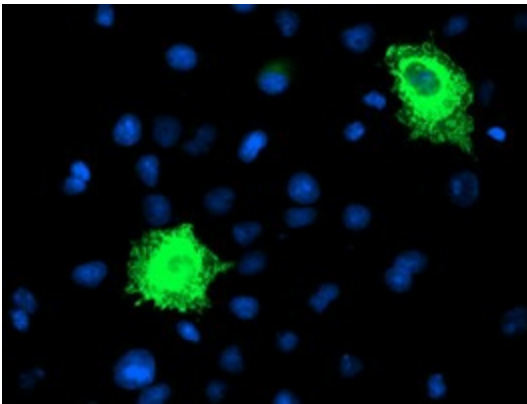
Immunohistochemical staining of paraffin-embedded Adenocarcinoma of Human endometrium tissue using anti-FBXO21 mouse monoclonal antibody. (Heat-induced epitope retrieval by 10mM citric buffer, pH6.0, 100°C for 10min, TA504025)



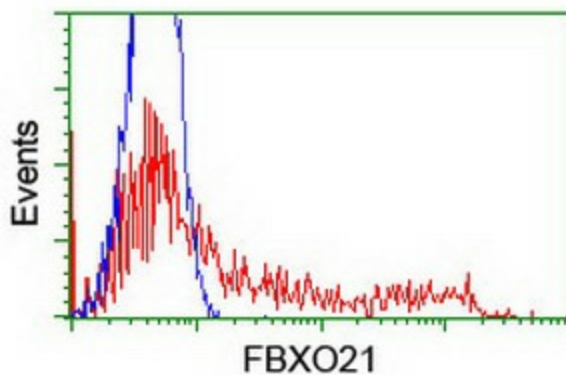
Immunohistochemical staining of paraffin-embedded Human prostate tissue within the normal limits using anti-FBXO21 mouse monoclonal antibody. (Heat-induced epitope retrieval by 10mM citric buffer, pH6.0, 100°C for 10min, TA504025)



Immunohistochemical staining of paraffin-embedded Carcinoma of Human bladder tissue using anti-FBXO21 mouse monoclonal antibody. (Heat-induced epitope retrieval by 10mM citric buffer, pH6.0, 100°C for 10min, TA504025)



Anti-FBXO21 mouse monoclonal antibody (TA504025) immunofluorescent staining of COS7 cells transiently transfected by pCMV6-ENTRY FBXO21 ([RC223095]).



HEK293T cells transfected with either [RC223095] overexpress plasmid (Red) or empty vector control plasmid (Blue) were immunostained by anti-FBXO21 antibody (TA504025), and then analyzed by flow cytometry.