

## Product datasheet for **TA504023BM**

### PSMA4 Mouse Monoclonal Antibody (HRP conjugated) [Clone ID: OTI1H10]

#### Product data:

|                         |   |
|-------------------------|---|
| Product Type:           | Primary Antibodies  |
| Clone Name:             | OTI1H10   |
| Applications:           | IHC, WB   |
| Recommended Dilution:   | WB 1:500~2000, IHC 1:150  |
| Reactivity:             | Human, Dog, Rat, Monkey, Mouse  |
| Host:                   | Mouse   |
| Isotype:                | IgG1  |
| Clonality:              | Monoclonal  |
| Immunogen:              | Full length human recombinant protein of human PSMA4(NP_002780) produced in HEK293T cell.   |
| Formulation:            | PBS (pH 7.3) containing 1% BSA, 50% glycerol.   |
| Concentration:          | 0.5 mg/ml   |
| Purification:           | Purified from mouse ascites fluids or tissue culture supernatant by affinity chromatography (protein A/G)   |
| Conjugation:            | HRP   |
| Storage:                | Store at -20°C as received.   |
| Stability:              | Stable for 12 months from date of receipt.  |
| Predicted Protein Size: | 29.3 kDa  |
| Gene Name:              | proteasome 20S subunit alpha 4  |
| Database Link:          | <a href="#">NP_002780</a><br><a href="#">Entrez Gene 26441 Mouse</a> <a href="#">Entrez Gene 29671 Rat</a> <a href="#">Entrez Gene 100687556 Dog</a> <a href="#">Entrez Gene 710417 Monkey</a> <a href="#">Entrez Gene 5685 Human</a><br><a href="#">P25789</a> |



[View online »](#)

**Background:**

The proteasome is a multicatalytic proteinase complex with a highly ordered ring-shaped 20S core structure. The core structure is composed of 4 rings of 28 non-identical subunits; 2 rings are composed of 7 alpha subunits and 2 rings are composed of 7 beta subunits. Proteasomes are distributed throughout eukaryotic cells at a high concentration and cleave peptides in an ATP/ubiquitin-dependent process in a non-lysosomal pathway. An essential function of a modified proteasome, the immunoproteasome, is the processing of class I MHC peptides. This gene encodes a member of the peptidase T1A family, that is a 20S core alpha subunit. Three alternatively spliced transcript variants encoding different isoforms have been found for this gene. [provided by RefSeq]

**Synonyms:**

HC9; HsT17706; PSC9

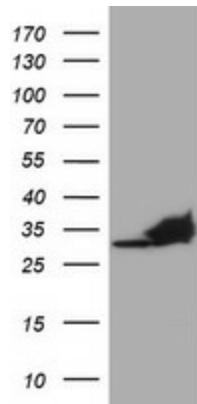
**Protein Families:**

Druggable Genome, Protease

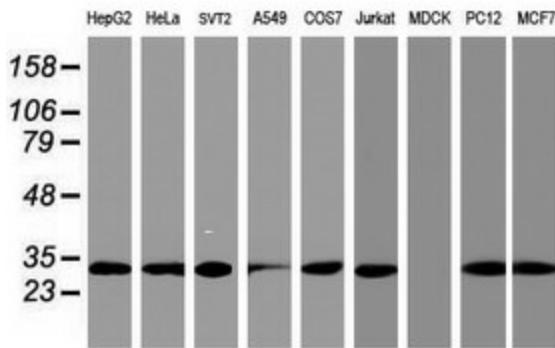
**Protein Pathways:**

Proteasome

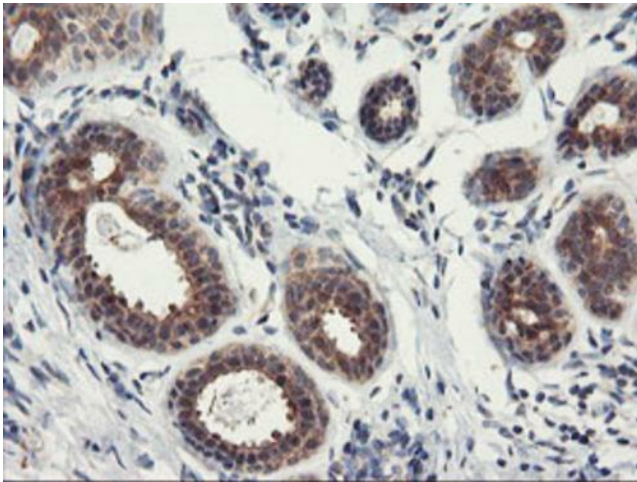
**Product images:**



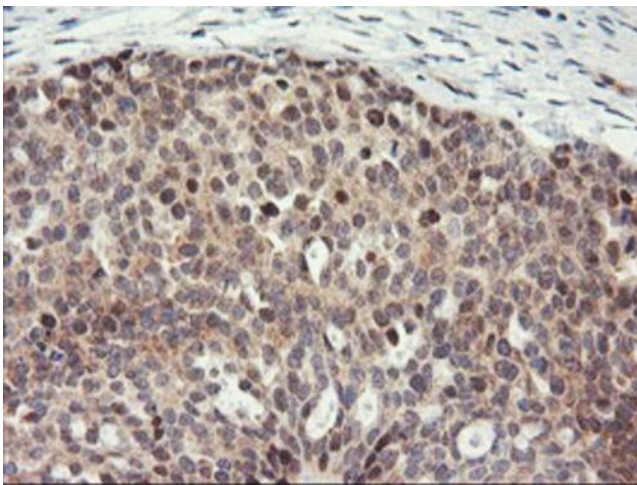
HEK293T cells were transfected with the pCMV6-ENTRY control (Left lane) or pCMV6-ENTRY PSMA4 ([RC202786], Right lane) cDNA for 48 hrs and lysed. Equivalent amounts of cell lysates (5 ug per lane) were separated by SDS-PAGE and immunoblotted with anti-PSMA4. Positive lysates [LY419117] (100ug) and [LC419117] (20ug) can be purchased separately from OriGene.



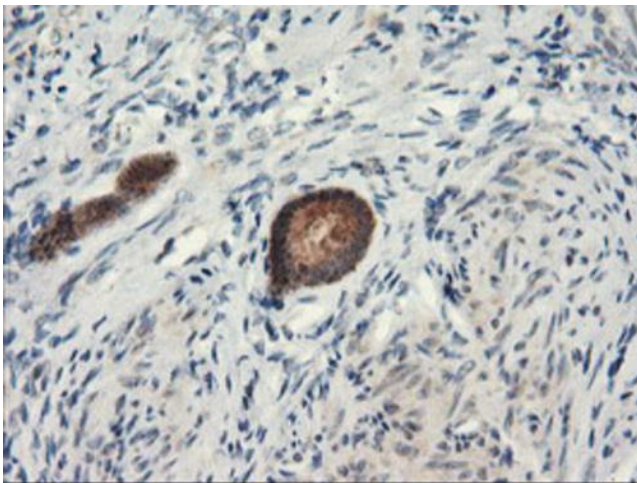
Western blot analysis of extracts (35ug) from 9 different cell lines by using anti-PSMA4 monoclonal antibody.



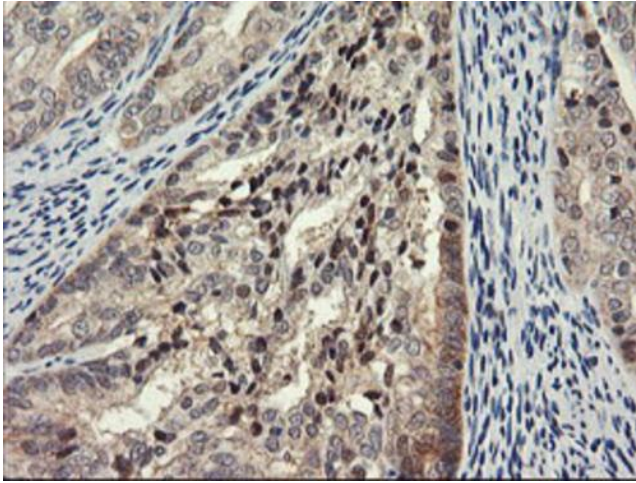
Immunohistochemical staining of paraffin-embedded Human breast tissue within the normal limits using anti-PSMA4 mouse monoclonal antibody. (Heat-induced epitope retrieval by 10mM citric buffer, pH6.0, 100°C for 10min, [TA504023])



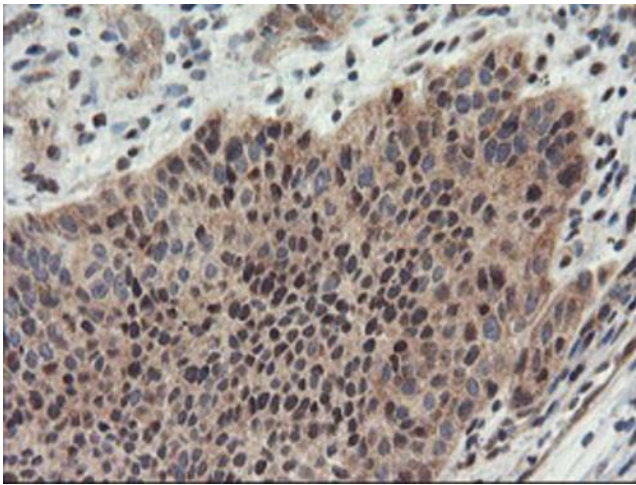
Immunohistochemical staining of paraffin-embedded Adenocarcinoma of Human ovary tissue using anti-PSMA4 mouse monoclonal antibody. (Heat-induced epitope retrieval by 10mM citric buffer, pH6.0, 100°C for 10min, [TA504023])



Immunohistochemical staining of paraffin-embedded Human endometrium tissue within the normal limits using anti-PSMA4 mouse monoclonal antibody. (Heat-induced epitope retrieval by 10mM citric buffer, pH6.0, 100°C for 10min, [TA504023])



Immunohistochemical staining of paraffin-embedded Adenocarcinoma of Human endometrium tissue using anti-PSMA4 mouse monoclonal antibody. (Heat-induced epitope retrieval by 10mM citric buffer, pH6.0, 100°C for 10min, [TA504023])



Immunohistochemical staining of paraffin-embedded Carcinoma of Human bladder tissue using anti-PSMA4 mouse monoclonal antibody. (Heat-induced epitope retrieval by 10mM citric buffer, pH6.0, 100°C for 10min, [TA504023])