

Product datasheet for **TA504022BM**

OBFC2B (NABP2) Mouse Monoclonal Antibody (HRP conjugated) [Clone ID: OTI1E11]

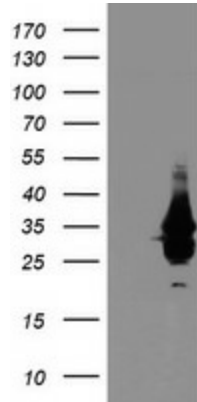
Product data:

| | |
|-------------------------|--|
| Product Type: | Primary Antibodies |
| Clone Name: | OTI1E11 |
| Applications: | FC, IHC, WB |
| Recommended Dilution: | WB 1:500~2000, IHC 1:150, FLOW 1:100 |
| Reactivity: | Human, Mouse, Rat |
| Host: | Mouse |
| Isotype: | IgG1 |
| Clonality: | Monoclonal |
| Immunogen: | Full length human recombinant protein of human OBFC2B(NP_076973) produced in HEK293T cell. |
| Formulation: | PBS (pH 7.3) containing 1% BSA, 50% glycerol. |
| Concentration: | 0.5 mg/ml |
| Purification: | Purified from mouse ascites fluids or tissue culture supernatant by affinity chromatography (protein A/G) |
| Conjugation: | HRP |
| Storage: | Store at -20°C as received. |
| Stability: | Stable for 12 months from date of receipt. |
| Predicted Protein Size: | 22.2 kDa |
| Gene Name: | nucleic acid binding protein 2 |
| Database Link: | NP_076973 Entrez Gene 79035 Human Q9BQ15 |
| Background: | Single-stranded DNA (ssDNA)-binding proteins, such as OBFC2B, are ubiquitous and essential for a variety of DNA metabolic processes, including replication, recombination, and detection and repair of damage (Richard et al., 2008 [PubMed 18449195]). [supplied by OMIM]. COMPLETENESS: complete on the 3' end. |
| Synonyms: | hSSB1; OBFC2B; SOSS-B1; SSB1 |

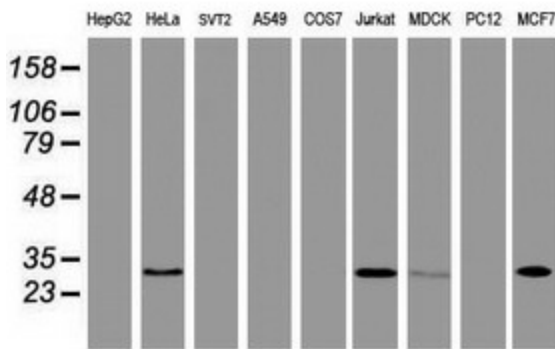


[View online »](#)

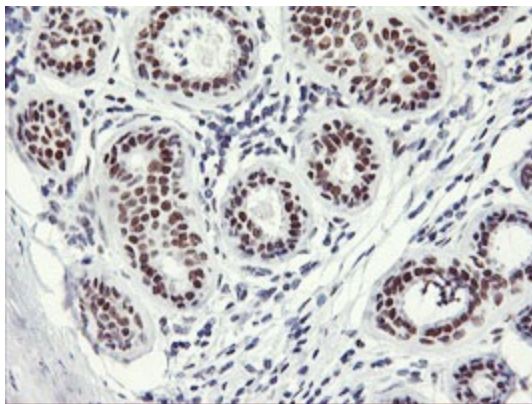
Product images:



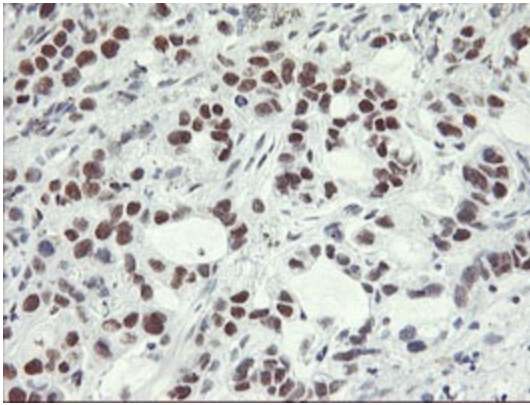
HEK293T cells were transfected with the pCMV6-ENTRY control (Cat# [PS100001], Left lane) or pCMV6-ENTRY OBFC2B (Cat# [RC200876], Right lane) cDNA for 48 hrs and lysed. Equivalent amounts of cell lysates (5 ug per lane) were separated by SDS-PAGE and immunoblotted with anti-OBFC2B (Cat# [TA504022]). Positive lysates [LY411384] (100ug) and [LC411384] (20ug) can be purchased separately from OriGene.



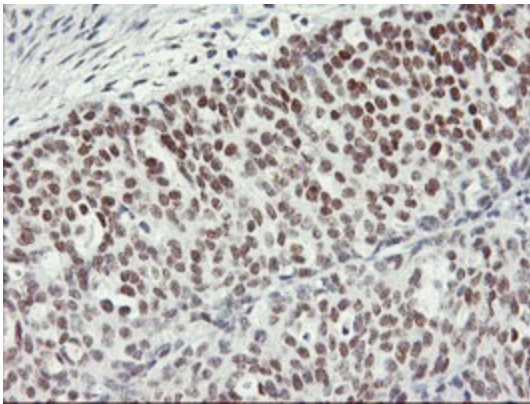
Western blot analysis of extracts (35ug) from 9 different cell lines by using anti-OBFC2B monoclonal antibody.



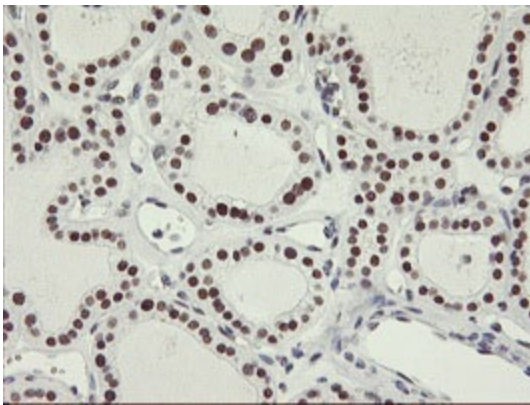
Immunohistochemical staining of paraffin-embedded Human breast tissue within the normal limits using anti-OBFC2B mouse monoclonal antibody. (Heat-induced epitope retrieval by 10mM citric buffer, pH6.0, 100°C for 10min, [TA504022])



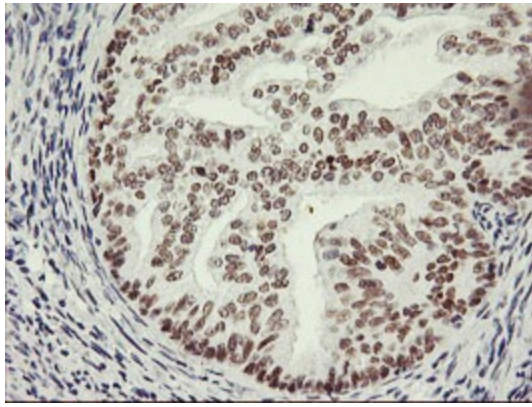
Immunohistochemical staining of paraffin-embedded Carcinoma of Human lung tissue using anti-OBFC2B mouse monoclonal antibody. (Heat-induced epitope retrieval by 10mM citric buffer, pH6.0, 100°C for 10min, [TA504022])



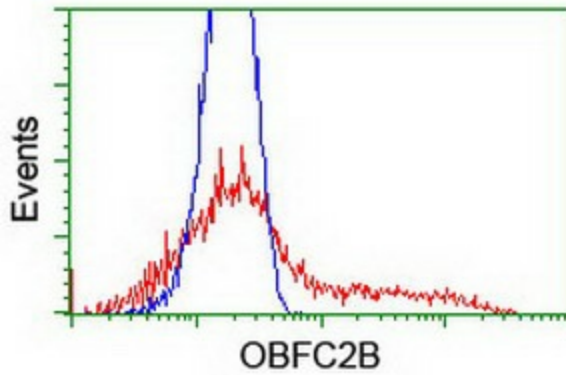
Immunohistochemical staining of paraffin-embedded Adenocarcinoma of Human ovary tissue using anti-OBFC2B mouse monoclonal antibody. (Heat-induced epitope retrieval by 10mM citric buffer, pH6.0, 100°C for 10min, [TA504022])



Immunohistochemical staining of paraffin-embedded Carcinoma of Human thyroid tissue using anti-OBFC2B mouse monoclonal antibody. (Heat-induced epitope retrieval by 10mM citric buffer, pH6.0, 100°C for 10min, [TA504022])



Immunohistochemical staining of paraffin-embedded Adenocarcinoma of Human endometrium tissue using anti-OBFC2B mouse monoclonal antibody. (Heat-induced epitope retrieval by 10mM citric buffer, pH6.0, 100°C for 10min, [TA504022])



HEK293T cells transfected with either [RC200876] overexpress plasmid (Red) or empty vector control plasmid (Blue) were immunostained by anti-OBFC2B antibody ([TA504022]), and then analyzed by flow cytometry.